

Through Glass Via Solutions

Applications

- Radio Frequency Front End (RFFE)
- Filters
- Antennas
- Switches in mobile phones
- Medical equipment
- MEMS-based devices
- Interposers and semiconductor packaging substrates

Benefits

- Ability to lower electronic loss particularly at high frequency levels
- Capability to deliver glass as thin as 100µm
- Superior surface quality enables fine-line spacing

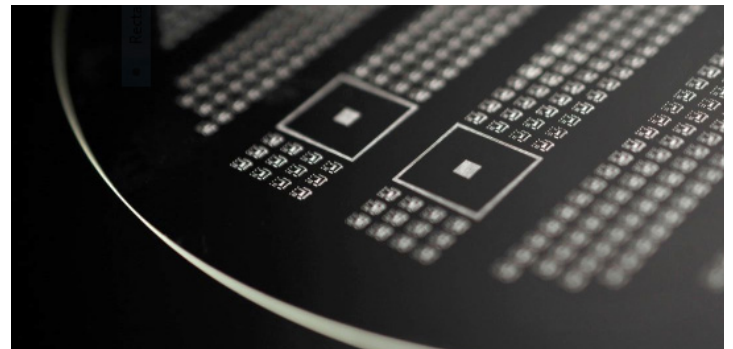
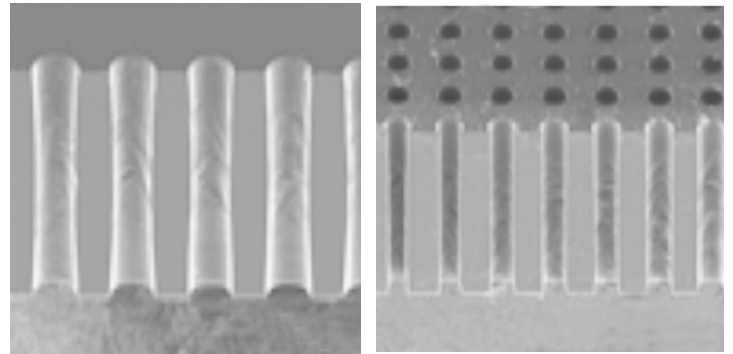
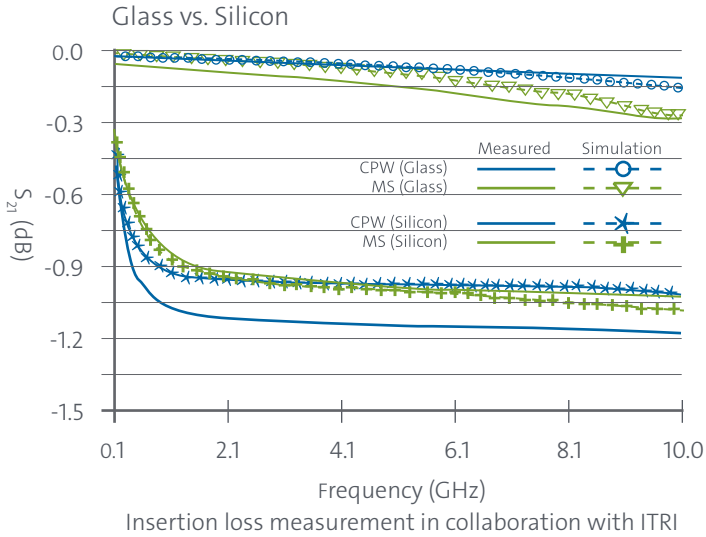
Precision Vias

| | |
|---------------------|---|
| Wafer Size | 100/150/200/300mm 100µm – 500µm in thickness |
| Panel Size | Up to 500mm x 500mm |
| Positional Accuracy | <+/- 10µm |
| Pitch | Minimum 2X via diameter |
| Via Diameter | 30µm – 100µm |

Commercial Readiness

- Now shipping commercial quantities of glass wafers with vias
- Multiple approaches and partners for via metallization
- World-class metrology enabling ultra-flat wafers with high positional accuracy of vias

Dielectric Loss



Precision Glass
Solutions

CORNING

Superior Standards

Through Glass Via Solutions

Glass with precision vias ideal for RF components such as filters, switches, and antennas, and non-RF applications that require low-loss materials such as semiconductor interposers and packaging substrates.

Corning offers industry-leading wafer and panel format glass-based solutions. Our products help customers deliver increasingly demanding functionality and form factor requirements in consumer devices and Internet of Things applications.

Regional Sales Offices

China
Corning China (Shanghai) Regional Headquarters
6F, Li Ming Building, 111 Gui Qing Road
Shanghai, 200233, China
t: 0086 21 3338 4338
f: 0086 21 3338 4300

Europe
Corning GmbH—Corning International
Abraham-Lincoln-Strasse 30
65189 Wiesbaden, Germany
t: +49 611 7366 159
f: +49 611 7366 143

Japan
Corning International K.K.
Akasaka Intercity 7th floor
1-11-44 Akasaka, Minato-ku
Tokyo, 107-0052, Japan
t: +81 3 3586 1052
f: +81 3 3587 0906

Korea
Corning Korea Company Ltd.
6th Fl., Gangnam Finance Center
152, Teheran-ro, Gangnam-gu,
Seoul, 06236, Korea
t: +82 2 796 9500
f: +82 2 796 9300

North America
Corning Incorporated
Corporate Headquarters
1 Riverfront Plaza
Corning, NY 14831
United States
t: 607 974 9000

Singapore
Corning Singapore Holdings Pet Ltd.
1, Kim Seng Promenade
Great World City
#9-11/12 West Tower
237994, Singapore
t: +65 65729740
f: +65 67352913

Taiwan
Corning Incorporated-Taiwan
8F, No. 8, Sec.3, Minsheng E. Rd.
Zhongshan Dist., Taipei City 10480
Taiwan
t: +886 2 2716 0338
f: +886 2 2516 7500

Contact us
corning.com/precision-glass-solutions
precisionsg@corning.com