

OptiSheath® Fiber Distribution Hub Terminal Single Stub (FDHT-S)



OptiSheath FDHT-S Exterior



OptiSheath FDHT-S 76-Port Terminal

The OptiSheath® Fiber Distribution Hub Terminal Single Stub (FDHT-S) is an indoor/outdoor low-profile, wall-, pole-, or pedestal-mountable interconnect point between the central office feed and distribution network for rural single family living units (SFU), multidwelling units (MDU) or Business PON applications. The single stub design contains both the feeder and distribution fibers in a single sheath enabling faster installations, reduced cable space requirements and fewer splice access points. This solution can support up to 76 ports with configurations that include splitter and express port options. Express ports bypass the splitter and are typically used to support future growth opportunities, businesses or consumers who want the highest data rates. These features allow the terminal to be used as an alternative to traditional Indoor or Outdoor FDH Cabinets that require 76 or fewer ports.

Multiple terminal configurations are available to meet various rural SFU, MDU and Business PON applications. All FDHT-S Terminals come fully factory assembled and are available with the following options:

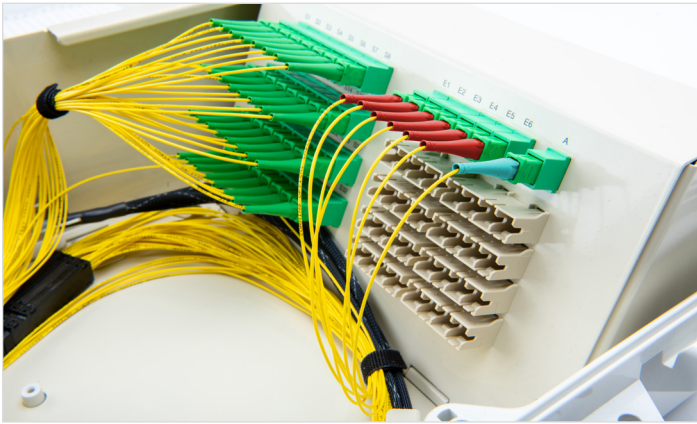
- Various gel-free ribbon indoor, outdoor or indoor/outdoor cable options in lengths from 100 to 1,000 feet.
- Express ports available in both SC UPC and SC APC.
- Cable lengths of 500 feet or more available on shipping reel to simplify installation.

Features	Benefits
No patching required on initial installation	At least 32 splitter ports and all express port connected from factory. Only splicing is required at cable stub end
Craft-friendly installation	No need to set up hoist due to compact size and lightweight design. Reduced labor, fewer technicians required
One cable supports both feeder and distribution	Reduced cable slack storage enables smaller more cost efficient handholes
Single cable stub	Reduced duct space consumption and trenching expense
Enables a single splice closure	Aesthetic installation, reduced amount of utilities installed in the communications footprint of shared utility poles.
Indoor and outdoor rated	Enables a variety of deployment options
Features up to 64 splitter ports and 12 express ports	Multiple configurations to meet a variety of applications
Provides up to 76 distribution ports	High-density fiber connectivity
Built-in mounting provisions for interior and exterior surfaces, including siding	Ease of deployment
Flame-retardant, impact-resistant, engineering-grade thermoplastic, and hinged cover with padlock	Maximizes product lifetime and security
Protective coverings for incoming and drop cables	Indoor/outdoor plastic or metal skirt available to protect incoming and drop cables

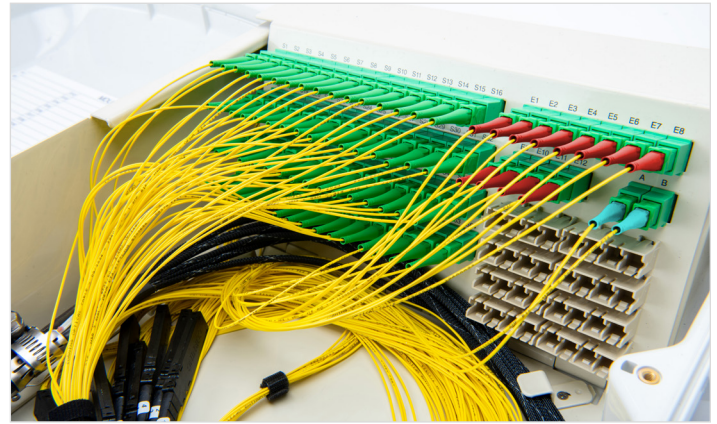


OptiSheath FDHT-S 38-Port Terminal

OptiSheath® FDHT Terminal Single Stub (FDHT-S)



OptiSheath FDHT-S 38-Port Terminal



OptiSheath FDHT-S 76-Port Terminal

Standards

Design and test criteria	Terminals tested and qualified to applicable sections of Telcordia GR-771. Listed to UL, 94-V0
--------------------------	--

Specifications

General Specifications

Weight	14 lb (6.35 kg)
Dimensions (H x W x D)	16.29 x 14.59 x 6.0 in (41.4 x 37.1 x 15.2 cm)
Subscriber Connection	38 or 76 ports
Door	Lockable Single-hinged door
Connectors	Splitter ports SC APC only, Express ports SC APC or SC UPC
Drop Connection	Single cable stub supports both input and distribution
Maximum Number of Splitter Inputs	2
Color	Cool Gray
Mounting Type	Pole, pedestal or wall mountable

Optical Specification – 1x32 Splitter

Splitter Insertion Loss ¹	17.1 dB
Splitter PDL (Polarization Dependent Loss)	0.3 dB
Splitter Insertion Loss ¹ Typical	15.7 dB
Splitter Uniformity	1.5 dB
Splitter Directivity	>55 db
Wavelength Range	1260-1360 and 1480-1625 nm

Specifications

Optical Specification – 1x64 Splitter	
Splitter Insertion Loss Max'	20.8 dB
Splitter PDL (Polarization Dependent Loss)	0.4 dB
Splitter Insertion Loss' Typical	19.8 dB
Splitter Uniformity	1.5 dB
Splitter Directivity	>55 db
Wavelength Range	1260-1360 and 1480-1625 nm

Splitter Features

First with bend-improved fiber on input and output legs (ITU-T G.657.A compliant)

- Field-proven performance
- GR-1209 and GR-1221 qualified
- GR-326 certified connectors
- Secure housing protects splitter device throughout product life

Ordering Information

MDH											S
	1	2	3	4	5	6	7				

1 Select input fiber count.
 96 = 96 fiber cable (required for 76 port terminal-64 splitter ports and 12 express ports)
 48 = 48 fiber cable (required for 38 port terminal-32 splitter ports and 6 express ports)

2 Select input cable length.
 31 = 100 ft (31 m)
 92 = 300 ft (92 m)
 F3 = 500 ft (150 m)
 Q4 = 800 ft (244 m)
 W5 = 1000 ft (305 m)

3 Select total number of ports including splitter and express ports.
 38 = 38 Total number of distribution ports.
 76 = 76 Total number of distribution ports.

4 Select distribution field connector.
 6C = SC APC, (Both splitter output and pass-through ports are SC APC)
 SU = Split Use, (Splitter output ports are SC APC and pass-through ports are SC UPC)

5 Stubbed- with pass-through ports
 C4 = SST-Ribbon™ Cable Gel-Free All-Dielectric Non Armored (48 or 96 fiber)
 CF = FREEDM® Ribbon Riser I/O Cable (48 or 96 fiber)
 V1 = RPX® Ribbon Toneable (48 or 96 fiber)
 V4 = RPX Ribbon (48 or 86 fiber)

6 Select splitter type.
 OA = 1x32 Splitter (for use with 38 port terminal only)
 2A = Two 1x32 Splitters (for use with 76 port terminal only)
 OL = 1x64 Splitter (for use with 76 port terminal only)

7 Select drop connection.
 2 = Used on all stubless and stubbed units with a stubbed cable length of 500 ft or less.
 R = Used on all stubbed terminals with a stub length greater than 500 ft. Ships on a reel.

OptiSheath® MDU Terminal Accessories



OptiSheath MDU Terminal Indoor/Outdoor Skirt



OptiSheath MDU Terminal Mounting Bracket

The indoor/outdoor protective skirt kit allows the removal and installation of the skirt without tools after initial installation. The cavity created by the skirt and mounting bracket features allow both cable management and storage for the incoming and drop cables.

Part Number	Product Description	Units per Delivery
MDU-PLAS-SKRT-FR	Indoor/outdoor plastic protective skirt	1/1
MDU-PLAS-BRKT-FR	Indoor/outdoor plastic skirt mounting bracket	1/1
MDU-PLAS-SKRT-BRKT-FR	Indoor/outdoor plastic skirt and mounting bracket kit*	1/1
MDU-SKRT-U3	Metal, protective U-Guard for incoming drops and cables	1/1
MDU-SLACK-KIT	Metal slack storage unit that mounts on the back of the MDU terminal	1/1

*Kit includes watertight fittings to seal incoming drops, braided tubing for protecting and routing slack when splicing-in 4.8-mm drops and filler cords to seal inputs when using fewer than eight drops per input.

CORNING

Corning Optical Communications LLC • 4200 Corning Place • Charlotte, NC 28216 USA
 800-743-2675 • FAX: 828-325-5060 • International: +1-828-901-5000 • www.corning.com/opcomm

Corning Optical Communications reserves the right to improve, enhance, and modify the features and specifications of Corning Optical Communications products without prior notification. A complete listing of the trademarks of Corning Optical Communications is available at www.corning.com/opcomm/trademarks. All other trademarks are the properties of their respective owners. Corning Optical Communications is ISO 9001 certified. © 2025 Corning Optical Communications. All rights reserved. CRR-2002-AEN / February 2025