

OptiSheath® Multidwelling Unit (MDU) Splitter Terminal



OptiSheath MDU Splitter Terminal



OptiSheath MDU Splitter Terminal, Connector Panel

The OptiSheath® MDU splitter terminal is a rugged, low-cost, low-profile interconnect between the central office feed and indoor/outdoor drop cables for multidwelling unit applications. It simplifies MDU installation by reducing the materials, complexity, and space required to turn-up service. A single housing combines the functionality of a local convergence cabinet with an MDU terminal.

The multilayer design allows installers to access only the components necessary for initial installation or subscriber turn-up. The MDU's protected layer houses the splitter module and allows for pigtail splicing of distribution and drop cables as needed. 1x4, 1x8, 1x16, and 1x32 splitters are available, as well as dual 1x4, dual 1x8, and dual 1x16 splitters. Integrated parking with prerouted splitter legs is parked in place by the factory. All splitter modules are compatible and interchangeable with all OptiTect® Local Convergence Cabinets, Gen III Series, and the Eclipse® hardware family.

Features	Benefits
Indoor and outdoor rated	Enables a variety of deployment options
4 to 32 ports in a single, low-profile footprint	Aesthetically pleasing
Preterminated pigtails	Simplifies drop cable splicing
Built-in mounting provisions for interior and exterior surfaces, including siding	Ease of deployment
Flame-retardant, impact-resistant, engineering-grade thermoplastic and hinged cover with padlock	Maximizes product lifetime and security
Protective coverings for incoming and drop cables	Indoor/outdoor plastic or metal skirt available to protect incoming and drop cables

Standards

Design and test criteria

Terminals tested and qualified to applicable sections of Telcordia GR-771. Listed to UL, 94-V0

OptiSheath® MDU Terminal



OptiSheath MDU Splitter Terminal, Splice Compartment



OptiSheath MDU Splitter Terminal, Standard Splitter Module Configuration

Specifications

General Specifications

Weight	6.5 lb (3 kg)
Dimensions (H x W x D)	16.29 x 14.59 x 6.0 in (41.4 x 37.1 x 15.2 cm)
Subscriber Connection	4, 8, 16, 32
Door	Single-hinged door
Connectors	SC APC
Drop Connection	Spliced-in drops or preconnectorized/field-terminated distribution
Maximum Number of Splitter Inputs	4
Color	Cool Gray
Mounting Type	Wall mountable

1x32 Splitter Module

Module Size	63 x 23 x 125 mm
Insertion Loss, Typical	15.70 dB
Insertion Loss, Maximum	17.10 dB
Return Loss	> 55 dB
Wavelength Range	1260-1360 and 1480-1625 nm
Uniformity	1.5
Directivity	> 55 dB
PDL	0.3

Specifications (continued)

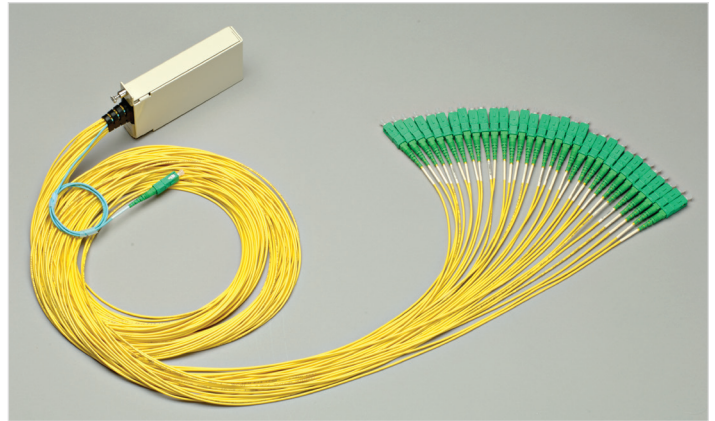
Dual 1x16 Splitter Modules	
Module Size	63 x 23 x 125 mm
Insertion Loss, Typical	12.90 dB
Insertion Loss, Maximum	14.00 dB
Return Loss	> 55 dB
Wavelength Range	1260-1360 and 1480-1625 nm
Uniformity	1.2
Directivity	> 55 dB
PDL	0.3

1x4 and Dual 1x4 Slim Splitter Modules	
Module Size	63 x 11.5 x 125 mm
Insertion Loss, Typical	6.70 dB
Insertion Loss, Maximum	7.40 dB
Return Loss	> 55 dB
Wavelength Range	1260-1360 and 1480-1625 nm
Uniformity	1.0
Directivity	> 55 dB
PDL	0.3

1x8 and Dual 1x8 Slim Splitter Modules	
Module Size	63 x 11.5 x 125 mm
Insertion Loss, Typical	9.80 dB
Insertion Loss, Maximum	10.50 dB
Return Loss	> 55 dB
Wavelength Range	1260-1360 and 1480-1625 nm
Uniformity	1.0
Directivity	> 55 dB
PDL	0.2

Gen III Splitter Modules Features

- First with bend-improved fiber on input and output legs (ITU-T G.657.A compliant)
- Field-proven performance
- GR-1209 and GR-1221 qualified
- GR-326 certified connectors
- Secure housing protects module during installation and throughout product life
- Slim module is half the thickness of a full-size module to maximize terminal density
- Module is shipped with mounting bracket



Gen III Splitter Module

Ordering Information

MDU 6C -

1
2
3
4
5
6
7

1 Select input fiber count.

00 = Stubless
 04 = 4-fiber stub
 12 = 12-fiber stub

2 Select input cable length.

00 = Stubless
 31 = 100 ft (31 m)
 92 = 300 ft (92 m)
 F3 = 500 ft (150 m)
 W5 = 1,000 ft (305 m)

3 Select number of ports.*

04 = 4 ports
 08 = 8 ports
 16 = 16 ports
 32 = 32 ports

4 Select cable type.

Use with stubless terminals only:

BB = Loose tube pigtailed (includes pigtail from base adapter to splice tray, splitter plugs into opposite side of base adapter).
 00 = No splice input pigtail feeding splitter port (SC APC adapter), requires field termination or connectorized feeder cable

Use with stubbed terminals only:

UF = FREEDM® LT indoor/outdoor
 BZ = FR SST flat drop LT
 BF = RPX® furcation flat drop ribbon (<18 ft)
 C7 = Ribbon riser

5 Select drop connection.

00 = Standard cable (includes trays and pigtailed for spliced drops, supports both stubbed and stubless)
 13 = Connectorized drops (no pigtailed or trays), stubbed terminal only
 14 = Stubless with no feeder pigtail, connectorized drops, no trays (00 must be selected in section 4).

6 Select splitter module type.*

A = 1x32 (32 output)
 D = Dual 1x16 (32 output)
 E = Dual 1x8 slim (16 output)
 F = 1x8 slim (8 output)
 H = 1x4 slim (4 output)
 J = 1x16 (16 output)
 I = Dual 1x4 slim (8 output)

7 Select splitter module quantity.

1 = 1 splitter module
 2 = 2 slim splitter modules.

*Port count must match splitter output count

OptiSheath® MDU Terminal Accessories



OptiSheath MDU Terminal Indoor/Outdoor Skirt



OptiSheath MDU Terminal Mounting Bracket

The indoor/outdoor protective skirt kit allows the removal and installation of the skirt without tools after initial installation. The cavity created by the skirt and mounting bracket features allow both cable management and storage for the incoming and drop cables.

Part Number	Product Description	Units per Delivery
MDU-PLAS-SKRT-FR	Indoor/outdoor plastic protective skirt	1/1
MDU-PLAS-BRKT-FR	Indoor/outdoor plastic skirt mounting bracket	1/1
MDU-PLAS-SKRT-BRKT-FR	Indoor/outdoor plastic skirt and mounting bracket kit	1/1
MDU-SKRT-U3	Metal, protective U-Guard for incoming drops and cables	1/1
MDU-CC-BT-KIT	Corning® ClearCurve® cable, 4.8-mm rugged drop MDU installation kit* (quantity for 10 MDUs)	1/1
MDU-SLACK-KIT	Metal slack storage unit that mounts on the back of the MDU terminal	1/1

*Kit includes watertight fittings to seal incoming drops, braided tubing for protecting and routing slack when splicing in 4.8-mm drops and filler cords to seal inputs when using fewer than eight drops per input.

CORNING

Corning Optical Communications LLC • 4200 Corning Place • Charlotte, NC 28216 USA
 800-743-2675 • FAX: 828-325-5060 • International: +1-828-901-5000 • www.corning.com/opcomm

Corning Optical Communications reserves the right to improve, enhance, and modify the features and specifications of Corning Optical Communications products without prior notification. A complete listing of the trademarks of Corning Optical Communications is available at www.corning.com/opcomm/trademarks. All other trademarks are the properties of their respective owners. Corning Optical Communications is ISO 9001 certified. © 2024 Corning Optical Communications. All rights reserved. CRR-1560-AEN / December 2024