



CORNING

# Cyxtera

Product Ordering Guide



# Trust Your Network to Corning!

To help reduce the time you spend on your end-to-end infrastructure, we've created this customized Ordering Guide. This guide is intended to provide at-a-glance ordering information for your specified products for meet-me room, distribution, and cage or module environments. For maximum flexibility, improved lead times, and a reduction in the total cost of ownership, you can count on Corning.

## Contents

Meet-Me Room . . . . .	3
Customer Side . . . . .	6
Assemblies . . . . .	10
Multifiber Assemblies . . . . .	11

## Meet-Me Room

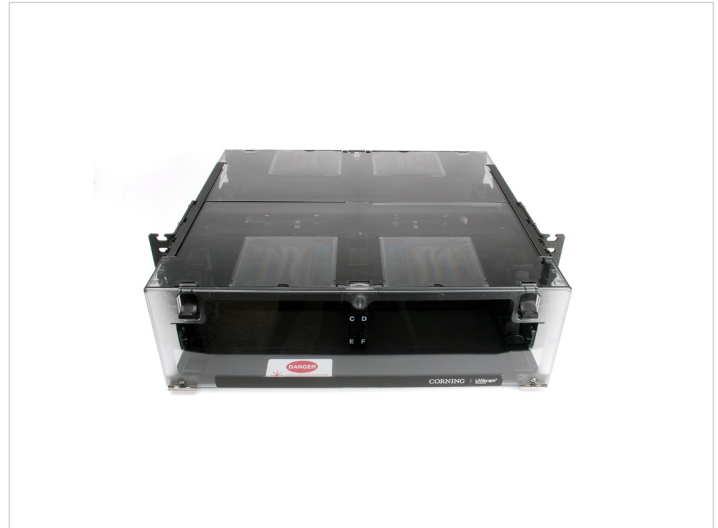
### Closet Connector Housing (CCH)

Closet connector housings (CCHs) provide interconnect or cross-connect capabilities between outside plant, riser or distribution cables and opto-electronics. Like other LANscape® solutions hardware, the housings accept CCH connector panels. In addition, the housings accept CCH cassettes and CCH modules.

Closet Connector Housing (CCH)	
Corning Part Number	Description
<b>CCH-01U</b>	CCH 1U Housing
<b>CCH-02U</b>	CCH 2U Housing
<b>CCH-04U</b>	CCH 4U Housing



CCH-01U



CCH-02U



CCH-04U

## Meet-Me Room (continued)

### Closet Connector Housing Panels (CCH-CP)

Corning closet connector housing panels (CCH-CP) are offered in a variety of fiber counts for use with LANscape® solutions hardware products for a “one-size-fits-all” approach. Used with factory-installed or field-installable connectors, these panels provide interconnect or cross-connect capability in a housing at main cross-connects, intermediate cross-connects, telecommunication rooms or work areas.

Closet Connector Housing Panels (CCH-CP)	
Corning Part Number	Description
<b>CCH-CP24-A9</b>	CCH Panel, 24 F, LC UPC, single-mode
<b>CCH-CP12-59</b>	CCH Panel, 12 F, SC UPC, single-mode
<b>CCH-CP24-E4</b>	CCH Panel, 24 F, LC, multimode OM3/OM4
<b>CCH-CP12-E7</b>	CCH Panel, 12 F, SC, multimode OM3/OM4



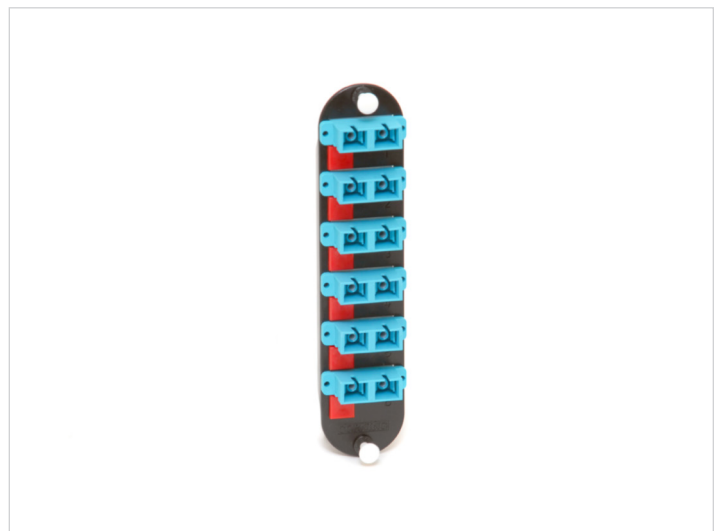
CCH-CP24-A9



CCH-CP12-59



CCH-CP24-E4



CCH-CP12-E7

## Meet-Me Room (continued)

### CCH Compatible Panel

CCH compatible panel, can be used with CCH housings, as well as CPP-01U-PNL, accepts six keystone adapters, listed below.

CCH Compatible Panel	
Corning Part Number	Description
1LAN-D920CC-6	CCH Compatible Panel accepts 6 keystone adapters or jacks



1LAN-D90CC-6

Keystone Adapters		
Corning Part Number	Configuration	Description
WLL-KS-A9	LC single-mode	Keystone adapters to fit CCH compatible panel 1LAN-D920CC-6
WLL-KS-E4	LC OM3/OM4	Keystone adapters to fit CCH compatible panel 1LAN-D920CC-6
WLL-KS-3C	SC single-mode	Keystone adapters to fit CCH compatible panel 1LAN-D920CC-6
WLL-KS-E6	SC OM3/OM4	Keystone adapters to fit CCH compatible panel 1LAN-D920CC-6
WLL-KS-L3	Voice	Keystone adapters to fit CCH compatible panel 1LAN-D920CC-6
WLL-KS-S2	Cat5	Keystone adapters to fit CCH compatible panel 1LAN-D920CC-6
WLL-KS-S1	Cat6	Keystone adapters to fit CCH compatible panel 1LAN-D920CC-6
WLL-KS-S4	BNC Coax	Keystone adapters to fit CCH compatible panel 1LAN-D920CC-6



WLL Keystone

## Customer Side

### CPP 1U Rack-Mountable Panel

CPP 1U Rack-Mountable Panel, capacity for up to two (2) CCH panels. See pages 6 & 8 for part numbers.

CPP 1U Rack-Mountable Panel	
Corning Part Number	Description
<b>CPP-01U-PNL</b>	CPP 1U Panel accepts 2 CCH Panels
<b>EDGE-EMOD-STRN</b>	Strain-Relief Bracket to be used with CPP
CXY-PNL1U-KIT	Part number contains the two parts above in an Accu-Tech® combined kit
CYXKIT1	Part number contains the two parts above in an Anixter® combined kit



CPP-01U-PNL



EDGE-EMOD-STRN

## Customer Side (continued)

### Closet Connector Housing Panels (CCH-CP)

Corning closet connector housing panels (CCH-CP) are offered in a variety of fiber counts for use with LANscape® solutions hardware products for a “one-size-fits-all” approach. Used with factory-installed or field-installable connectors, these panels provide interconnect or cross-connect capability in a housing at main cross-connects, intermediate cross-connects, telecommunication rooms or work areas.

Closet Connector Housing Panels (CCH-CP)	
Corning Part Number	Description
<b>CCH-CP24-A9</b>	CCH Panel, 24 F, LC UPC, single-mode
<b>CCH-CP12-S9</b>	CCH Panel, 12 F, SC UPC, single-mode
<b>CCH-CP24-E4</b>	CCH Panel, 24 F, LC, multimode OM3/OM4
<b>CCH-CP12-E7</b>	CCH Panel, 12 F, SC, multimode OM3/OM4



CCH-CP24-E4



CCH-CP12-E7



CCH-CP24-A9

## Customer Side (continued)

### CCH Compatible Panel

CCH compatible panel, can be used with CCH housings, as well as CPP-01U-PNL, accepts six keystone adapters, listed below.

CCH Compatible Panel	
Corning Part Number	Description
1LAN-D920CC-6	CCH Compatible Panel accepts 6 keystone adapters or jacks



1LAN-D90CC-6

Keystone Adapters		
Corning Part Number	Configuration	Description
WLL-KS-A9	LC Single-Mode	Keystone adapters to fit CCH compatible panel 1LAN-D920CC-6
WLL-KS-E4	LC OM3/OM4	Keystone adapters to fit CCH compatible panel 1LAN-D920CC-6
WLL-KS-3C	SC Single-Mode	Keystone adapters to fit CCH compatible panel 1LAN-D920CC-6
WLL-KS-E6	SC OM3/OM4	Keystone adapters to fit CCH compatible panel 1LAN-D920CC-6
WLL-KS-L3	Voice	Keystone adapters to fit CCH compatible panel 1LAN-D920CC-6
WLL-KS-S2	CAT 5	Keystone adapters to fit CCH compatible panel 1LAN-D920CC-6
WLL-KS-S1	CAT 6	Keystone adapters to fit CCH compatible panel 1LAN-D920CC-6
WLL-KS-S4	BNC Coax	Keystone adapters to fit CCH compatible panel 1LAN-D920CC-6



WLL Keystone

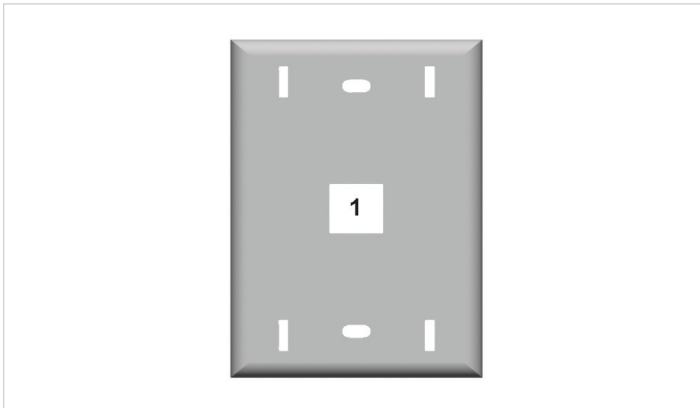


## Customer Side (continued)

### Wall-Plate Outlet (WLL)

Corning wall-plate outlet (WLL) is a highly configurable outlet product, available in both single- and double-gang configurations. It is designed for use within fiber-to-the-desk (FTTD) applications but may also be used to connect telephones and other peripherals to a network.

Wall-Plate Outlet (WLL)	
Corning Part Number	Description
WLL-PL-AA	Wall-Plate (other configurations available upon request)



Straight, 1 Port AA



Angled, 1 Port AM

Keystone Adapters		
Corning Part Number	Configuration	Description
WLL-KS-A9	LC Single-Mode	Keystone adapters to fit CCH compatible panel 1LAN-D920CC-6
WLL-KS-E4	LC OM3/OM4	Keystone adapters to fit CCH compatible panel 1LAN-D920CC-6
WLL-KS-3C	SC Single-Mode	Keystone adapters to fit CCH compatible panel 1LAN-D920CC-6
WLL-KS-E6	SC OM3/OM4	Keystone adapters to fit CCH compatible panel 1LAN-D920CC-6
WLL-KS-L3	Voice	Keystone adapters to fit CCH compatible panel 1LAN-D920CC-6
WLL-KS-S2	CAT 5	Keystone adapters to fit CCH compatible panel 1LAN-D920CC-6
WLL-KS-S1	CAT 6	Keystone adapters to fit CCH compatible panel 1LAN-D920CC-6
WLL-KS-S4	BNC Coax	Keystone adapters to fit CCH compatible panel 1LAN-D920CC-6



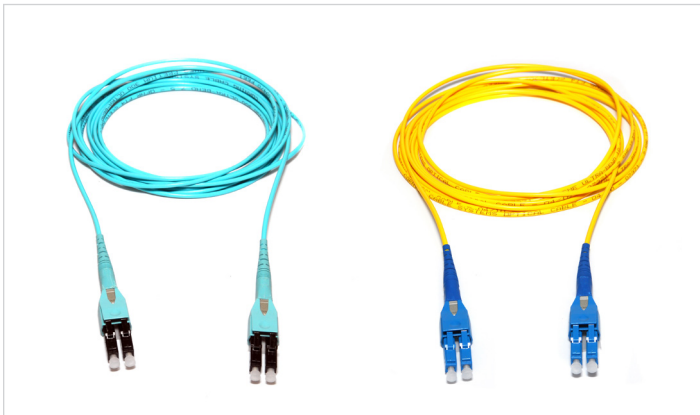
WLL Keystone

## Jumpers

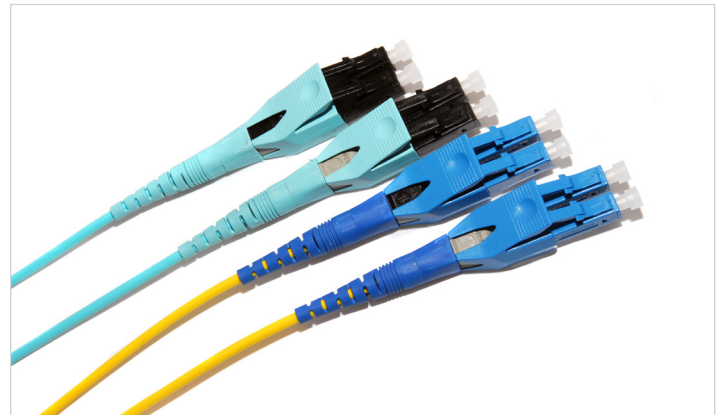
Corning offers the most complete line of connectors and factory-terminated cables, from single-fiber patch cords to high-fiber-count assemblies. As the industry's leading supplier of cable assemblies, Corning's state-of-the-art manufacturing process ensures unsurpassed connector performance with products that meet or exceed all industry standards for reflectance and insertion loss.

Reverse Polarity Uniboot Duplex Patch Cords	
Corning Part Number	Description
<b>787802GD820XXXM*</b>	Uniboot - LC/LC single-mode
<b>797902QD820XXXM*</b>	Uniboot - LC/LC multimode

\*When building part number, replace XXX with jumper length between 1-50 m (other lengths available if needed)



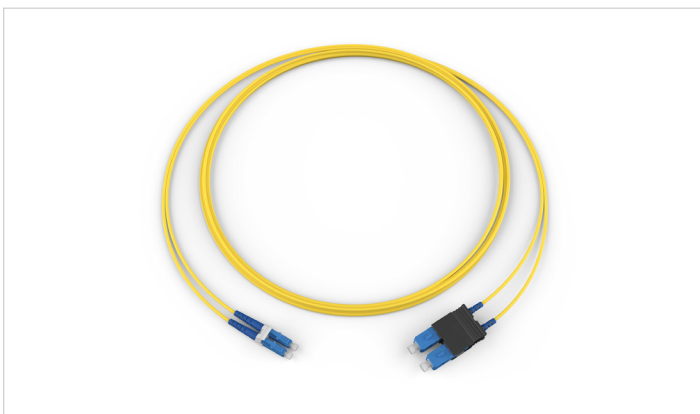
Reverse Polarity Uniboots



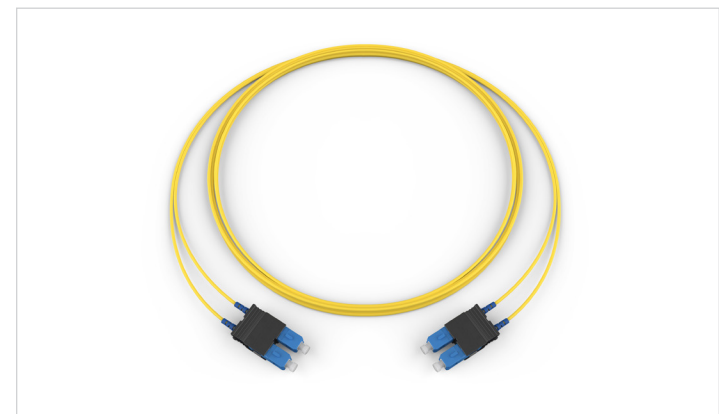
Reverse Polarity Uniboots

Duplex Patch Cords	
Corning Part Number	Description
<b>047202G5820XXXM*</b>	SC/LC Duplex, single-mode
<b>055702Q5820XXXM*</b>	SC/LC Duplex, multimode
<b>727202G5820XXXM*</b>	SC/SC, single-mode
<b>575702Q5820XXXM*</b>	SC/SC, multimode

\*When building part number, replace XXX with jumper length between 1-50 m (other lengths available if needed)



Duplex Patch Cords



Duplex Patch Cords

## Jumper in a Box



Jumper in a Box

Jumper in a box is an innovative packaging solution designed to fulfill your needs of organization, convenience, and efficiency. It includes a self-tracking inventory system and bold, color-coded part identification at a glance. Jumpers are available in a wide range of configurations (see below for full details).

Features	Benefits
Bags that are connected with individual jumpers in an easy payout	Easy inventory management and inventory control
Easy-to-identify box labeling of jumper type/QR code	Quick visual identification makes it easy to find the correct jumper very quickly, type and length
Identifier that lets customer know it is time to reorder	Helps control inventory and reduces risk of running out of product
Reduced individual jumper packaging	Less waste and less time to unpackage
Sequential number of each jumper in the payout box	Helps control inventory

Jumper in a Box Sample Part Number	
Corning Part Number	Description
<b>7878-OS2-B70-01M</b>	Single-Mode LC-LC Uniboot, 1 m jumpers

## LC Duplex Reverse Polarity Uniboot Jumper in a Box

### Ordering Information

<input type="text"/> <input type="text"/> <input type="text"/> <input type="text"/>	-	<input type="text"/> <input type="text"/> <input type="text"/>	-	<input type="text"/> <input type="text"/> <input type="text"/>	-	<input type="text"/> <input type="text"/>	M
<b>1</b>		<b>2</b>		<b>3</b>		<b>4</b>	<b>5</b>

**1** Select connector code.  
**Multimode**  
7979 = LC PC Uniboot  
**Single-mode**  
7878 = LC UPC Uniboot

**2** Select cable and fiber type.  
OM4 = DFX 250 R MM OM4  
OS2 = DFX 250 R SM OS2  
Corning® ClearCurve®  
fiber

**3** Select quantity. Quantity per box is determined by length.  
B70 = 1-5 m or 1-16 ft  
B50 = 6-10 m or 17-35 ft  
B40 = 11-15 m or 36-52 ft  
B30 = 16-20 m or 53-66 ft

**4** Select jumper length\*.  
01 - 20 meters  
\*Maximum length is 20 m

**5** Select unit of measure.  
M = Meters

## SC Duplex Jumper in a Box

### Ordering Information

<input type="text"/> <input type="text"/> <input type="text"/> <input type="text"/>	-	<input type="text"/> <input type="text"/> <input type="text"/>	-	<input type="text"/> <input type="text"/> <input type="text"/>	-	<input type="text"/> <input type="text"/>	M
<b>1</b>		<b>2</b>		<b>3</b>		<b>4</b>	<b>5</b>

**1** Select connector code.  
**Multimode Duplex**  
5757 = SC PC  
**Single-mode Duplex**  
7272 = SC UPC

**2** Select cable and fiber type.  
ZR4 = 2.0 mm Zipcord R MM OM4  
ZR2 = DFX 250 R SM OS2  
ClearCurve

**3** Select quantity. Quantity per box is determined by length.  
B60 = 1-2 m or 1-7 ft  
B50 = 3-4 m or 8-13 ft  
B40 = 5-6 m or 14-20 ft  
B35 = 7-8 m or 21-26 ft  
B30 = 9-10 m or 27-33 ft

**4** Select jumper length\*.  
01 - 10 meters  
\*Maximum length is 10 m

**5** Defines unit of measure.  
M = Meters

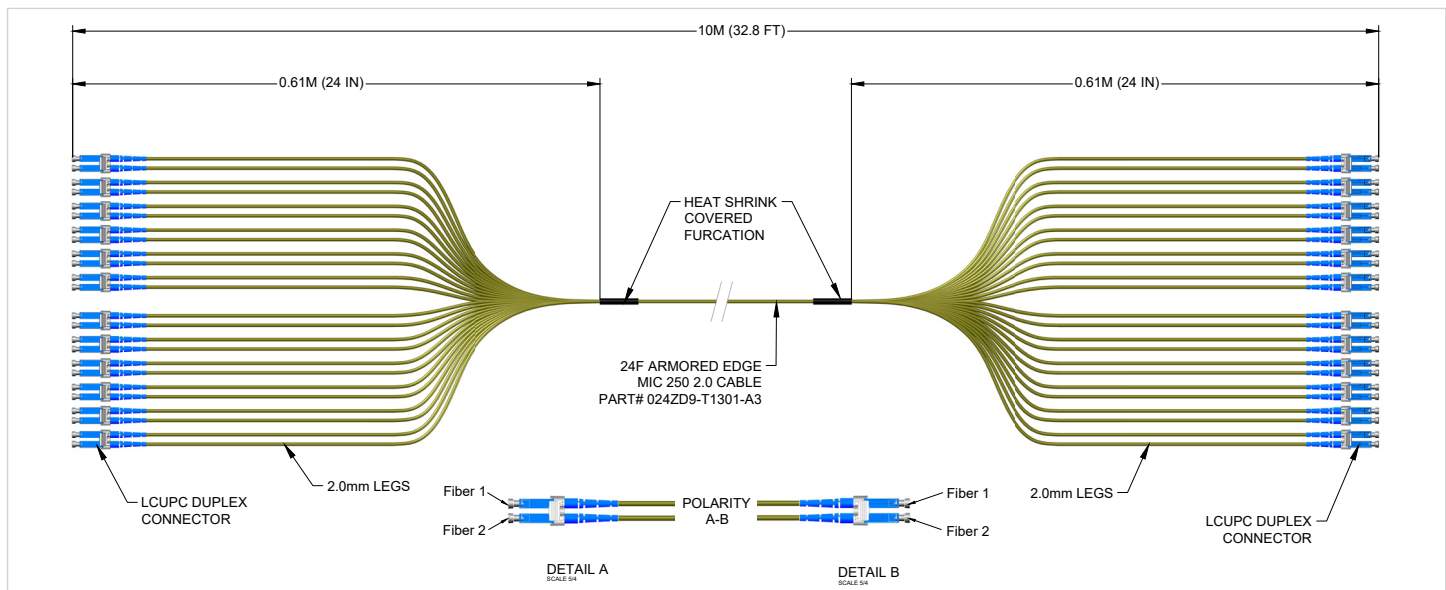
## Multifiber Assemblies

As the industry's leading supplier of cable assemblies, Corning's state-of-the-art manufacturing process ensures unsurpassed connector performance that meets or exceeds all industry standards for reflectance and insertion loss. Highly trained and qualified associates thoroughly inspect the incoming fibers and ferrules, then assemble and polish them using a carefully monitored and controlled process. The assemblies undergo rigorous performance testing to ensure optimal quality. Corning's preterminated assemblies use only high-quality Corning optical fibers to ensure total performance quality.

For more information, view the [family specification sheet](#).

Armored Single-Mode OS2	
Corning Part Number	Description
040402GA9KKB001M	2-Strand Assembly, single-mode, LC to LC, armored indoor plenum
040406GA9KKB001M	6-Strand Assembly, single-mode, LC to LC, armored indoor plenum
040412GA9KKB001M	12-Strand Assembly, single-mode, LC to LC, armored indoor plenum
040424GA9KKB001M	24-Strand Assembly, single-mode, LC to LC, armored indoor plenum
04048GA9KKB001M	48-Strand Assembly, single-mode, LC to LC, armored indoor plenum
040472GA9KKB001M	72-Strand Assembly, single-mode, LC to LC, armored indoor plenum
040496GA9KKB001M	96-Strand Assembly, single-mode, LC to LC, armored indoor plenum
0404E4GA9KKB001M	144-Strand Assembly, single-mode, LC to LC, armored indoor plenum

Armored Multimode OM4	
Corning Part Number	Description
050502QA9KKB001M	Multistrand Assemblies, OM4 armored, LC to LC, 2 strands
050506QA9KKB001M	Multistrand Assemblies, OM4 armored, LC to LC, 6 strands
050512QA9KKB001M	Multistrand Assemblies, OM4 armored, LC to LC, 12 strands
050524QA9KKB001M	Multistrand Assemblies, OM4 armored, LC to LC, 24 strands
050548QA9KKB001M	Multistrand Assemblies, OM4 armored, LC to LC, 48 strands
050572QA9KKB001M	Multistrand Assemblies, OM4 armored, LC to LC, 72 strands
050596QA9KKB001M	Multistrand Assemblies, OM4 armored, LC to LC, 96 strands
0505E4QA9KKB001M	Multistrand Assemblies, OM4 armored, LC to LC, 144 strands



Example of Cable Assembly Construction

## Multifiber Assemblies (continued)

Double Jacket Single-Mode OS2	
Corning Part Number	Description
040402GD9KKB001M	2-Strand Assembly, single-mode, LC to LC, indoor plenum
040406GD9KKB001M	6-Strand Assembly, single-mode, LC to LC, indoor plenum
040412GD9KKB001M	12-Strand Assembly, single-mode, LC to LC, indoor plenum
040424GD9KKB001M	24-Strand Assembly, single-mode, LC to LC, indoor plenum
040448GD9KKB001M	48-Strand Assembly, single-mode, LC to LC, indoor plenum
040472GD9KKB001M	72-Strand Assembly, single-mode, LC to LC, indoor plenum
040496GD9KKB001M	96-Strand Assembly, single-mode, LC to LC, indoor plenum
0404E4GD9KKB001M	144-Strand Assembly, single-mode, LC to LC, indoor plenum

Double Jacket Multimode OM4	
Corning Part Number	Description
050502QD9KKB001M	Multistrand Cable Assembly, OM4, LC to LC, 2 strands
050506QD9KKB001M	Multistrand Cable Assembly, OM4, LC to LC, 6 strands
050512QD9KKB001M	Multistrand Cable Assembly, OM4, LC to LC, 12 strands
050524QD9KKB001M	Multistrand Cable Assembly, OM4, LC to LC, 24 strands
050548QD9KKB001M	Multistrand Cable Assembly, OM4, LC to LC, 48 strands
050572QD9KKB001M	Multistrand Cable Assembly, OM4, LC to LC, 72 strands
050596QD9KKB001M	Multistrand Cable Assembly, OM4, LC to LC, 96 strands
0505E4QD9KKB001M	Multistrand Cable Assembly, OM4, LC to LC, 144 strands



48-Fiber LC Uniboot to LC Uniboot Assembly



48-Fiber LC Uniboot to LC Uniboot Assembly

## Notes



CORNING

Corning Optical Communications LLC • 4200 Corning Place • Charlotte, NC 28216 USA  
800-743-2675 • FAX: 828-325-5060 • International: +1-828-901-5000 • [www.corning.com/opcomm](http://www.corning.com/opcomm)

Corning Optical Communications reserves the right to improve, enhance, and modify the features and specifications of Corning Optical Communications products without prior notification. A complete listing of the trademarks of Corning Optical Communications is available at [www.corning.com/opcomm/trademarks](http://www.corning.com/opcomm/trademarks). All other trademarks are the properties of their respective owners. Corning Optical Communications is ISO 9001 certified. © 2020, 2021 Corning Optical Communications. All rights reserved. LAN-2784-AEN / February 2020