



CORNING

Data Center

Reel Return Program

Data Center Reel Return

The following **EMPTY** reels are **accepted** by the **Data Center Reel Return Program**:

Black 84-in Plus, 84-in, and 72-in steel reels



50-in and 42-in composite reels with wooden staves or fiber board drums



36-in and 32-in blow molded plastic reels



The following materials are **NOT** Accepted by Data Center Reel Return Program:

- Wooden reels
- Plywood reels
- Corrugated plastic reels
- Damaged reels
- Packaging waste like pallets, stretch wrap, boxes, bubble wrap, dunnage, or other non-reel items
- Cable waste or any Corning product

Reel Return Process

To return Corning reels, we require you to complete the following steps:

1. Consolidate your acceptable, empty Corning reels
2. Email your Corning Commercial Contact, copying OCSReturns@corning.com
Subject line should read “[Customer Name] Reel Return Request [Site Name]” including your site name
3. Include the required information:
 - Requester Name
 - Contact Phone
 - Pickup Address
 - Reel Type, Size, and Dimensions
 - Reel Quantity
 - Requested Pickup Date
 - Pickup Instructions/Restrictions
 - Photo Attachment of Reels for Pickup
4. Your Corning Contact will confirm pickup date and provide you with the Bill of Lading via email
5. Please print two copies of the Bill of Lading. At the time of pickup, confirm the load matches the Bill of Lading and load the reels per the loading instructions provided in the “Reel Overview” section.
6. The driver will sign the Bill of Lading and secure the reels
7. If you experience issues with your return, please reach out to your Corning contact

* Please note, reels must meet our **minimum pickup quantity**, be in **good condition**, and **you must be able to load** to a dry van or flat bed. If you are unable to meet these requirements but still wish to complete a return, please reach out to your Corning Commercial Contact.

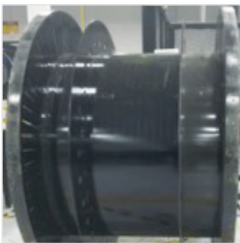
Steel Reel Returns



84-in Plus	
Weight	1,049 lbs
Dimensions	84 x 42 x 52 in
Full Truckload (FTL) Quantity	6 reels
Minimum Return Quantity	4 reels



84-in	
Weight	1,049 lbs
Dimensions	84 x 42 x 52 in
Full Truckload Quantity	6 reels
Minimum Return Quantity	4 reels

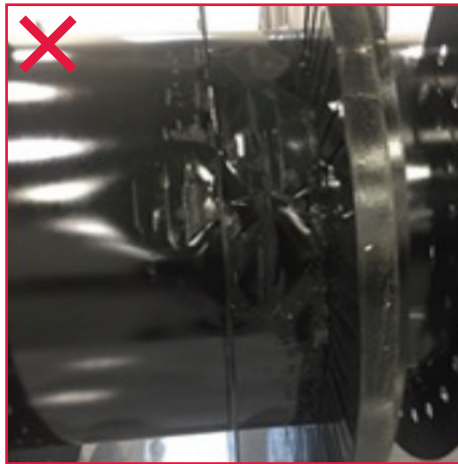


72-in	
Weight	840 lbs
Dimensions	72 x 51 x 36 in
Full Truckload Quantity	8 reels
Minimum Return Quantity	4 reels

Quality Requirements:



Reels with removable dirt, lack of paint in small parts, oxidation, sinking at the ends of the reel (between the flange and the external diameter).



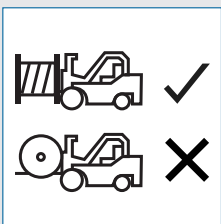
Material with dents in the central part of the drum.



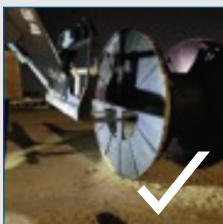
Material with dents or damage on the flange.

Loading Guide:

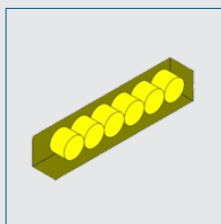
Pallets are NOT required



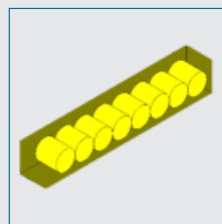
Load reels to truck using forklift, pallet jack, or lull



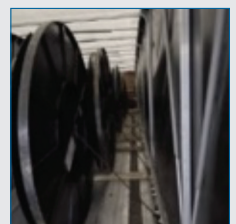
Carrier will secure the reels to the bed with load bars or chains:



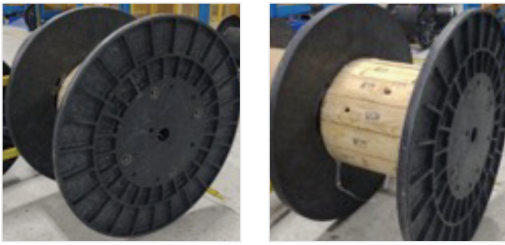
84-in Plus and 84-in Reels



72-in reel



Composite Reel Returns



50-in	
Weight	152 lbs
Dimensions	50 x 27 x 24 in
Full Truckload (FTL) Quantity	72 reels
Minimum Return Quantity	72 reels

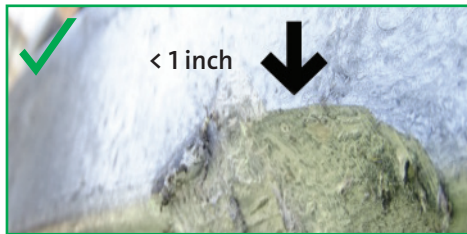


42-in	
Weight	108 lbs
Dimensions	42 x 24 x 20 in
Full Truckload Quantity (53-ft Dry Van)	120 reels
Minimum Return Quantity	72 reels

Quality Requirements:



Non-extensive, superficial damage to the edge or sides of the flange no greater than 1 inch



Non-extensive, superficial damage to the edge or sides of the flange no greater than 1 inch



Drum with greater than 6-inch dent



Large (greater than 1/16 inch) cracks in side or edge of flange



Paint and labels on the outside of the flange

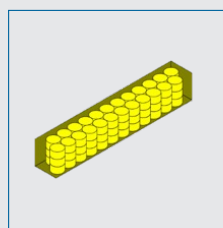


Large (greater than 1/16 inch) cracks in side or edge of flange

Loading Guide:

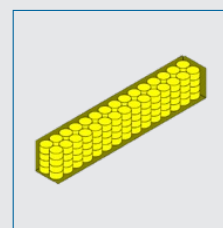
Load reels to truck, stacking reels as shown to the right. Reels must be touching to prevent movement during transport. Overlapping flanges are acceptable. Carrier will secure the reels, strapping the top layer.

50-in Reel

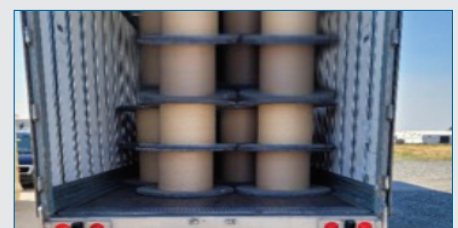


72 reels stacked 3 high

42-in Reel



120 reels stacked 4 high



Plastic Reel Returns



36-in	
Weight	37 lbs
Dimensions	36 x 20 x 20 in
Full Truckload (FTL) Quantity	200 reels
Minimum Return Quantity	180 reels

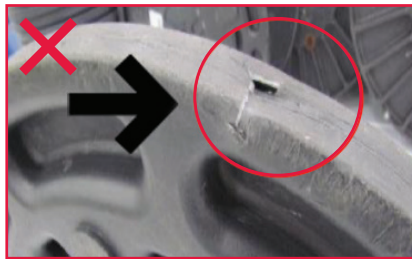


32-in	
Weight	29 lbs
Dimensions	32 x 20 x 20 in
Full Truckload Quantity	228 reels
Minimum Return Quantity	180 reels

Quality Requirements:



Clean, unsoiled reel



Holes in edges or sides of the flange



Holes in edges or sides of the flange



Flanges with dents or warping

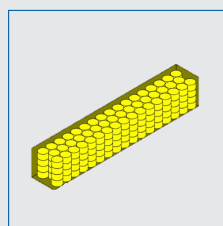


Dents in the drum

Loading Guide:

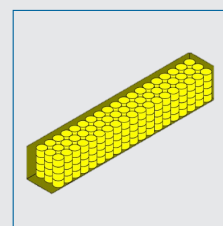
Load reels to truck, stacking reels as shown to the right. Reels must be touching to prevent movement during transport. Overlapping flanges are acceptable. Carrier will secure the reels, strapping the top layer.

36-in Reel



200 reels stacked 4 high

32-in Reel



228 reels stacked 4 high



FAQs

1. What if my reel is not on this list?

- a. If you purchase outside plant cable on wooden or steel reels, please refer to our [Corning Reel Return Recycling Program](#).
- b. If your reels do not meet the qualifications for a Corning Reel Return, please check locally for reel recycling opportunities.

2. Do I need to put the reels on pallets?

No, Corning does not require palletization of returned reels. Please prepare the reels according to the loading guide provided for each reel type.

3. What if my reel does not meet quality specifications?

Damaged reels must be recycled or disposed of at your site.

4. What if I do not have loading equipment at my site?

Contact your Corning Commercial Contact for support.

5. What if I have issues during the reel return process?

Contact your Corning Commercial Contact for support.

6. Is any paperwork needed for the reel pickup drivers?

Yes, your Corning Commercial Contact will schedule the carrier and email you the shipping paperwork (i.e., Bill of Lading). Remember to print two copies; one to keep and one to give the driver.

7. What do I need to do during reel pick up?

- a. Please have your team available at the scheduled time to load the reels into the truck.
- b. Confirm the shipping paperwork matches the load (both quantity and type of reels).
- c. Please give the driver a signed copy of the shipping paperwork.

8. Can I load different reel types on the same truck?

Yes, to return mixed-load shipments, please reach out to your Corning Commercial Contact with the reel types, sizes and quantities prior to scheduling.

9. What if I do not know who my Corning Contact is?

Please contact us at SDR@corning.com with OCSReturns@corning.com in copy and we will be happy to assist.

Be sure to include your name, company name (if you are a contractor, please also include the project owner), and site name.

We will connect you to the correct Corning Contact for reel return requests.

Note: Corning is not responsible in any way whatsoever for damage to persons or property, including property damage or bodily harm or injury, related to the reel return program. Your participation in the program acts as your consent to the terms of the program.



CORNING

Corning Optical Communications LLC • 4200 Corning Place • Charlotte, NC 28216 USA
800-743-2675 • FAX: 828-325-5060 • International: +1-828-901-5000 • www.corning.com/opcomm

Corning Optical Communications reserves the right to improve, enhance, and modify the features and specifications of Corning Optical Communications products without prior notification. A complete listing of the trademarks of Corning Optical Communications is available at www.corning.com/opcomm/trademarks. All other trademarks are the properties of their respective owners. Corning Optical Communications is ISO 9001 certified. © 2023, 2024 Corning Optical Communications. All rights reserved. LAN-3130-AEN / February 2024