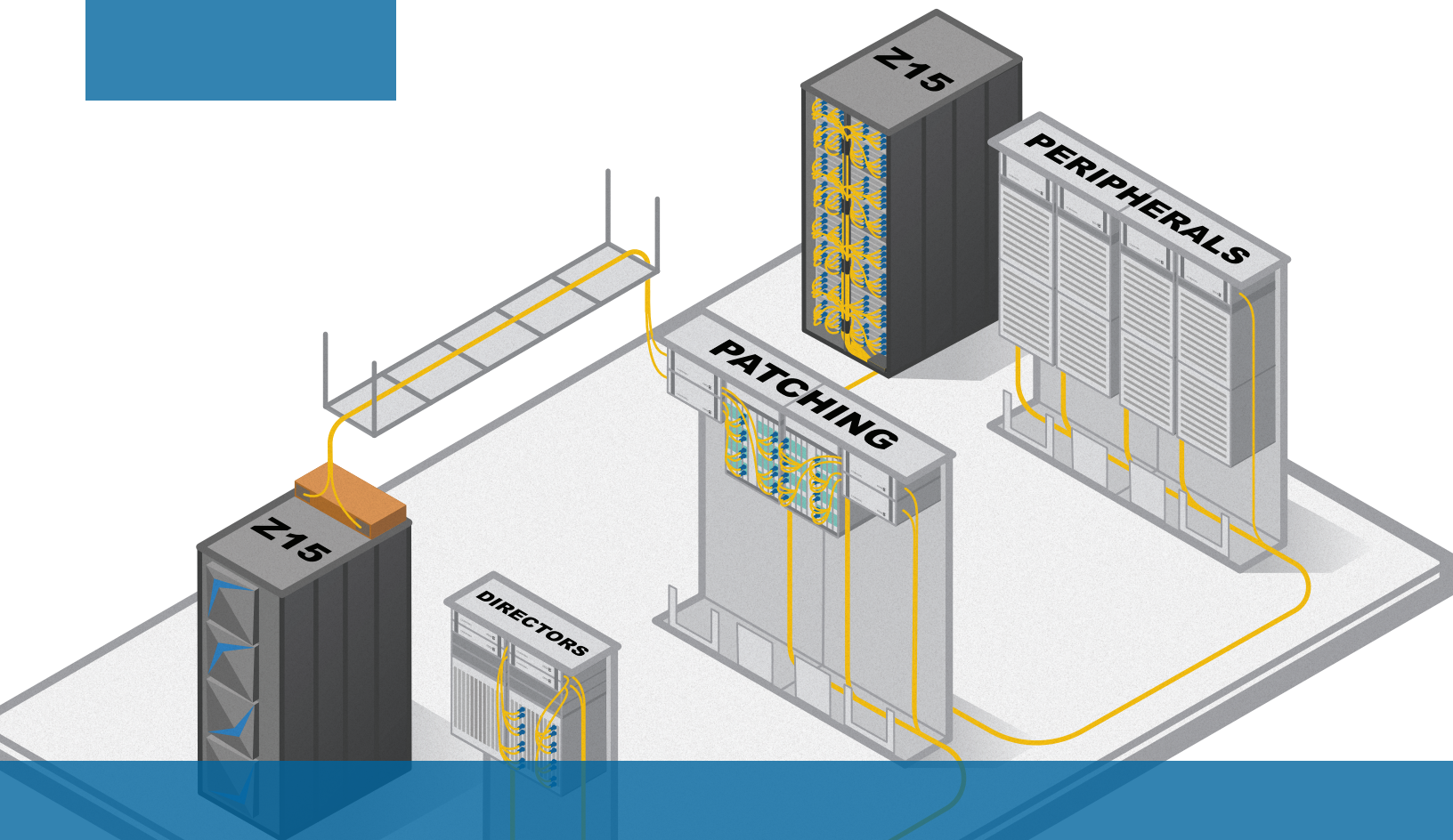


CORNING

WESCO®

ANIXTER



How to Cable the z15 Mainframe

From the mainframe to the directors, Corning solutions are ideally suited for the innovative z15 system. Explore the products that can deliver the flexibility, responsiveness, and security you need to transform your business.

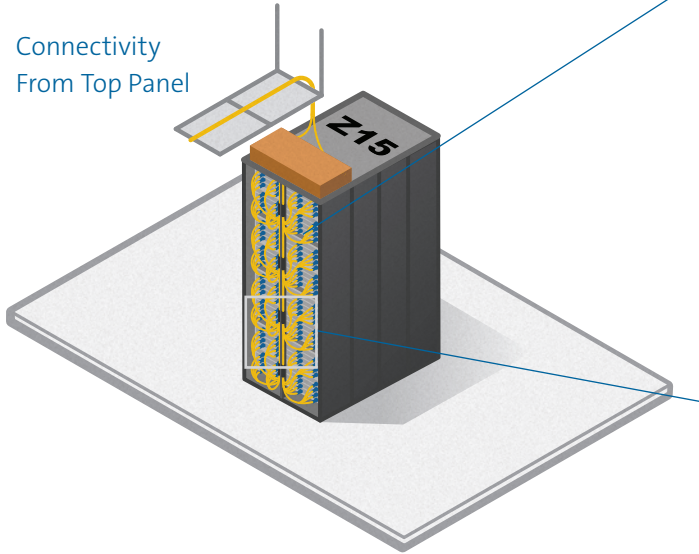
For more information
contact your local distribution rep at
ibmcabling@anixter.com or call 1-877-747-2830

Cabling Sections

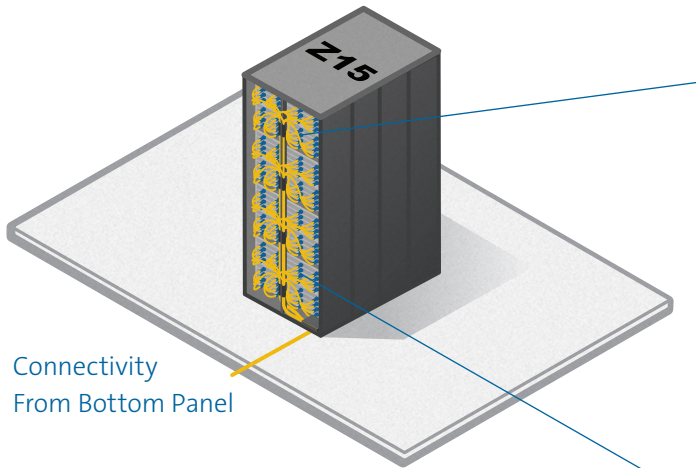
Mainframe

EDGE8® fiber harnesses utilize 8-fiber MTP®/MPO-to-LC designed to minimize cable congestion.

Connectivity
From Top Panel



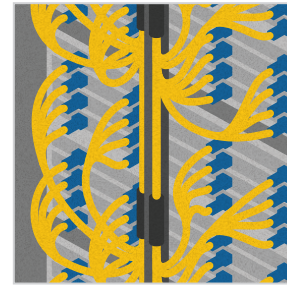
Connectivity
From Bottom Panel



Mainframe – Corning EDGE8® Harness Installation



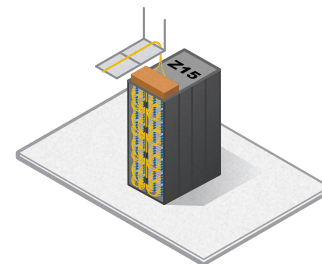
Easily organize Corning harnesses to connect FICON ports (LC) to the MTP®/MPO panel in the z15 mainframe.



Sized to minimize congestion, allowing for easy access to the FICON ports.



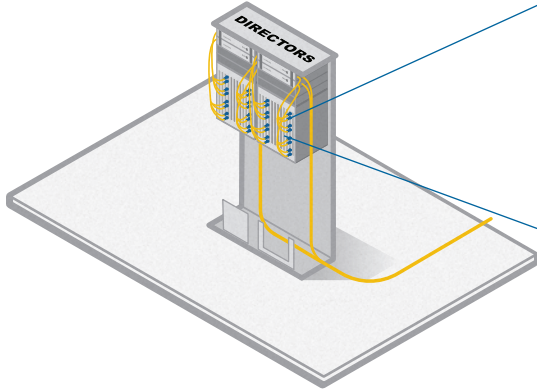
8-fiber harnesses for I/O drawers optimize port mapping with 100% fiber utilization, in contrast to Base-12 harnesses which result in unutilized fibers and no danglers.



Harness utilization in the mainframe allows moves, adds, and changes without jeopardizing electronic ports.

Directors

Port replication housings (PRHs) can be aligned vertically and horizontally to match different director manufacturers' specifications and configurations.



EDGE8® Harness

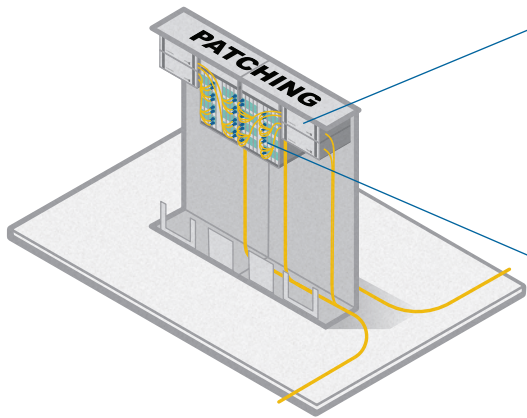


EDGE™ Port Replication Housing



Patching

Modular and scalable components enable connectivity between the mainframe, director, and peripherals.



EDGE8 MTP® to LC Module

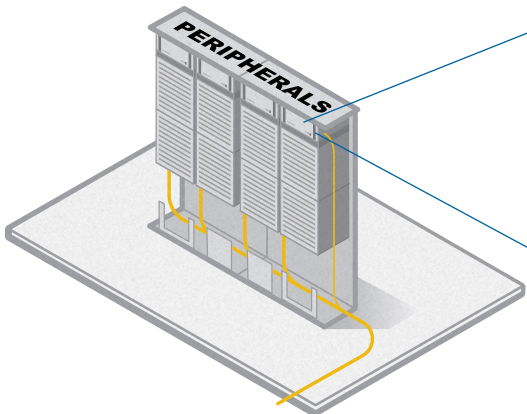


Reverse Polarity Uniboot Duplex Jumper



Peripherals

Optimized solutions for maximizing scalability and minimizing cable congestion.



EDGE8 MTP Adapter Panel

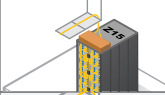







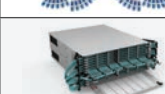







EDGE8 Housing



Products

Let us connect you to the cabling solutions you need to optimize your business and maximize ROI. Our housing units, panels, and mainframes, and harnesses are designed for flexibility, easy installation, and secure performance.

IBM Cabling Products		
Product Name	Features	Image
IBM z15 Mainframe	<ul style="list-style-type: none"> Deliver security, privacy, and resiliency at scale as part of your enterprise-wide cloud infrastructure Enable cloud-native services while extending the value of your most valuable data and application investments 	
01ku546 IBM Panel	<ul style="list-style-type: none"> MTP® coupler along with MTP/MPO harnesses allow for decongestion connectivity in the mainframe Protects FICON ports from multiple matings Enables structured cabling 	
EDGE8® Harness	<ul style="list-style-type: none"> MTP PRO connectors which allow for pinning and polarity changes in the field Corning® CleanAdvantage™ Technology with optimized dust caps Hook-and-strap, spine-relief solution for the IBM z15 mainframe with 7-ft harness and 12-in legs 	
EDGE8 MTP Trunk Cable	<ul style="list-style-type: none"> MTP PRO connectors allow for pinning and polarity changes in the field CleanAdvantage Technology with optimized dust caps Available in single-mode and multimode in 8-288 fiber counts 	
EDGE8 MTP-to-LC Module	<ul style="list-style-type: none"> Provides the interface between the MTP connector on the trunk and the LC duplex jumpers or harnesses 	
Reverse Polarity Uniboot Duplex Jumper	<ul style="list-style-type: none"> Quick-and-easy conversion from a TIA-568 A-B polarity to a TIA-568 A-A polarity without exposing the fibers or needing any tools Insertion loss: 0.5 dB (single-mode and multimode) 	
EDGE8 MTP Adapter Panel	<ul style="list-style-type: none"> Enables a pay-as-you-grow approach Available in 1-4 adapters per panel 	
8-Fiber MTP PRO Jumper	<ul style="list-style-type: none"> Reduce risk with easy-to-change pinning and polarity in the field Seamless migration to higher data rates in the data center when used in conjunction with our EDGE8 pinned trunks 	
Fiber Cable Assembly OS2 LC UPC duplex to LC UPC duplex	<ul style="list-style-type: none"> Configure high-fiber-count assemblies with connector type, fiber count, fiber type, cable length, and unit of measurement Fiber counts range from 2 to 144 	
EDGE8 Housing	<ul style="list-style-type: none"> Available in 1U, 2U, and 4U Flexibility of installing both EDGE8 solutions or Plug & Play™ systems cable designs 	
EDGE™ Port Replication Housing	<ul style="list-style-type: none"> EDGE port replication housing is optimized to support storage area networks (SAN) and local area network (LAN) switches Modular construction allows line card panels to be installed horizontally or vertically, and optional blank panels provide customization to match unique vendor equipment layouts. 	
EDGE8 Housing, FX Mounting Bracket	<ul style="list-style-type: none"> EDGE8-CP12-PRH Port replication trays designed for EDGE8 modules or EDGE8 adapter panels Base-8 configuration 	
Port Replication Housing Accessory Trays with LC-to-LC Panels	<ul style="list-style-type: none"> EDGE-CP96-AE PRH Port replication housing trays with LC-to-LC panels built in Base-8 construction 	
Plug & Play Accessory Bracket Plug & Play Systems	<ul style="list-style-type: none"> 0-U Rack mount 12 inches for 12 U-clips 	

CORNING

Corning Optical Communications LLC • 4200 Corning Place • Charlotte, NC 28216 USA
800-743-2675 • FAX: 828-325-5060 • International: +1-828-901-5000 • www.corning.com/opcomm

Corning Optical Communications reserves the right to improve, enhance, and modify the features and specifications of Corning Optical Communications products without prior notification. A complete listing of the trademarks of Corning Optical Communications is available at www.corning.com/opcomm/ trademarks. All other trademarks are the properties of their respective owners. Corning Optical Communications is ISO 9001 certified. © 2020 Corning Optical Communications. All rights reserved. ANX-224-AEN / December 2020