

CORNING

Centrix™ System

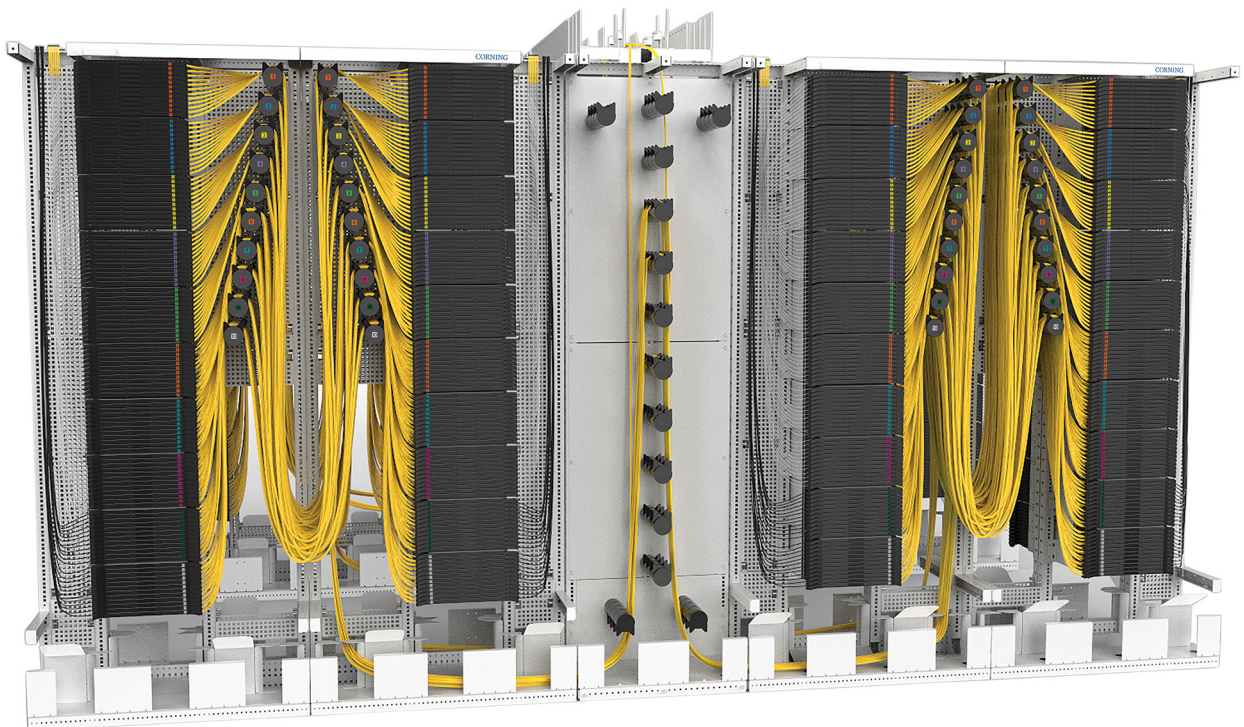
Centrix™ System Introduction

The central office, or headend, is the brain of your network and must address sophisticated infrastructure challenges to meet today's explosion of data services.

We interviewed more than 3,000 central offices and data centre operators in all regions and the outcome remained the same – the infrastructure must be reliable, high-quality, flexible, manageable, scalable, and visible to support a 24/7, year-round operation.

The Corning Centrix™ system is a high-density optical cabling solution that simplifies installation and improves the performance in the central office environment. Centrix provides an increased system density, when compared to traditional splice or preterminated systems, and offers the highest port density in the market. Corning® ClearCurve® bend-optimised fibre is the core element ensuring reliability when designing custom-engineered components – thanks to its significant reduction in macrobend loss, even in the most challenging bend scenarios. This technology enables Corning to provide significantly greater density across the range, combined with a simple design and integration for electronic areas within the central office. In addition, preterminated components allow for reduced installation time and faster moves, adds, and changes (MACs).

With reliability being critical, you need products that optimise your network's capabilities today and can scale for the future.



Centrix™ System

Contents

Single Cabinets	4
Dual Cabinets	6
Quad Cabinets	8
Cabinet Accessories	10
Housings	16
Stubbed Housings	17
Stubbed Cassettes	18
Loaded Housings	20
Empty Housings	21
Splice Cassettes	22
Patch Cassettes	23
Splitter Cassettes	24
Coarse Wavelength Division Multiplexing (CWDM) Cassettes	26
MTP® Modules	27
Stubbed MTP Modules	28
Patch Cords	29

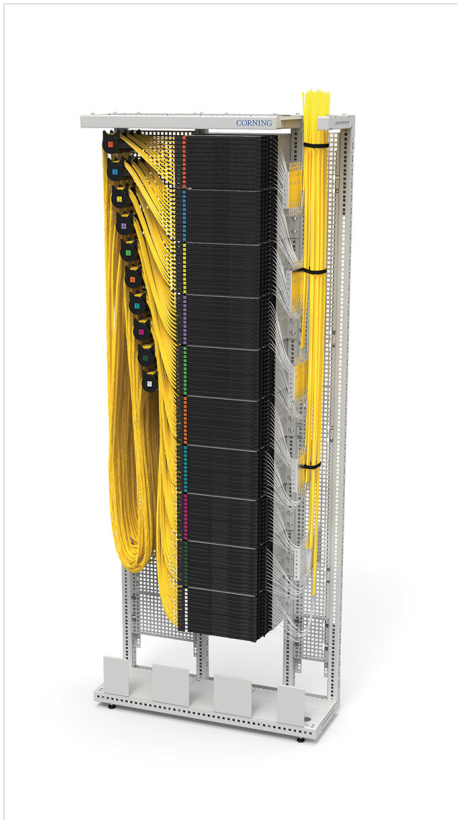


Centrix™ Single Cabinets

Centrix™ single cabinets provide space for up to 120 Centrix cassettes, with a maximum capacity of 4,320 LC or 2,880 SC single-fibre ports. All functions are accessible from the front of the cabinet. Patch cord management enables in-cabinet cross-connects with a single patch cord length of 4 m. Feeder cables can enter the cabinet from the top and bottom. The bottom channel function allows for easy routing of patch cords across cabinets in a row. The cabinet comes assembled for fast deployment.

Available Options:

- Single cabinet (cross-connect application)
- Single cabinet (equipment interconnect)
- Single cabinet (splice concentrator)



Single cabinet without protection



Single cabinet with protection and bottom channel



Single cabinet splice concentrator

Centrix™ Single Cabinets



Single cabinet with right-side cable entry

Single cabinet with left-side cable entry

Single equipment interconnect cabinet with right-side cable entry and dual patch cord manager

Splice concentrator single cabinet with left- and right-side cable entry

Features	Benefits
All front access	Cable strain-relief plates included
40 rack units	Numbered cable routing hubs included
Supports up to 4,320 splices and 120 cassettes within a 0.27 m ² footprint	Open-cabinet version available
Integrated patch cord management	Version with bottom channel available
Single 4-m patch cord for in-frame cross-connect	Full protection with long doors/walls available
Quick installation feature for Centrix housings	Assembled or non-assembled (flat-pack) versions available
Cable entry on left, right, or both sides	

Ordering Information

CTX - CAB - F

1
2
3
4
5
6
7

1 Select frame height.

22 = 2,200 mm
7F = 7 ft

2 Select width.

09 = 900 mm
12 = 1,200 mm (equipment interconnect)

3 Select walls.

N = No side walls, no rear wall
S = With side walls only
P = With side walls and rear wall
R = Rear wall only

4 Select doors.

N = No doors
G = Doors with Acrylglas, with standard/triangular lock
M = Doors, full metal, with standard/triangular lock
F = Doors with Acrylglas window with wing knob quarter turn lock
K = Doors, full metal with wing knob quarter turn lock



Triangular Lock



Wing Knob Quarter Turn Lock

5 Select cable entry side.

L = Cable entry on the left
R = Cable entry on the right
B = Cable entry on both left and right sides

6 Select cabinet pre-installation.

A = Assembled cabinet
N = Non-assembled cabinet (flat pack)

7 Select bottom channel option.

B = Bottom channel pre-installed
N = No bottom channel (closed bottom area)

Ordering Example:

[CTX-CAB-F2209NNRNB](#) → Front-Access Single Cabinet, 2200×900×300 mm (H×W×D), cable entry on right side, without walls and door, bottom channel, unassembled

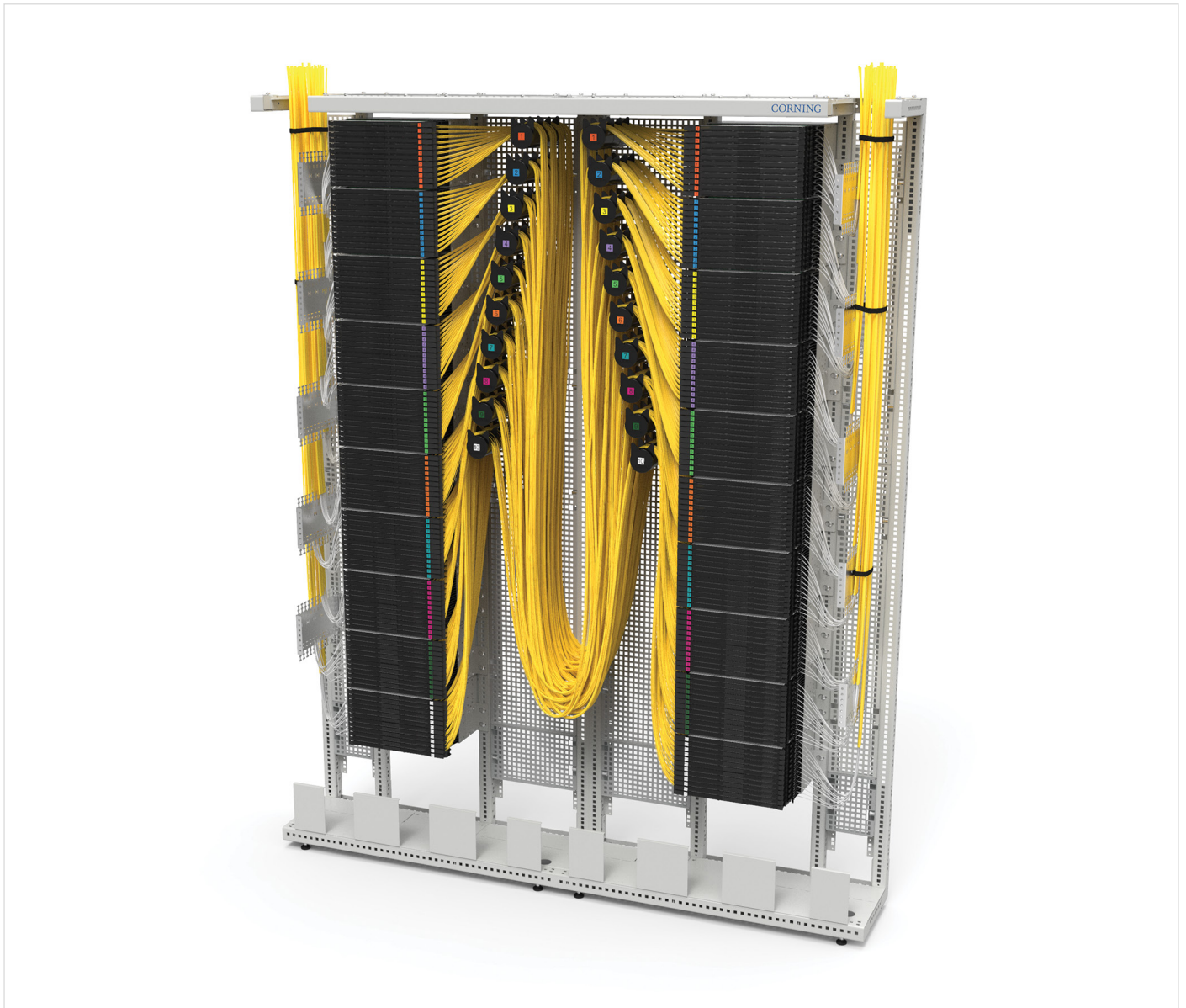


Centrix™ Dual Cabinets

The Centrix™ dual cabinet (back-to-back or side-to-side) provides space for up to 240 Centrix cassettes, with a maximum capacity of 8,640 LC or 5,760 SC single-fibre ports. Patch cord management enables in-cabinet cross-connects with a single patch cord length of 4 m. Feeder cables can enter the cabinet from the top and bottom. The bottom channel function allows for easy routing of patch cords across cabinets in a row. The cabinet comes assembled for fast deployment.

Available Options:

- Side-by-side
- Back-to-back



Side-by-side dual cabinet

Centrix™ Dual Cabinets



Back-to-back dual cabinet without doors and walls



Back-to-back dual cabinet with doors and side walls and bottom channel



Side-by-side dual cabinet without doors and walls



Side-by-side dual cabinet with doors and walls and bottom channel

Features	Benefits
Back-to-back and side-to-side configurations available	Cable strain-relief plates included
80 rack units	Numbered cable routing hubs included
Supports 8,640 LC or 5,760 SC ports per cabinet within a 0.54 m ² footprint	Open-cabinet version available
Integrated patch cord management	Version with bottom channel available
Single 4-m patch cord for in-frame cross-connect	Full protection with long doors/walls available
Quick installation feature for Centrix housings	Assembled or non-assembled (flat-pack) versions available
Cable entry on left, right, or both sides	

Ordering Information

CTX - CAB2F

B

1
2
3
4
5
6
7

1 Select frame height.

22 = 2,200 mm
7F = 7 ft

2 Select width.

09 = 900 mm
18 = 1,800 mm

3 Select walls.

N = No side walls, no rear wall
S = With side walls only
P = With side walls and rear wall*
R = Rear wall only*

*Selection is only applicable for side by side (1,800 mm width) configuration

4 Select

N = No doors
G = Doors with Acrylglas, with standard/triangular lock
M = Doors, full metal, with standard/triangular lock
F = Doors with Acrylglas window with wing knob quarter turn lock
K = Doors, full metal with wing knob quarter turn lock

doors.

5 Cable entry side.

B = Cable entry on both left and ride sides

6 Select cabinet pre-installation.

A = Assembled cabinet
N = Non-assembled cabinet (flat pack)

7 Select bottom channel option.

B = Bottom channel pre-installed
N = No bottom channel (closed bottom area)

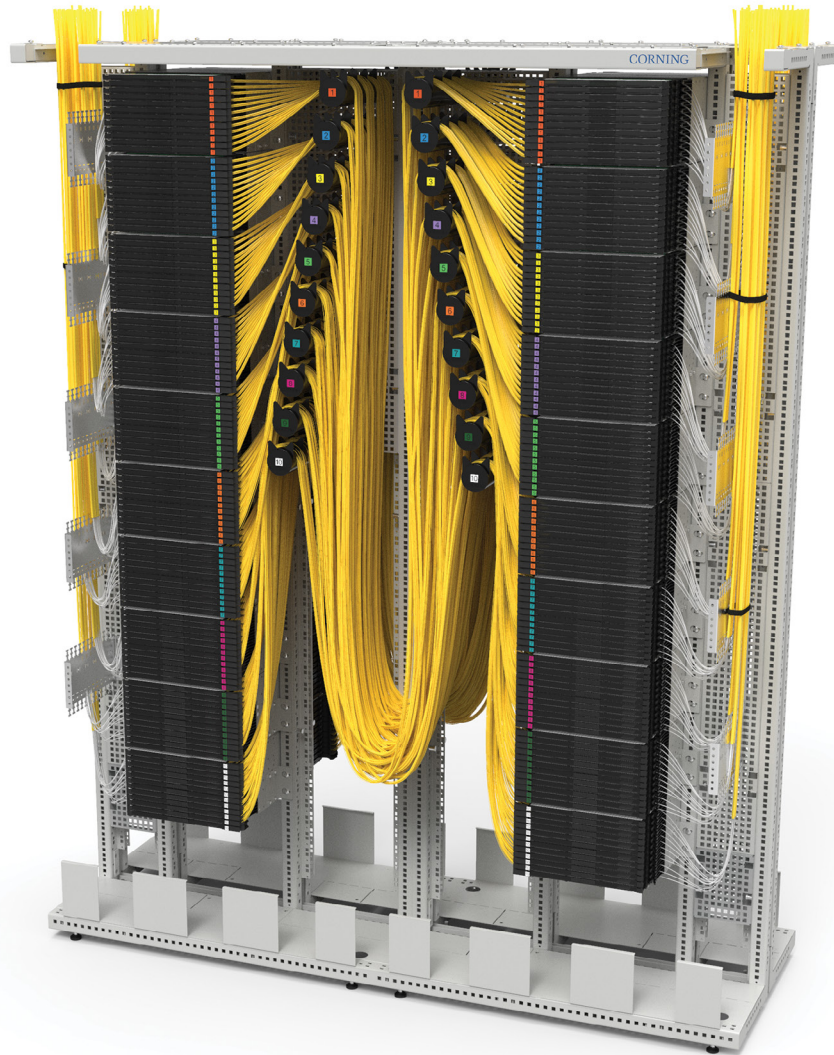
Ordering Example:

CTX-CAB2F2218PGBNB → Front-Access Dual Cabinet, 2200×1800×300 mm (H×W×D), cable entry on both sides, walls, door with acrylic glass window, bottom channel, unassembled



Centrix™ Quad Cabinets

The Centrix™ Quad Cabinet provides space for up to 480 Centrix cassettes, with a maximum capacity of 17,280 LC or 11,520 SC single-fibre ports. Patch cord management enables in-cabinet cross-connects with a single patch cord length of 4 m. Feeder cables can enter the cabinet from the top and bottom. The bottom channel function allows for easy routing of patch cords across cabinets in a row. The cabinet comes assembled on two pallets for fast deployment.



Quad cabinet

Centrix™ Quad Cabinets



Quad cabinet without protection



Quad cabinet with protection and bottom channel

Features and Benefits

Quad configuration

160 rack units

Supports 17,280 LC or 11,520 SC ports per cabinet within a 1.08 m² footprint

Single 4-m patch cord for in-frame cross-connect

Quick installation feature for Centrix housings

Cable entry on left, right, or both sides

Cable strain-relief plates included

Numbered cable routing hubs included

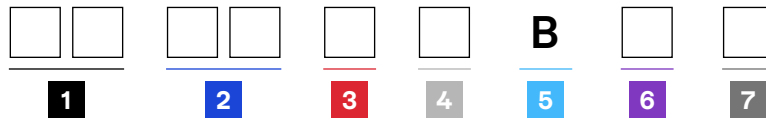
Open-cabinet version available

Version with bottom channel available

Full protection with long doors/walls available

Ordering Information

CTX - CAB4F



1 Select frame height.

22 = 2,200 mm
7F = 7 ft

2 Select width.

18 = 1,800 mm

3 Select walls.

N = No side walls, no rear wall
S = With side walls only

4 Select doors.

N = No doors
G = Doors with Acrylglas, with standard/
triangular lock
M = Doors, full metal, with standard/
triangular lock
F = Doors with Acrylglas window with wing
knob quarter turn lock
K = Doors, full metal with wing knob
quarter turn lock

5 Select cable entry side.

B = Cable entry on both left and
right sides

6 Select cabinet pre-installation.

A = Assembled cabinet
N = Non-assembled cabinet
(flat pack)

7 Select bottom channel option.

B = Bottom channel pre-installed
N = No bottom channel (closed
bottom area)

Ordering Example:

CTX-CAB4F2218SSGBNB → Front-Access Quad Cabinet, 2200×1800×600 mm (H×W×D),
cable entry on both sides, walls, door with acrylic glass window, bottom channel, unassembled



Centrix™ Cabinet Accessories



Doors (short) for cabinet with bottom channel



Doors (long) for cabinet without bottom channel



Doors for cabinet without bottom channel



Doors for dual side-by-side cabinet without bottom channel

The Centrix™ cabinet door kits offer the best protection against unauthorised access to the patch areas of the cabinets. With hang and swing doors, there are different access options available to suit the environment. Long and short doors have a bottom channel function for easy routing of patch cords across cabinets in a row.

Available Options:

- 900 mm single cabinets
- 1,200 mm equipment interconnect cabinets
- 1,800 mm dual and quad cabinets

Ordering Information

CAB - DR 22

1 **2** **3** **4** **5**

1 Select frame height.

22 = 2,200 mm

2 Select width.

09 = 900 mm
12 = 1,200 mm
18 = 1,800 mm

3 Select door type.

H = Hanging door
S = Swiveling door

4 Select doors.

N = No doors
G = Doors with Acrylglas, with standard/ triangular lock
M = Doors, full metal, with standard/ triangular lock
F = Doors with Acrylglas window with wing knob quarter turn lock
K = Doors, full metal with wing knob quarter turn lock

5 Select door length.

B = Short door*
N = Long door
*Short door enables bottom channel access

Ordering Example:






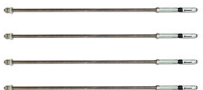
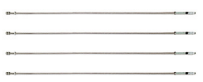
CAB-DR2209SGN → Door set 2200mm, 1x600 mm swiveling door with acrylic glass + 1x300 mm swiveling metal door, long






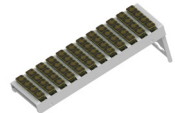





Centrix™ Cabinet Accessories

Part Number	Product Description	Units per Delivery	
CABFKT2209PGB	Door, Side, and Rear Wall Kit for 2,200 mm cabinet, short	1/1	
CABFKT2209PGN	Door, Side, and Rear Wall Kit for 2,200 mm cabinet, long	1/1	
CAB-WL2203SB	Side Wall Kit for 2,200 mm cabinet, short	1/1	
CAB-WL2203SN	Side Wall Kit for 2,200 mm cabinet, long	1/1	
CAB-WL2209RN	Rear Wall Kit for cabinet 2,200 x 900 mm	1/1	
CAB-WL2212RN	Rear Wall Kit for cabinet 2,200 x 1,200 mm	1/1	
CAB2DR2218HMN	Hanging Door Set 2,200 mm, 3 x 600 mm, full length	1/1	




Centrix™ Cabinet Accessories (Continued)

Part Number	Product Description	Units per Delivery	
CAB-BG-19D	Adjustable Top Bridge for connecting of cabinet rows 128-190 cm	1/1	
OLM-CAB-F2206NNAB	Overlength Management Frame, 2,200 x 600 x 300 mm (H x W x D), no walls, no doors, bottom channel, top bridge interface, assembled	1/1	
CAB-FC	Screw Set for back-to-back or side-by-side cabinet connection	1/1	
CAB-MTWL	Cabinet Wall-Mounting Kit	1/1	
CAB-MTRF-00	Raised Floor-Mounting Kit – tile	1/1	
CAB-MTRF-05	Raised Floor-Mounting Kit – 0.5 m	1/1	
CAB-MTRF-12	Raised Floor-Mounting Kit – 1.2 m	1/1	







Centrix™ Cabinet Accessories (Continued)

Part Number	Product Description	Units per Delivery	
CAB-SR-CBL	Strain-Relief Bracket for loose tube cable	1/1	
CAB-SR-SPP	Strain-Relief Bracket for up to 12 mini ducts	1/1	
CAB-SR-TRK	One Strain-Relief Bracket for trunk cable	1/1	
CAB-BKT-48MTP	Centrix™ MTP®/MPO Adapter Bracket, 48 ports	1/1	
CTX-SERVICE-BKT	Centrix Service Bracket	1/1	
CAB-WS	Cabinet Workshelf	1/1	
CAB-TT-TOOL	Zipper Tool (cutting transition tubes and feeding in the fibre)	1/1	
CAB-TT-050M	Set with 50 m of transition tubes	1/1	
CAB-TC	Tube Connectors (24 x 1-1, 2-1, 3-1)	1/1	

Centrix™ Cabinet Accessories (Continued)

Part Number	Product Description	Units per Delivery	
CAB-PS12F1610A	Power Distribution Unit with 12 F sockets	1/1	
CAB-HB	Routing Hub, Four Segments, One Cover, including coloured number sticker	1/1	
CAB-LB-S1210	Cabinet Labels, 12 x 1-10, coloured, small	1/1	
CAB-RF01	Brushes for patch cord area	1/1	

Centrix™ Cabinet Accessories (Continued)

Part Number	Product Description	Units per Delivery	
<u>CTX-BKT21-1U-SYM</u>	Symmetric 1U Centrix Bracket, 21 in	1/1	
<u>CTX-BKT21-2U-SYM</u>	Symmetric 2U and 4U Centrix Bracket, 21 in	1/1	
<u>CTX-BKT23-1U-SYM</u>	Symmetric 1U Centrix Bracket, 23 in	1/1	
<u>CTX-BKT23-2U-SYM</u>	Symmetric 2U and 4U Centrix Bracket, 23 in	1/1	
<u>CTX-BKT19-1U-ASY</u>	Asymmetric 1U Centrix Bracket, 19 in	1/1	
<u>CTX-BKT19-2U-ASY</u>	Asymmetric 2U and 4U Centrix Bracket, 19 in	1/1	

Centrix™ Housings

Centrix™ housings provide industry-leading, ultra-high-density connectivity when combined with Centrix splice, patch, splitter, WDM, MTP®, and other configurations of pre-terminated cassettes. With the unique Centrix design, all cassettes are exchangeable – sliding into the housing to make real structured patch cable management possible, while providing unprecedented finger access without the need for tools or any other accessories. The various range of mounting brackets provide flexible installation options for 19-, 21-, and 23-in cabinet requirements. Centrix cabinets enable fast and easy installation of the housing through its quick-mount feature.

Loaded and stubbed housings enable faster network deployments through reduced installation time and reduced packaging. Easy cable deployment and quick installation features for the pre-connectorised housing in the Centrix cabinet ensure safe, on-demand enhancements of existing structures at maximum port density.

Stubbed housings are configurable for stub lengths up to 100 m in 5 m steps, and up to 250 m in 10 m steps. The cable entry side of the housing will be matched with the orientation of the cabinet.

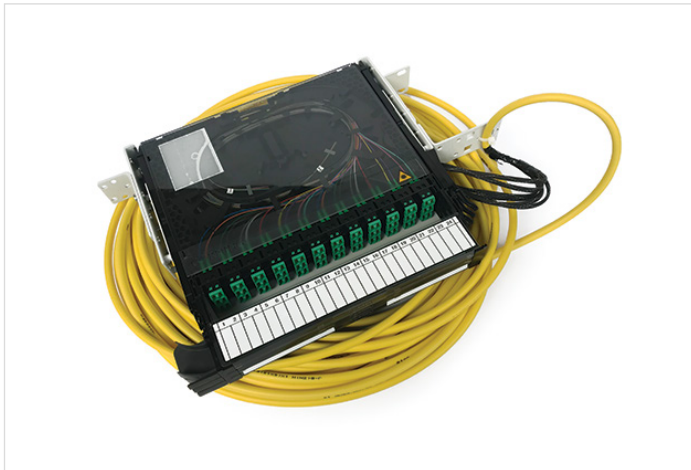
Fibre Capacity

Adapter Type	Terminations per Cassette	Terminations per Housing Size			Terminations per Frame
		1 RU	2 RU	4 RU	
SC	12, 24	36, 72	72, 144	144, 288	Up to 2,880
LC	12, 24, 36	36, 72	72, 144, 216	144, 288, 432	Up to 4,320
LSH	12	36	72	144	1,440



1U, 2U, and 4U housings with LC APC adapters

Centrix™ Stubbed Housings



Stubbed 1U housing



Stubbed 2U housing

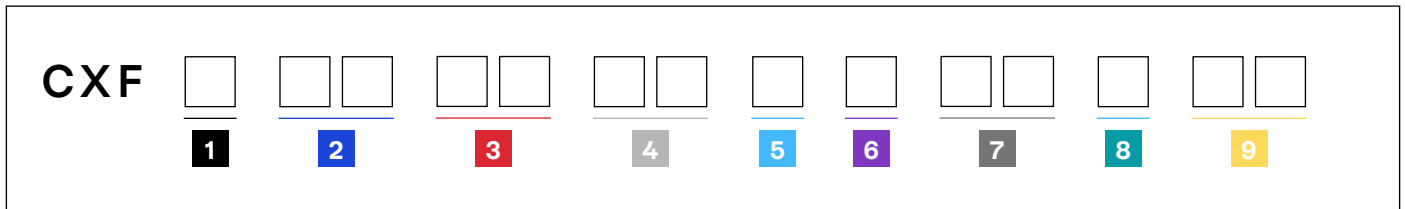
Stubbed housings enable fast network deployments.

Stubbed housings are configurable for stub lengths up to 100 m in 5 m steps, and up to 250 m in 10 m steps. The cable entry side to the housing will be matched with the orientation of the cabinet.

Features and Benefits

- One end connectorised, housed, and tested
- HD cable, indoor and outdoor
- Corning® SMF-28® Ultra fibre – low loss, bend insensitive, G.652.D compliant
- Quick-mount feature on the housing

Ordering Information

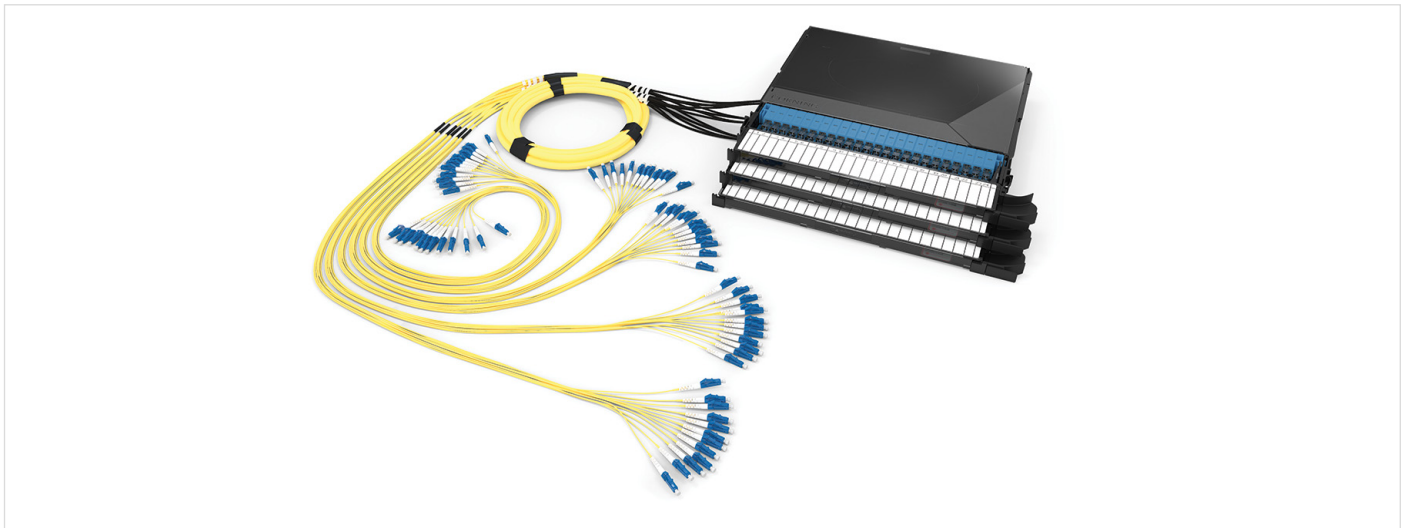


- | | | |
|--|---|---|
| <p>1 Select cassettes housing.
 3 = 1U, 3 cassettes positions
 6 = 2U, 6 cassettes positions
 C = 4U, 12 cassettes positions</p> <p>2 Select fibre count per cassette.
 12 = 12 fibre
 24 = 24 fibre
 36 = 36 fibre, only LC</p> <p>3 Select adapter type.
 3C = SC UPC
 6C = SC APC
 A9 = LC UPC
 B3 = LC APC</p> <p>4 Select connector type, far end.
 58 = SC UPC
 44 = SC APC
 02 = LC UPC
 22 = LC APC
 NN = None</p> | <p>5 Select leg length.
 K = 60 cm
 (Other lengths available on request.)</p> <p>6 Select fibre colour code of the cable.
 T = Telcordia
 V = VDE</p> <p>7 Select cable type (Base 12)*
 Up to 432 F:
 L2 = Loose tube (indoor/outdoor)
 S2 = MIC™ 250 2.0 indoor
 Up to 288 F:
 M2 = MiniXtend® outdoor</p> | <p>8 Select cable entry direction, viewed from the front.
 L = Left
 R = Right
 B = Back (only for 19-in cabinets)</p> <p>9 Select stubbed cable length.
 05-95 = 5-95 m
 (Up to 100 m in 5 m increments)
 A0-A9 = 100-190 m
 Z0-Z5 = 200-250 m
 (Stubbed cables beyond 100 m are available in 10 m increments.)
 Maximum length of 250 m</p> |
|--|---|---|

*See cable type sheet for details.



Centrix™ Stubbed Cassettes



Stubbed cassettes

Stubbed cassettes enable fast network deployments.

Stubbed cassettes are configurable for stub lengths up to 100 m in 5 m steps, and up to 250 m in 10 m steps. The cable entry side to the housing will be matched with the orientation of the cabinet.

Features and Benefits

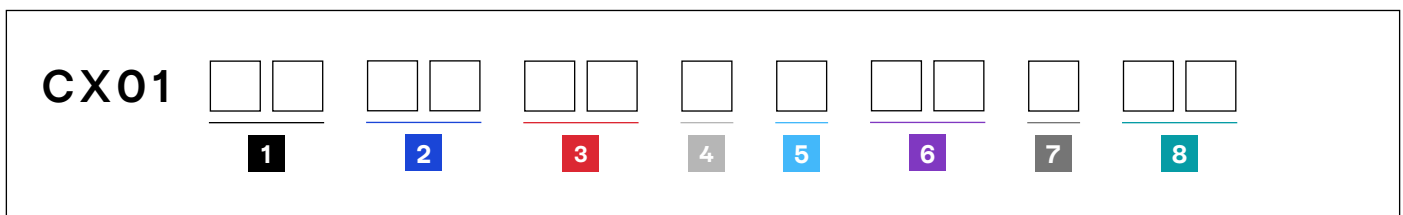
One end connectorised, housed, and tested

HD cable, indoor and outdoor

Corning® SMF-28® fibre – low loss, bend insensitive, G.652.D compliant

Quick-mount feature on the housing

Ordering Information



1 Select fibre count per cassette.

- 12 = 12 fibres
- 24 = 24 fibres
- 36 = 36 fibres, only LC

2 Select adapter type.

- 3C = SC UPC
- 6C = SC APC
- A9 = LC UPC
- B3 = LC APC

3 Select connector type, far end.

- 58 = SC UPC
- 44 = SC APC
- 02 = LC UPC
- 22 = LC APC
- NN = None

4 Select leg length.

- K = 60 cm
- (Other lengths available on request.)

5 Select fibre colour code of the cable.

- T = Telcordia
- V = VDE

6 Select cable type (Base 12)

- MI = MIC™ central tube cable
- MP = MPC central tube cable
- MU = MUC central tube cable

7 Select cable entry direction, viewed from the front.

- L = Left
- R = Right
- B = Back (only for 19-in cabinets)

8 Select stubbed cable length.

- 05-95 = 5-95 m
- (Up to 100 m in 5 m increments)
- A0 - A9 = 100-190 m
- Z0 - Z5 = 200-250 m
- (Stubbed cables beyond 100 m are available in 10 m increments.)
- Maximum length of 250 m



Cable Sheet for Stubbed Housings and Cassettes

This sheet shows the cable types available for each standard fibre count, as well as the typical cable catalogue number, outer diameter, and pulling strength.

All indoor and indoor/outdoor cables are EU Construction Products Regulation (CPR) rated.

Corning has a large portfolio of cable types. For options not listed below, please contact Customer Care at 00800 2676 4641 or cc.emea@corning.com.

Loose Tube

Fibre Count*	Number of Cassettes Required for Various Fibre Counts per Cassette			Typical Catalogue Number (*1) Outer Diameter Strength (N)		
	12F per Cassette	24F per Cassette	36F per Cassette	S2 – MIC™ 250 2.0 cable 12 Fibres per Subunit	M2 – MiniXtend® Cable with Binderless FastAccess™ Technology 12 Fibres per Subunit	L2 – Loose Tube Indoor/Outdoor 12 Fibres per Subunit
36	3	N/A	1	036ZDZ-T2220E2C 7.2 mm 450N	036ZM4-T3F22AMX' 5.4 mm 350N	036ZRU-T7120AYL 10.7 mm 4,000N
72	6	3	2	072ZDZ-T2220E2C 8.3 mm 450N	072ZM4-EB766AMX' 5.4 mm 350N	072ZRU-T7120AYL 10.7 mm 4,000N
144	12	6	4	144ZDZ-T2220E2C 11.3 mm 450N	144ZM4-EB856AMX' 8.1 mm 350N	144ZRU-T7120AYL 15.1 mm 4,000N
288	N/A	12	8	288ZDZ-T2220E2C 15.2 mm 450N	288ZM4-EA740ASA 11.6 mm 900N	288ERU-T7122AYL 17.6 mm 4,000N
432	N/A	N/A	12	432ZDZ-T2220E2C 17.6 mm 450N	On demand	432ERY-T3122H2G 22.0 mm 2,700N

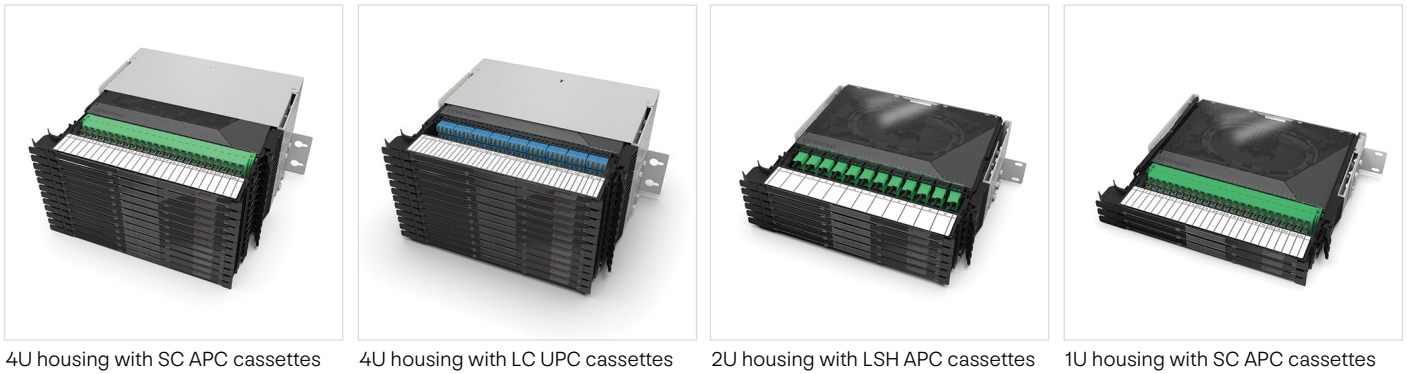
Central Tube

FC	MP I-MPC Central Tube Cable Black or Slate TB3	MI I-MIC Central Tube Cable White TB3	MU I-MUC Central Tube Cable Black TB3
12	012Z8J-36125ESL 8.7 mm 2,700N	012Z8Z-36125EWH 6.2 mm 800N	012E8X-32125ENP 6.3 mm 1,100N
24	024Z8J-32120E2G 10.3 mm 2,700N	024Z8Z-36125EWH 8.0 mm 1,000N	024Z8X-32125E2C 8.1 mm 1,500N

*Corning reserves the right to choose a different cable, as long as the key parameters are maintained. Key parameters are fibre mode, cable colour, and flame rating.



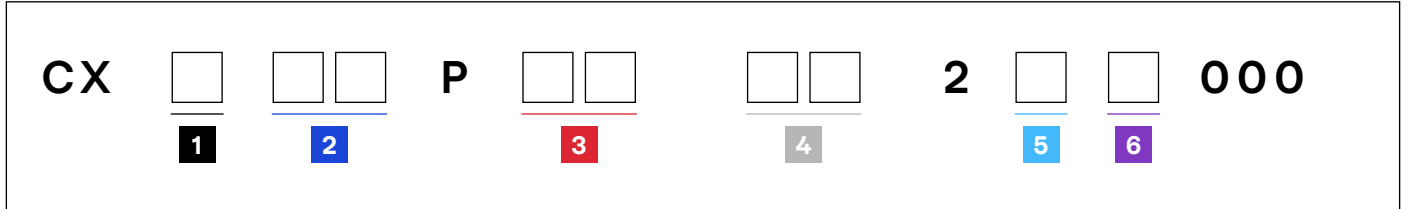
Centrix™ Loaded Housings



Centrix™ loaded housings are available with Centrix splice cassettes in different configurations. The cassettes are loaded with adapters, single-fibre pigtailed, and splice accessories already deployed in the housing. This allows for fast installation time and reduced packaging.

Features	Benefits
Loaded housing ready for splicing	Front and top labelling for easy identification
Faster system setup and reduced packaging materials	Captive and transparent covers on both sides of the cassette
300 mm depth for installation in TELCO cabinets	Separated bare fibre and tube slack storage up to 2 m by design
Easy port access and identification	Multiple tube entry from the rear or both sides of the cassette
Integrated patch cord guide supports patch management	

Ordering Information



1 Select Centrix housing.
 1 = 1U, 3 cassette positions
 2 = 2U, 6 cassette positions
 4 = 4U, 12 cassette positions

3 Select fibre count per cassette.
 12 = 12 fibres (LC, SC, or LSH)
 24 = 24 fibres (LC or SC)
 36 = 36 fibres (LC)

5 Defines fibre type.
 R = Single-mode
 Q = OM4

2 Select total fibre count.
 36 = 36
 72 = 72
 A8 = 108
 E4 = 144
 M6 = 216
 U8 = 288
 WW = 432

4 Select adapter code.
 6C = SC APC
 3C = SC UPC
 B3 = LC APC
 A9 = LC UPC
 P1 = LSH APC
 P2 = LSH UPC
 AD = LC duplex

6 Select pigtail type.
 J = Ribbon
 C = Crimp
 H = Heat shrink

Ordering Example:
CX4WWP36-B3-2RH000 → loaded housing 4U, 12 cassettes, 36xLC/APC adapters + pigtails, 432 ports, heat shrink splice protectors



Centrix™ Empty Housings



1U housing



2U housing



4U housing

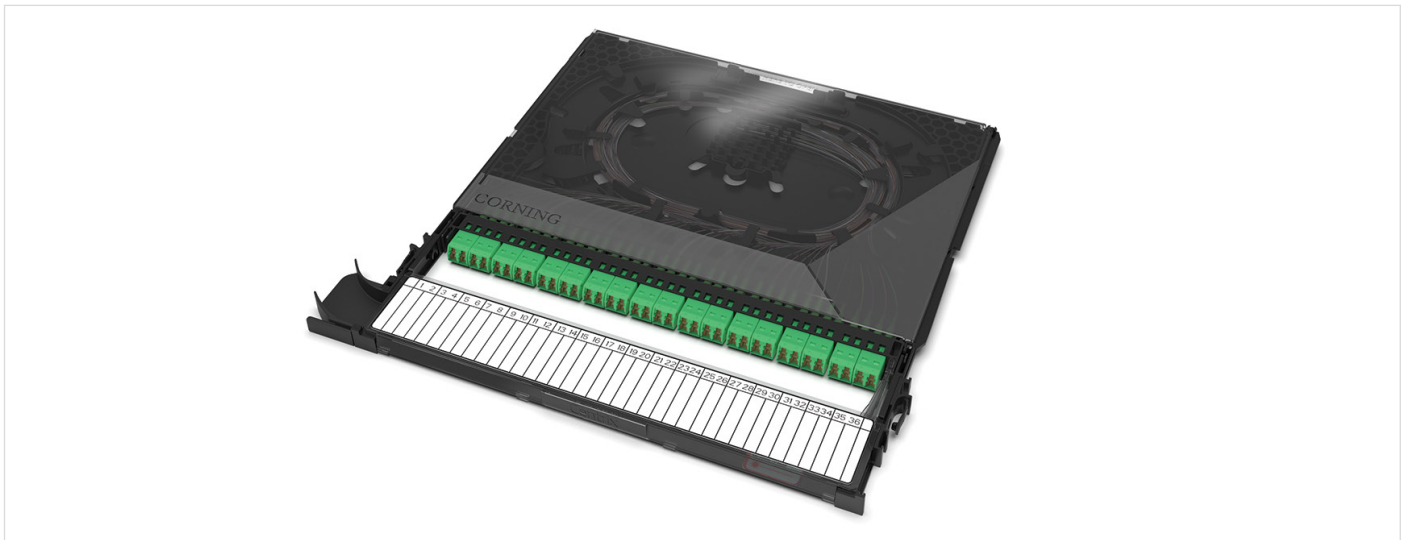
Empty Centrix™ housings are available with Centrix splice cassettes in different configurations. The cassettes are loaded with adapters, single-fibre pigtails, and splice accessories already deployed in the housing. This allows for fast installation time and reduced packaging.

Features	Benefits
300 mm depth for installation in TELCO cabinets	Captive and transparent covers on both sides of the cassette
Easy port access and identification	Separated bare fibre and tube slack storage up to 2 m by design
Integrated patch cord guide supports patch management	Multiple tube entry from the rear or both sides of the cassette
Front and top labelling for easy identification	

Ordering Information

Part Number	Height Unit	Dimensions (W x D x H)	Packaging Dimensions (W x D x H)	Shipping Weight
CTX-S1U	1U	310 x 254 x 44.5 mm	530 x 350 x 55 mm	1.7 kg
CTX-S2U	2U	310 x 254 x 89 mm	530 x 350 x 100 mm	2.5 kg
CTX-S4U	4U	310 x 254 x 178 mm	520 x 265 x 500 mm	3.2 kg

Centrix™ Splice Cassettes



36-Fibre LC APC splice cassette

The Centrix™ splice cassette provides single-fibre ports with LC, SC, or LSH connectivity. The cassette is loaded with adapters, coloured single-fibre or ribbon pigtailed, splice organizer, and protectors. A drop handle provides fibre port protection and patch cord labelling on front and top of the cassette allows for easy identification. The cassette can slide into Centrix housings and is secured with a latch mechanism. The patch cord guide is on the left side of the cassette, but can be easily changed to the right. The transparent and captive top and bottom covers enable easy handling and visual inspection for troubleshooting. The multiple tube entry points on the cassette allow for flexible loading of buffer tubes and bare fibres in the cassette.

Features	Benefits
Easy port access and identification	Captive and transparent covers on both sides of the cassette
Integrated patch cord guide supports patch management	Separated bare fibre and tube slack storage up to 2 m by design
Front and top labelling for easy identification	Multiple tube entry from the rear or both sides of the cassette

Ordering Information

CTXCPP - - **2** **000**

1 2 3 4

- 1 Select fibre count per cassette.**
- 12 = 12 fibres (LC, SC, or LSH)
 - 24 = 24 fibres (LC or SC)
 - 36 = 36 fibres (LC)

- 2 Select adapter code.**
- 6C = SC APC
 - 3C = SC UPC
 - B3 = LC APC
 - A9 = LC UPC
 - P1 = LSH APC
 - P2 = LSH UPC
 - AD = LC duplex OM3/OM4

- 3 Defines fibre type.**
- R = Single-mode
 - Q = OM4

- 4 Select pigtail type.**
- J = Ribbon
 - C = Crimp
 - H = Heat shrink

Ordering Example:
[CTXCPP36-B3-2RH000](#) —> Centrix Splice Cassette, 36 LC APC adapters and single-mode pigtailed, MIC™ 900 µm

Centrix™ Patch Cassettes



24 LC UPC patch cassette

The Centrix™ patch cassette provides LC, SC, or LSH single-fibre ports for patch cords or trunk single-fibre legs. The entry is on the front left, right, or rear side of the cassette and enables cross-connect applications. A drop handle provides fibre port protection and patch cord labelling on the front and top of the cassette allows for easy identification. The cassette can slide into Centrix housings and is secured with a latch mechanism. The patch cord guide is on the left side of the cassette, but can be easily changed to the right. The transparent and captive top and bottom covers enable easy handling and visual inspection for troubleshooting.

Features	Benefits
Easy port access and identification	Captive and transparent covers on both sides of the cassette
Integrated patch cord guide supports patch management	Separated bare fibre and tube slack storage up to 2 m by design
Front and top labelling for easy identification	Multiple tube entry from the rear or both sides on the cassette

Ordering Information

CTXCA

1

-

2

3

1 Select total fibre count.*
 12 = 12 fibres (SC)
 24 = 24 fibres (LC or SC)
 36 = 36 fibres (LC)
 *Defined by cable access

2 Select adapter code.
Single Mode:
 6C = SC APC
 3C = SC UPC
 B3 = LC APC
 A9 = LC UPC
 P1 = LSH APC
 P2 = LSH UPC

3 Select cable access type.
Rear Access*
 B = Rear access
Front Access†
 L = Left-front access
 R = Right-front access
 *Rear access will allow for 24 SC max or 36 LC max.
 †Front access will allow for 12 SC max or 24 LC max, due to front entrance space required.

Ordering Example:
[CTXCA24-B3L](#) → Centrix Patch Panel Cassette, 24 LC APC, left, front access



Centrix™ Splitter Cassettes

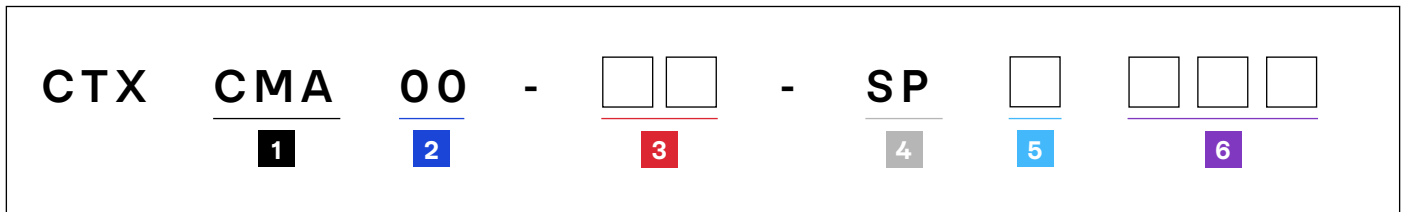


1x32 LC APC splitter cassette

The splitter cassettes are available in various splitter options with LC or SC ports allowing for greater network design flexibility. The integrated splitters are based on planar lightwave circuit technology, which has a compact size suited for density applications. All splitters are compatible with Corning’s low-bend-loss ClearCurve® optical fibre (compliant with ITU G.657.A2 standards) with a diameter of 250 µm. A drop handle facilities fibre port protection, patch cord organization, and port labelling. The retractable cassette is secured in the housing with a latch mechanism for tool-free installation and removal.

Features	Benefits
Easy port access and identification	Front and top labelling for easy identification
Integrated patch cord guide supports patch management	Compliant with IEC-61753-1 and Telcordia’s GR1209 and 1221 standards

Ordering Information



1 Defines cassette type, adapters with splitter devices.
CMA = Centrix™ cassette with splitter devices

2 Defines reference (future place holder).
00 = Reference place holder

3 Select adapter code.
6C = SC APC (24F maximum)
B3 = APC (36F maximum)

4 Defines device type.
SP = Splitter

5 Select number of devices.
1, 2, 3, 4, 5, 6, 7, 8*, or 9*
T = 12*
*1x2 only

6 Select split ratio.
102 = 1x2
104 = 1x4
108 = 1x8
116 = 1x16
132 = 1x32

Not all part number configurations are available. Please confirm availability with Customer Care at 00800 2676 4641 or cc.emea@corning.com.

Ordering Example:
[CTXCMA00-B3-SP116](#) → Centrix Splitter Cassette 1:16 Splitter, LC APC connectors
[CTXCMA00-B3-SP132](#) → Centrix Splitter Cassette 1:32 Splitter, LC APC connectors
[CTXCMA00-6C-SP116](#) → Centrix Splitter Cassette 1:16 Splitter, SC APC connectors



Centrix™ Splitter Cassettes

Technical Information

In		Out		Maximum Splitter Insertion Loss (≤)(dB):	Splitter PDL (Polarisation Dependent Loss) (≤)(dB):	Splitter Uniformity (≤)(dB):	Splitter Directivity (≤)(dB):
Type	Colour	Type	Colour				
1x SC APC	Green	16x SC APC	Green	13.5	0.3	1.1	55
1x LC APC	Green	16x LC APC	Green	13.5	0.3	1.1	55
1x LC APC	Green	32x LC APC	Green	16.7	0.3	1.5	55
2x LC APC	Green	32x LC APC	Green	17.5	0.4	2.5	55
1x LC APC	Green	16x LC APC	Green	13.5	0.3	1.1	55
1x LC APC	Green	8x LC APC	Green	10.4	0.2	1.0	55
1x LC APC	Green	4x LC APC	Green	7	0.2	0.8	55
1x LC APC	Green	8x LC APC	Green	10.4	0.2	1.0	55
1x LC APC	Green	4x LC APC	Green	7	0.2	0.8	55
1x LC UPC	Blue	8x LC UPC	Blue	10.9	0.2	1.0	55
1x LC UPC	Blue	16x LC UPC	Blue	14	0.3	1.1	55
1x LC UPC	Blue	32x LC UPC	Blue	16.7	0.3	1.5	55
1x LC APC	Green	4x LC APC	Green	7	0.2	0.8	55
1x SC APC	Green	4x SC APC	Green	7	0.2	0.8	55
1x LC APC	Green	2x LC APC	Green	4.2	0.2	0.7	55
2x LC APC	Green	8x LC APC	Green	11.2	0.3	2.2	55



Coarse Wavelength Division Multiplexing (CWDM) Cassettes



2x2 coupler coexistence module

Corning CWDM multiplexers and demultiplexers utilise advanced thin-film filter technology designed to work with less expensive, non-temperature-controlled lasers. CWDM filters are available in industry-standard 20 nm spacing with options for a 1,310 nm RF overlay bypass, as well as single or bidirectional test ports.

Features	Benefits
Passive and outside plant hardened	No power or temperature-controlled environment required
Epoxy-free optical path	Higher reliability
Low insertion loss and high isolation	Minimum impact on insertion loss budgets and lower transmission costs

Wavelength		Fibre Colour	
1,270	1,470	Slate	
1,290	1,490	Violet	
1,310	1,510	Blue	
1,330	1,530	Green	
1,350	1,550	Yellow	
1,370	1,570	Orange	
1,390	1,590	Red	
1,410	1,610	Brown	
1,430		White	
1,450		Black	
Test RX		Rose	
Test TX		Aqua	
COM		White	
EXP		Black	
Y		Slate	
W		Slate	
T		Slate	

Colour Codes for CWDM Wavelengths

Please contact your local Corning representative for specific requests.



Centrix™ MTP® Modules



MTP 12-fibre LC UPC module

Centrix™ MTP® modules provide the interface between MTP trunks or patch cords to LC or CS® connectivity, which can be used for cross-connects or into the electronics. The MTP ports are available on the left or right side of the front of cassette for individual network designs. The MPO adapters split the incoming fibres in LC or SC single-fibre ports. A drop handle facilitates fibre port protection, patch cord organization, and port labelling. The cassette can slide into Centrix housings and is secured with a latch mechanism. The patch cord guide is located on the left side of the cassette but can be easily changed to the right side with accessories.

Ordering Information

CX01	<input type="text"/>	<input type="text"/>	<input type="text"/>	<input type="text"/>	0	<input type="text"/>	00	<input type="text"/>	00
	1	2	3		4			5	

1 Select fibre count per cassette.

- 12 = 12 fibres
- 24 = 24 fibres
- 36 = 36 fibre, only LC

2 Select adapter type.

- 3C = SC UPC OS2
- 6C = SC APC OS2
- A9 = LC UPC OS2
- B3 = LC APC OS2
- AD = LC UPC Duplex OM4

3 Select preterminated MTP type.

- 89 = MTP 12F pinned OS2
- 90 = MTP 12F non-pinned OS2
- 93 = MTP 12F pinned OM4
- 75 = MTP 12F non-pinned OM4

4 Select polarity.

- U = Universal
- S = Straight

5 Select MTP position.

- Front Access:**
- L = Left
- R = Right
- Rear Access:**
- B = Back

Centrix™ Stubbed MTP® Modules



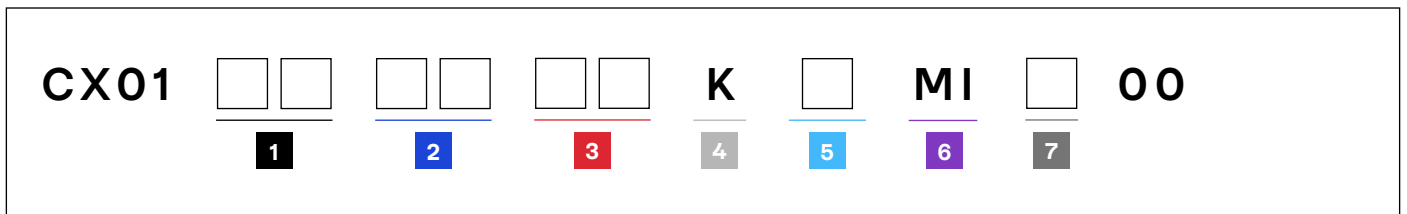
36 LC UPC stubbed cassettes with MTPs



36 LC APC stubbed cassettes with MTPs

Centrix™ stubbed MTP® modules provide the interface between high-density MTP trunks to LC or CS® connectivity, which can be used for cross-connect applications. The 60 cm MTP legs are available on the left, right, or the rear of the cassette for individual network designs. The MPO adapters split the incoming fibres in LC or SC single-fibre ports. A drop handle facilitates fibre port protection, patch cord organization, and labelling on front and top of the cassette. The cassette can slide into Centrix housings and is secured with a latch mechanism. The patch cord guide is located on the left side of the cassette but can be easily changed to the right side with accessories.

Ordering Information



1 Select fibre count per cassette.

- 12 = 12 fibres
- 24 = 24 fibres
- 36 = 36 fibres, only LC

2 Select adapter type.

- 3C = SC UPC
- 6C = SC APC
- A9 = LC UPC
- B3 = LC APC
- AD = LC Duplex OM4

3 Select preterminated MTP type.

- 89 = MTP 12F pinned E9 Ultra
- 90 = MTP 12F non-pinned E9 Ultra
- 93 = MTP 12F pinned (MM)
- 75 = MTP 12F non-pinned (MM)

4 Select leg length.

- K = 60 cm
- Other lengths available on request.*

5 Select polarity.

- U = Universal
- S = Straight

6 Select cable type.

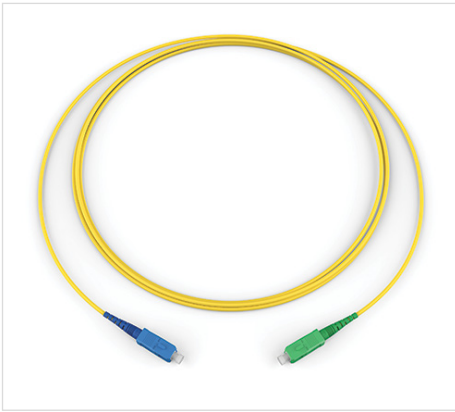
- MI = MIC™ central tube cable

7 Select cable entry direction, viewed from the front.

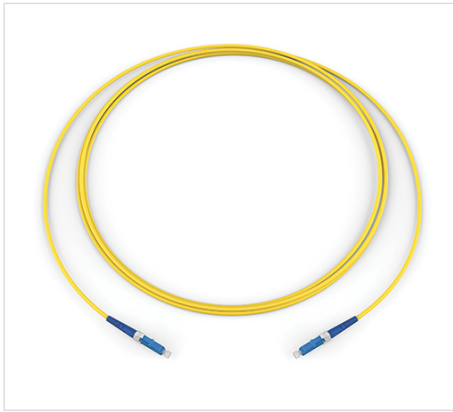
- L = Left
- R = Right
- B = Back (only for 19-in cabinets)



Patch Cords



SC UPC - SC APC



LC UPC - LC UPC



SC APC - SC APC

Value Prop

- The Centrix™ cable assembly provides fast installation with patch cords
- Populate up to four cabinets with one single patch cord length (4 m) for all cross-connects in single, dual, or quad cabinets

Density

- Simplex or duplex

Cable Types

- LSZH™ or plenum

Cable Diameter

- 1.6 mm or 2.0 mm with bend-optimised cable

Connector Options

- LC, SC, or LSH
- APC or UPC polishing

Reference Standard Single, Dual, or Quad Cabinet Cross-Connect Patch Cord Part Numbers

Part Number	Description
F444401G1Z16004M	Patch Cord, single-mode, SC APC to SC APC, 4 m long, 1.6 mm outer diameter
F585801G1Z16004M	Patch Cord, single-mode, SC UPC to SC UPC, 4 m long, 1.6 mm outer diameter
F222201G1Z16004M	Patch Cord, single-mode, LC APC to LC APC, 4 m long, 1.6 mm outer diameter
F020201G1Z16004M	Patch Cord, single-mode, LC UPC to LC UPC, 4 m long, 1.6 mm outer diameter
F224401G1Z16004M	Patch Cord, single-mode, LC APC to SC APC, 4 m long, 1.6 mm outer diameter
FLALA01G1Z16004M	Patch Cord, single-mode, LSH UPC to LSH UPC, 4 m long, 1.6 mm outer diameter
F202001G1Z16004M	Patch Cord, single-mode, LSH APC to LSH APC, 4 m long, 1.6 mm outer diameter

Corning recommends 1.6 mm patch cords for use in the Centrix solution. Full-size Centrix frames support 2,880 to 4,320 patch cords predicted on the connector selection. Other configurations are available. Please confirm availability with Customer Care at 00800 2676 4641 or cc.emea@corning.com.

CORNING

Corning Optical Communications GmbH & Co. KG • Leipziger Strasse 121 • 10117 Berlin, GERMANY
+00 800 2676 4641 • FAX: +49 30 5303 2335 • www.corning.com/opcomm/emea

Corning Optical Communications reserves the right to improve, enhance, and modify the features and specifications of Corning Optical Communications products without prior notification. A complete listing of the trademarks of Corning Optical Communications is available at www.corning.com/opcomm/trademarks. All other trademarks are the properties of their respective owners. Corning Optical Communications is ISO 9001 certified. © 2020, 2024 Corning Optical Communications. All rights reserved. CRR-1075-A4-BEN / September 2024