

Corning® Laboratory Equipment Product Selection Guide



CORNING



Table of Contents

Corning® Cell Counter	1
Corning Videodrop	2
Centrifugation Equipment	3
Corning LSE™ Mini Microcentrifuge	3
Corning LSE High Speed Microcentrifuge	3
Corning LSE Compact Centrifuge	4
Agitation Equipment	5
Corning LSE Vortex Mixer	5
Corning LSE Digital Microplate Shaker	6
Corning LSE Low Speed Orbital Shaker	6
Corning LSE Orbital Shaker	7
Corning LSE Nutating Mixer	7
Corning LSE Digital Vortexer	8
Corning LSE Platform Rocker	8
Constant Temperature Equipment	9
Corning LSE Benchtop Shaking Incubator	9
Corning LSE 49L Shaking Incubator	10
Corning LSE 71L Shaking Incubator	11
Corning LSE 6 Liter Digital Water Bath	12
Corning LSE Digital Dry Bath Heater	12
Corning Digital Hot Plates, Stirring Hot Plates, and Stirrers	14
Corning Analog Hot Plates, Stirring Hot Plates, and Stirrers	15
Liquid Handling Equipment	18
Corning Lambda™ EliteTouch™ Single- and Multi-channel Pipettors	18
Corning Lambda Plus Single- and Multi-channel Pipettors	19
Corning Stripettor™ Ultra Pipet Controller	20
Corning Aspirator	20
Transtar®-96 Accessories	20
Corning Bottle Top Dispensers	21
Catalog Number Index	22

Product Ordering Information

Products may not be available in all markets. For information on Purchasing Options, Terms and Conditions of Sale, Return and Repair Policies, and Warranty/Guarantee Registration, visit our website at www.corning.com/how-to-buy.

Corning® Cell Counter



The Corning Cell Counter is the first automated cell counter that combines the best of both worlds. It is:

- ▶ **Evolving** – periodic, seamless upgrades, added features, and improved functionality
- ▶ **Accurate** – thanks to its cloud-based machine learning algorithm
- ▶ **Improved resolution** – ability to accurately count as small as 4 μm (e.g., PBMC)
- ▶ **Low-cost** – works with common reusable glass hemocytometers. No consumables required
- ▶ **Fast** – thanks to its online image processing

Three-second Cell Counts

The Corning Cell Counter uses cloud-based image processing to perform a single cell count in less than three seconds. This is much faster than most automated cell-counting systems.

Higher Accuracy

The Corning Cell Counter uses a state-of-the-art image analysis software to ensure optimal accuracy. Trypan Blue can be added (Figure 1) to detect cell viability. The Corning Cell Counter can also detect clusters of cells, which leads to accurate cell counts of “highly concentrated samples” (up to 1 x 10⁷ cells/mL; Figure 2).

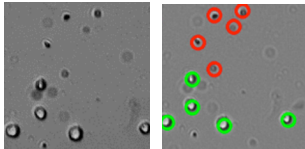


Figure 1. Dead cells stained with Trypan blue are detected by the image analysis algorithm. Red circles represent dead cells, green circles represent live cells.

Versatile

The cell counter’s organoid counting software extension offers users the ability to collect three-dimensional data including orgs./mL and surface area outputs.

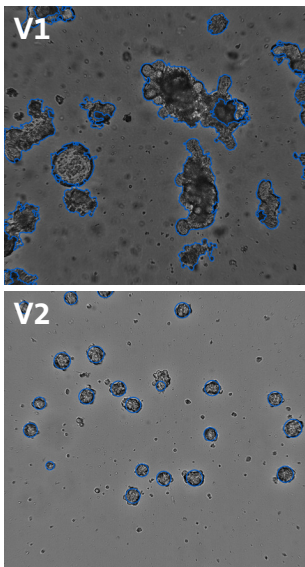


Figure 2. The organoid counting software extension’s image analysis algorithm is optimized for irregular 3D morphologies (V1) and spherical objects (V2).

	Mammalian	Organoids
Counting range	5 x 10 ⁴ to 1.0 x 10 ⁷ cells/mL	5 x 10 ⁴ to 1.0 x 10 ⁷ cells/mL
Counting range	4 to 70 μm	20 μm to 200 μm*
Measurement time	<3 sec.**	<3 sec.**
Compatibility	Reusable and disposable counting chambers: 0.1 mm	Reusable and disposable counting chambers: 0.1 or 0.2 mm
Sample volume	10 μL	10 μL or 20 μL chamber permitting
Weight	1.0 kg	1.0 kg
Field of view	1.5 x 1.5 mm	1.5 x 1.5 mm
Magnification	200X	100X
Image resolution	2048 x 1536	1536 x 1536
Exported formats	PNG	PNG
Light source	LED	LED
Camera	5 MP CMOS	5 MP CMOS
Unit dimensions (L x W x H)	122 x 122 x 125 mm	122 x 122 x 125 mm
Operating environment	5°C to 40°C, 20% to 95% humidity	5°C to 40°C, 20% to 95% humidity
Algorithm version	-	Version 1 irregular morphology Version 2 spherical objects

*Size limits depend on dimensions of counting chamber, user can set limits in the application.

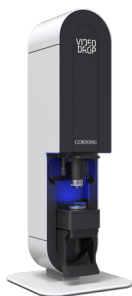
**Measured using a 73 Mbps download speed and a 20 Mbps upload speed. Actual speed can vary depending on the internet connection.

Cat. No.	Description
6749	Corning Cell Counter

Accessories

Cat. No.	Description
480200	0.1 mm Corning Counting chamber
480201	0.2 mm Corning Counting chamber
6749-OC	Organoid counting software with 0.2 mm counting chamber

Corning® Videodrop



Corning Videodrop utilizes the principles of interferometry in conjunction with microscopy to sense, detect, characterize, and track single nanoparticles in real time. The operation of this bioproduction analytical device is seamless thanks to its intuitive software interface and efficient sample handling protocol.

- ▶ Speed under 1 minute for
 - Loading
 - Processing
 - Cleaning
- ▶ No calibration or wash is needed
- ▶ Repeatable and reproducible
 - No inter-operator bias
 - No parameter adjustment

One 5 to 10 μ L drop is placed on a specialized Videodrop slide within a magnetic sample holder. The operator prepares the stage for analysis by lifting the handle and lowering the sample protective shield. Preview mode confirms the Blue LED saturation is within parameters. The technician selects 'record' to initiate real-time analysis of the nanoparticle concentration and Brownian motion of the bioproduction batch. Cleaning occurs with a laboratory lint-free Kimwipe (Kimberly Clark) infused with certified detergents to absorb the drop on both the slide and objective lens. Data is readily available to review and export immediately after the desired number of particles are detected.

With its small footprint, ease of use, and processing speed, the Corning Videodrop is the ideal tool for characterizing nanoparticles and aims to accelerate clinical trials of drug, cell and gene therapy, and vaccine production.

Size of Biological Nanoparticles (Hydrodynamic diameter)	80 to 500 nm
Concentration	1.108 to 1.1010 part./mL
Minimal system requirements	<ul style="list-style-type: none"> ▶ Windows® 10 or 11 PC ▶ 16 GB of RAM ▶ Hard drive with at least 4 TB (terabyte) storage capacity ▶ Processor with at least 8 cores (min. of 3.6 to 5 GHz of frequency per core) ▶ USB SS port available
Weight	39.69 lbs. (18 kg)
Footprint (L x W x H)	11.82 x 11.82 x 31.15 in. (30 x 30 x 79.1 cm)
Optical wavelength	450 nm

Cat. No.	Description
VD-1000	Videodrop device for characterizing nanoparticles

Spare Parts and Accessories

Cat. No.	Description	Qty/Pk
VD-1000-AT	Videodrop Audit Trail	1
VD-1000-GS	Videodrop glass slides	50
VD-1000-SH	Videodrop sample holder	1
VD-1000-PC	Videodrop protective cover	1
VD-1000-LPC	LED protective cover	1

Services

Contact Videodrop@corning.com for more information.

Cat. No.	Description
VD-1000-SC	Videodrop Service contract (12 months)
VD-1000-PM	Videodrop Preventative maintenance

Centrifugation Equipment



Corning® LSE™ Mini Microcentrifuge

The Corning LSE Mini microcentrifuge is a personal benchtop instrument that operates at a fixed speed of 6,000 rpm (2,000 x g) and is designed for quick spin downs of micro-samples. Operation is made simpler and more convenient with the design of a quick-release rotor system and electronic brake. Once samples are loaded and the lid is closed, the rotor rapidly accelerates to 6,000 rpm.

This speed range is ideal for bringing small droplets to the bottom of the tubes for micro-filtrations or as basic separations. Pressing the lid release button will activate the electronic brake, which brings the rotor to a fast stop. The mini microcentrifuge can accommodate up to 8 microcentrifuge tubes or 4 PCR strip tubes. Smaller samples such as 0.2, 0.25, and 0.5 mL can also be processed by using the included tube adapters.

- ▶ Quick-release rotor system eliminates the need for tools to exchange rotors
- ▶ Electronic braking provides rapid deceleration for more efficient sample prep
- ▶ Compact, rugged design withstands heavy use in a crowded lab environment
- ▶ Dual lid switch provides safe operation
- ▶ Ergonomic design allows for comfortable handling

Cat. No.	Description
6770	Corning LSE Mini microcentrifuge, 100-240V; US, EU, UK, and AU plugs included

Accessories

Cat. No.	Description
6770-RT	Rotor, holds 8 x 1.5 or 2.0 mL tubes
6770-RT5	Rotor, holds 4 x 8-strip tubes
6770-RTA.20	Adapter, 0.20 for rotor (Cat. No. 6770-RT)
6770-RTA.25	Adapter, 0.25 for rotor (Cat. No. 6770-RT)
6770-RTA.5	Adapter, 0.5 for rotor (Cat. No. 6770-RT)

Corning LSE High Speed Microcentrifuge



The Corning LSE High speed microcentrifuge features an easy-to-use, digital control interface and high-speed performance for quick nucleic acid and protein separations. Two control knobs are used to precisely set rotor speed and run time, and parameters are shown on the easy-to-read LED displays. Press the Speed/G-Force knob to toggle the display between rpm and calculated g-force. The LSE high speed microcentrifuge incorporates a brushless drive and unique air cooling system to both reduce noise and minimize sample heating even during prolonged runs at maximum speed. Rotor included.

- ▶ Fast acceleration to a maximum speed 13,300 rpm/16,300 x g
- ▶ Complete with easy access, 24 x 1.5 or 2.0 mL rotor
- ▶ Precise, digital control system
- ▶ Set and view rotor speed in rpm or g-force
- ▶ Quiet and cool running, even at maximum speed

Cat. No.	Voltage	Plug Type
6765-HS	120V	US
6766-HS	230V	EU
6767-HS	230V	UK
6768-HS	100V	US

Accessories

Cat. No.	Description	Qty/Pk
480134	Individual adapters for 0.5 or 0.4 mL tubes	6
480135	Individual adapters for 0.2 mL tubes	6



Corning® LSE™ Compact Centrifuge

The Corning LSE Compact centrifuge is a space-saving centrifuge ideal for use in life science and industrial research labs. Three angle rotors are available for use with the LSE compact centrifuge, which can accommodate tube sizes of 15 and 50 mL microcentrifuge tubes. In addition, the LSE compact centrifuge will accommodate a swing-out rotor for 6 x 5 mL tubes. Optional adapters accommodate other various tube sizes including standard conical tubes and round bottom tubes. The LSE compact centrifuge has a maximum g-force of 4,185 x g. Other features include an electronic lid lock system, over speed protection, and an automatic shut off imbalance detection system. The LSE compact centrifuge is cold room compatible. Rotors are sold separately.

- ▶ Capacity of 6 x 50 mL or 12 x 15 mL rotor
- ▶ Maximum speed: 6,000 rpm/4,185 x g
- ▶ Accepts both conical and round bottom tubes
- ▶ Space-saving footprint

Cat. No.	Voltage	Plug Type
6755	120V	US
6759	230V	EU
6758	230V	UK
6756	100V	US

Accessories

Cat. No.	Description	Qty/Pk
480136	6 x 50 mL fixed angle rotor	1
480137	12 x 15 mL fixed angle rotor	1
480138	6 x 5 mL swing-out rotor	1
480139	18 x 1.5 mL fixed angle rotor	1
480143	Combination rotor for 5, 15, and 50 mL tubes	1
480140	Adapters for 10 and 15 mL tubes in 50 mL rotor	6
480141	Adapters for 5 and 7 mL tubes in 50 mL rotor	6
480142	Adapters for 5, 7, and 10 mL tubes in 15 mL rotor	6



6 x 50 mL fixed angle rotor
(Cat. No. 480136)



12 x 15 mL fixed angle rotor
(Cat. No. 480137)



6 x 5 mL swing-out rotor
(Cat. No. 480138)

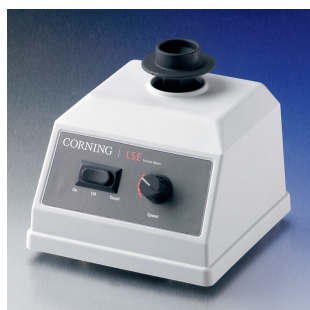


18 x 1.5 mL fixed angle rotor
(Cat. No. 480139)



Combination rotor
(Cat. No. 480143)

Agitation Equipment



Corning® LSE™ Vortex Mixer

The Corning LSE variable speed vortex mixer provides fast, efficient mixing with minimal vibration. The unit features a powerful, counter-balanced motor drive, and continuous or “touch” mix modes. A range of accessories are available for all common sample tubes and containers.

- ▶ Variable speed for gentle to vigorous mixing
- ▶ Optimized counter balance for minimal vibration
- ▶ Lightweight and portable
- ▶ Includes cup head for all standard microtubes and centrifuge tubes
- ▶ Mix a variety of tubes and plates with optional accessory heads
- ▶ Touch and continuous mix modes
- ▶ Safe for cold room and incubator use, not intended for use in CO₂ incubators
- ▶ 2-year warranty

Cat. No.	Description	Voltage	Type	Speed (rpm)	Weight	Dimensions (L x W x D)
6775	LSE vortex mixer	120V, 60Hz	US	200 - 3,400	4.6 lbs. (2.1 kg)	5.5 x 6.3 x 5.1 in. (14 x 16 x 13 cm)
6776	LSE vortex mixer	230V, 50Hz	EU	200 - 2,800	4.6 lbs. (2.1 kg)	5.5 x 6.3 x 5.1 in. (14 x 16 x 13 cm)
6777	LSE vortex mixer	230V, 50Hz	UK	200 - 2,800	4.6 lbs. (2.1 kg)	5.5 x 6.3 x 5.1 in. (14 x 16 x 13 cm)
6778	LSE vortex mixer	100V, 60Hz	JP	200 - 3,200	4.6 lbs. (2.1 kg)	5.5 x 6.3 x 5.1 in. (14 x 16 x 13 cm)
6779	LSE vortex mixer	230V, 50Hz	CHN	200 - 2,800	4.6 lbs. (2.1 kg)	5.5 x 6.3 x 5.1 in. (14 x 16 x 13 cm)

Accessories



Cat. No.	Description
480100	Optional head, 3 inch, for processing larger numbers of tubes
480101	Optional head for 24 x 1.5/2.0 mL tubes, 24 x 0.5 mL tubes, or 32 x 0.2 mL tubes (or 4 tube strips)
480102	Optional head for 1 microplate, or 64 x 0.2 mL tubes, or 8 x 0.2 mL tube strips
480103	Optional head for 8 x 15 mL and 8 x 12/13 mm diameter tubes
480104	Optional head attachment for 6 x 50 mL tubes
480105	Optional head for 12 x 1.5/2.0 mL tubes, held horizontally
480106	Optional head for 4 x 15 mL tubes, held horizontally
480107	Optional head for 2 x 50 mL tubes, held horizontally



Corning® LSE™ Digital Microplate Shaker

The Corning LSE digital microplate shaker features digital control of shaking speed and run time. A single control knob is used to set parameters, and values are shown on a large 3-digit display. A sturdy base encloses the motor for quiet, vibration-free operation.

The included stainless steel platform accommodates up to 4 microplates (standard or deep well), and the shaker is safe for use in temperature controlled environments from 5°C to 40°C.

- ▶ Large capacity – process up to 4 microplates
- ▶ 3 mm orbit for resuspending, homogenizing, or vortexing
- ▶ Large digital display with single-knob control of speed time
- ▶ Safe for cold room and incubator use, not intended for use in CO₂ incubators
- ▶ 2-year warranty

Cat. No.	Description	Voltage	Type	Speed (rpm)	Weight	Dimensions (L x W x D)
6780-4	LSE digital microplate shaker	120V, 50/60Hz	US	100 - 1,400	9.5 lbs. (4.3 kg)	6.6 x 10.98 x 6 in. (16.8 x 27.9 x 15.3 cm)
6781-4	LSE digital microplate shaker	230V, 50/60Hz	EU	100 - 1,200	9.5 lbs. (4.3 kg)	6.6 x 10.98 x 6 in. (16.8 x 27.9 x 15.3 cm)
6782-4	LSE digital microplate shaker	230V, 50/60Hz	UK	100 - 1,200	9.5 lbs. (4.3 kg)	6.6 x 10.98 x 6 in. (16.8 x 27.9 x 15.3 cm)
6781-5	LSE digital microplate shaker	230V, 50/60Hz	CHN	100 - 1,200	9.5 lbs. (4.3 kg)	6.6 x 10.98 x 6 in. (16.8 x 27.9 x 15.3 cm)

Corning LSE Low Speed Orbital Shaker

The Corning LSE low speed orbital shaker includes a 30 x 30 cm platform and is ideal for staining and destaining gels, washing blots and general mixing applications. Speed can be set from 3 to 60 rpm and the timer can be set for up to 2 hours or for continuous operation.

- ▶ Ideal for staining and washing of fragile gels
- ▶ Gentle motion prevents foaming of liquids
- ▶ Simple analog control with easy-turn knobs
- ▶ 19 mm orbit for blotting, gel staining, and general mixing
- ▶ Safe for cold room and incubator use, not intended for use in CO₂ incubators
- ▶ 2-year warranty



Cat. No.	Description	Voltage	Type	Speed (rpm)	Weight	Dimensions (L x W x D)
6780-FP	LSE low speed orbital shaker	120V, 50/60Hz	US	3 - 60	14.5 lbs. (6.6 kg)	10 x 12.6 x 6.3 in. (25.5 x 32 x 16 cm)
6781-FP	LSE low speed orbital shaker	230V, 50/60Hz	EU	3 - 60	14.5 lbs. (6.6 kg)	10 x 12.6 x 6.3 in. (25.5 x 32 x 16 cm)
6782-FP	LSE low speed orbital shaker	230V, 50/60Hz	UK	3 - 60	14.5 lbs. (6.6 kg)	10 x 12.6 x 6.3 in. (25.5 x 32 x 16 cm)



Corning® LSE™ Orbital Shaker

The Corning LSE orbital shaker meets a variety of shaking and mixing applications. A powerful brushless motor and counter-balanced shaker mechanism provides smooth operation for years of trouble-free use. Different platforms (order separately) are available and are easily interchangeable.

- ▶ Two stainless steel platform options
- ▶ 19 mm orbit for aeration of cultures and staining gels
- ▶ Large digital display with single-knob control
- ▶ Digital control of shaking speed and time
- ▶ Safe for cold room and incubator use, not intended for use in CO₂ incubators
- ▶ Maximum capacity: 4 x 1L, 5 x 500 mL, 9 x 250 mL, or 16 x 125 mL
- ▶ 2-year warranty

Cat. No.	Description	Voltage	Type	Speed (rpm)	Weight	Dimensions (L x W x D)
6780-NP	LSE orbital shaker	120V, 50/60Hz	US	20 - 300	16 lbs. (7.3 kg)	10.1 x 12.5 x 5 in. (25.6 x 31.8 x 12.7 cm)
6781-NP	LSE orbital shaker	230V, 50/60Hz	EU	20 - 300	16 lbs. (7.3 kg)	10.1 x 12.5 x 5 in. (25.6 x 31.8 x 12.7 cm)
6782-NP	LSE orbital shaker	230V, 50/60Hz	UK	20 - 300	16 lbs. (7.3 kg)	10.1 x 12.5 x 5 in. (25.6 x 31.8 x 12.7 cm)

Accessories

Cat. No.	Description
480108	Flat platform with rubber mat
480109	Flask clamp platform (without clamps)
480110	Clamp for 25 mL flask
480111	Clamp for 50 mL flask
480112	Clamp for 125 mL flask
480113	Clamp for 250 mL flask
480114	Clamp for 500 mL flask
480115	Clamp for 1L flask

Corning LSE Nutating Mixer



The Corning LSE Nutating Mixer is a compact mixer that combines the motion of an orbital shaker and a platform rocker to produce a continuous three-dimensional agitation. The output demonstrates a thorough yet gentle mix without foaming. This mixer is safe to use in temperature-controlled environments.

The pitch and speed of the Corning LSE Nutating Mixer are designed to provide the optimal motion for mixing and resuspending samples in small volume vessels such as blood and centrifuge tubes. The dimpled mat on the platform surface holds tubes firmly in place while the unit is powered on. The mat exhibits an array of tube capacity as it can hold 60 x 1.5 mL tubes, 30 pediatric blood tubes (3 mL), 21 standard blood tubes (7 mL), 17 x 15 mL or 9 x 50 mL tubes.

- ▶ Ideal for mixing large strands of DNA into solution in microcentrifuge tubes or mixing blood into a buffer in large centrifuge tubes
- ▶ Small footprint
- ▶ 3D motion is ideal for mixing and resuspending samples
- ▶ Safe for cold room and incubator use, not intended for use in CO₂ incubators

Cat. No.	Description	Voltage	Type
6720	LSE nutating mixer with dimpled mat	120V, 50/60Hz	US
6721	LSE nutating mixer with dimpled mat	230V, 50/60Hz	EU
6722	LSE nutating mixer with dimpled mat	230V, 50/60Hz	UK

Corning® LSE™ Digital Vortexer



The Corning Digital Vortexer is a multipurpose shaker dedicated to a variety of shaking and mixing applications. The interchangeable platforms accommodate many different sample containers such as flasks, bottles, tube racks, microplates, boxes, and dishes.

- ▶ Three versatile platform options (available separately)
- ▶ Compact design with easy-access control panel
- ▶ Non-slip rubber mat to keep containers in place
- ▶ Safe for cold room and incubator use, not intended for use in CO₂ incubators
- ▶ 5-year warranty

Cat. No.	Description	Voltage	Type	Speed (rpm)	Weight	Dimensions (L x W x D)
6709	LSE digital vortexer	120V/60Hz	US	100 - 1,200	16 lbs. (7.3 kg)	10.3 x 13.3 x 5.1 in. (26.2 x 33.7 x 13 cm)
6710	LSE digital vortexer	230V/50Hz	EU	100 - 1,200	16 lbs. (7.3 kg)	10.3 x 13.3 x 5.1 in. (26.2 x 33.7 x 13 cm)
6711	LSE digital vortexer	230V/50Hz	CHN	100 - 1,200	16 lbs. (7.3 kg)	10.3 x 13.3 x 5.1 in. (26.2 x 33.7 x 13 cm)

Accessories

Cat. No.	Description
48010	Platform for four microplates
48011	Platform with non-slip rubber mat
48012	Spring loaded platform for flasks, bottles, or tube racks

Corning LSE Platform Rocker



The Corning LSE Platform Rocker is a compact yet high capacity rocker that is ideal for Western blotting and general mixing applications.

- ▶ Low profile and compact size (11 lbs./5 kg)
- ▶ 11-pound load capacity
- ▶ Non-slip rubber pads to prevent sample containers from moving during operation
- ▶ Double platform model available for increased capacity
- ▶ Safe for cold room and incubator use, not intended for use in CO₂ incubators
- ▶ 5-year warranty

Cat. No.	Description	Voltage	Type	Speed (Tilts/min.)	Weight	Dimensions (L x W x H)
6703	LSE platform rocker, single platform	120V, 50/60Hz	US	5 - 120	11.7 lbs. (5.3 kg)	12.8 x 14.2 x 5.7 in. (32.5 x 36 x 14.5 cm)
6704	LSE platform rocker, single platform	230V, 50/60Hz	EU, UK	5 - 120	11.7 lbs. (5.3 kg)	12.8 x 14.2 x 5.7 in. (32.5 x 36 x 14.5 cm)
6702	LSE platform rocker, single platform	230V, 50/60Hz	CHN	5 - 120	11.7 lbs. (5.3 kg)	12.8 x 14.2 x 5.7 in. (32.5 x 36 x 14.5 cm)
6705	LSE platform rocker, double platform	120V, 50/60Hz	US	5 - 120	12.7 lbs. (5.8 kg)	12.8 x 14.2 x 5.7 in. (32.5 x 36 x 14.5 cm)
6706	LSE platform rocker, double platform	230V, 50/60Hz	EU, UK	5 - 120	12.7 lbs. (5.8 kg)	12.8 x 14.2 x 5.7 in. (32.5 x 36 x 14.5 cm)
6707	LSE platform rocker, double platform	230V, 50/60Hz	CHN	5 - 120	12.7 lbs. (5.8 kg)	12.8 x 14.2 x 5.7 in. (32.5 x 36 x 14.5 cm)

Constant Temperature Equipment

Corning® LSE™ Benchtop Shaking Incubator



Truly a benchtop style, the lid on the Corning benchtop shaking incubator has a low pivot point which provides a space-saving size sure to fit on the lab bench and under shelves. Each unit includes a software package, which provides the option of saving data to an external computer or monitoring rpm and temperature throughout runs. The maximum capacity is 4 x 1L flasks. 2-year warranty.

Temperature Range	Ambient +5°C to +70°C
Operation Temperature Range	5°C to 40°C
Shaker Speed	20 to 300 rpm
Shaker Timer	1 minute to 99 hours or continuous
Temperature Increments	0.1°C
Speed Increments	1 rpm
Platform Dimensions	11.8 x 11.8 in. (30 x 30 cm)
Dimensions (W x D x H)	14.6 x 20.9 x 15.7 in. (37 x 53 x 40 cm)
Weight	44.4 lbs. (20.2 kg)
Height Lid Open	21.7 in. (55 cm)
Communication Port	USB to monitor temperature and rpm

Cat. No.	Description	Voltage	Type
6790	LSE benchtop shaking incubator with platform	120V, 50/60Hz	US
6791	LSE benchtop shaking incubator with platform	230V, 50/60Hz	EU

Accessories

Cat. No.	Description
480144	Universal platform, 30 x 30 cm
480145	Petri dish shelf
480146	Sticky mat, 150 x 150 mm
480147	Microtiter hotel, holds maximum 3 microplates
480148	Combination tube holder, 6 x 15/50 mL tubes
480149	Plastic clamp, 125 mL
480150	Plastic clamp, 250 mL
480151	Plastic clamp, 500 mL
480152	Plastic clamp, 1000 mL
480167	Clamp for 2,000 mL flask (for use with 71L shaking incubator only)
480156	Universal Spring loaded clamp platform



Universal platform
(Cat No. 480144)



Plastic clamps
(Cat Nos. 480149/50/51/52)



Universal spring loaded clamp
platform (Cat. No. 480156)

Corning® LSE™ 49L Shaking Incubator

This cabinet-style incubator has a compact footprint and can also be stacked to maximize space efficiency. The built in orbital shaker accepts a large assortment of platforms and clamps that can accommodate flasks, Petri dishes, and test tube racks. 2-year warranty. The maximum capacity is 4 x 1L flasks.



Chamber Volume	49L/1.7 cu. ft.
Temperature Range/Display	Ambient +5°C to 80°C in 0.1°C increments/digital
Temperature Uniformity/Accuracy	±0.25°C/±0.1°C
Shaker Speed	20 to 400 rpm (maximum 300 rpm when stacked)
Shaker Timer	0 to 99 minutes or continuous
Shaker Orbit	19 mm
Flask Capacity	4 x 1L, 5 x 500 mL, 9 x 250 mL, 16 x 125 mL
Construction	Interior: Mirrored stainless steel Exterior: Cold rolled steel
Chamber (W x D x H)	13.5 x 14.75 x 15 in. (34.3 x 37.5 x 38.1 cm)
Exterior (W x D x H)	23 x 19.25 x 22.25 in. (42.5 x 55 x 58 cm)
Weight	83 lbs. (37.7 kg)

Cat. No.	Description	Voltage	Type
6750	LSE shaking incubator, 49L	120V, 50/60Hz	US
6752	LSE shaking incubator, 49L	230V, 50/60Hz	EU and UK

Accessories

Cat. No.	Description
480153	Flask clamp platform, pre-drilled
480154	Flat platform with non-slip rubber mat (300 x 300 mm)
480155	Double flat platform with non-slip rubber mat (300 x 300 mm)
480156	Universal spring loaded clamp platform
480157	Shelf, full, for Cat. Nos. 6750 and 6752
480158	Stacking adapter for Cat. Nos. 6750 and 6752

Corning® LSE™ 71L Shaking Incubator

This high performance shaking incubator has a full size glass door and internal light that allows easy viewing of samples without disturbing the chamber contents. Mechanical convection provides a safe, stable temperature environment and fast chamber temperature recovery after opening the door. 2-year warranty. The maximum capacity is 4 x 2L/6 x 1L flasks.

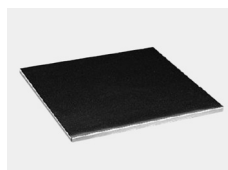


Chamber Volume	71L/2.5 cu. ft.
Temperature Range/Display	Ambient +5°C to 80°C
Temperature Uniformity/Accuracy	±0.2°C at 37°C
Temperature Display	0.1°C
Shaker Speed	20 to 300 rpm
Shaker Orbit	19 mm
Shaker Timer	0 to 99 minutes or continuous
Dimensions (W x D x H)	Chamber: 17.4 x 15.6 x 16 in. (44.2 x 39.6 x 40.6 cm) Exterior: 22.6 x 21.4 x 25 in. (57.4 x 54.4 x 63.5 cm)
Weight	140 lbs. (63.6 kg)

Cat. No.	Description	Voltage	Type
6753	LSE shaking incubator, 71L	120V, 50/60Hz	US
6754	LSE shaking incubator, 71L	230V, 50/60Hz	EU and UK

Accessories

Cat. No.	Description
480159	Shaking platform pre-drilled for flask clamps
480160	Flat shaker platform with non-slip rubber mat (390 x 330 mm)
480161	Platform with 4 x 2L flask clamps
480162	Platform with 6 x 1L flask clamps
480163	Platform with 8 x 500 mL flask clamps
480164	Platform with 12 x 250 mL flask clamps
480165	Platform with 20 x 125 mL flask clamps
480166	Platform with 30 x 50 mL flask clamps
480156	Universal spring loaded clamp platform
480167	Clamp for 2,000 mL flask (for use with 71L shaking incubator only)
480168	Rack holder for 15 mL test tubes
480169	Rack holder for 50 mL test tubes
480170	Shelf, full, for Cat. Nos. 6753 and 6754



Cat. No. 480160



Cat. No. 480161



Cat. No. 480162



Cat. No. 480163



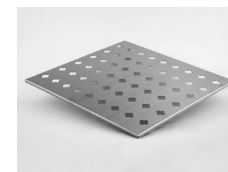
Cat. No. 480164



Cat. No. 480166



Cat. Nos. 480168/69



Cat. No. 480170



Corning® LSE™ 6 Liter Digital Water Bath

The Corning LSE Digital Water Bath is constructed from corrosion-resistant stainless steel and can accommodate up to 6 liters of water or can serve as a dry bath when using thermal beads.

- ▶ Compact design
- ▶ Stainless steel cover to retain heat and minimize evaporation
- ▶ Powerful 500W heater programmed by LED digital controller
- ▶ Precise temperature control by hydraulic thermostat
- ▶ 2-year warranty

Chamber capacity	6L
Chamber construction	Stainless steel
Chamber maximum load	20 lbs. (9.09 kg)
Temperature range	Ambient +5°C to 99°C
Exterior dimensions (W x D x H)	14.9 x 11.4 x 9.0 in. (12.9 in. with cover) 38 x 29 x 23 cm (33 cm with cover)
Chamber dimensions	12.6 x 6.7 x 6.9 in. (32 x 17 x 18 cm)
Weight	19 lbs. (8.6 kg)

Cat. No.	Description
6783	Digital water bath, 6L, 120V
6784	Digital water bath, 6L, 230V (EU and UK plug)

Corning LSE Digital Dry Bath Heater



The Corning Digital Dry Bath Heaters are available in single, dual, and four block configurations (blocks not included, sold separately) and provide a broad temperature range up to 150°C, which makes them useful for a variety of applications in molecular biology, histology, clinical, environmental, and industrial laboratories. They have been designed to incorporate the best combination of features including block capacity, dual displays, and an external temperature probe that gives life science researchers the confidence and efficiency they need when working with precious samples.

- ▶ Single, dual, and four block capacity to maximize sample processing (blocks not included, sold separately)
- ▶ Dual display allows for easy monitoring of temperature and time
- ▶ USB connectivity enables traceability of data
- ▶ Molded block chamber provides excellent temperature uniformity
- ▶ 3-year warranty

Dimensions	
Single and dual block	8.3 x 12.4 x 4.7 in. (21 x 29 x 12 cm)
Four block	8.3 x 16.3 x 4.7 in. (21 x 39 x 12 cm)
Capacity	1, 2, 4 blocks
Temperature Range	Ambient +5°C to 150°C
Temperature Accuracy	±0.3°C
Temperature Uniformity	±0.2°C
Temperature Increments	0.1°C
Digital Display	Dual
External Temperature Probe	Yes, optional accessory
Chamber Construction	Uniformly molded
Block Lid	Yes, included
Interface	USB

Cat. No.	Description	Block Capacity	Voltage	Plug	Weight	Dimensions (L x W x H)
6875-SB	LSE™ digital dry bath heater	Single	120V	US	7.0 lbs. (3.2 kg)	8.3 x 12.4 x 4.7 in. (21 x 29 x 12 cm)
6885-DB	LSE digital dry bath heater	Dual	120V	US	7.0 lbs. (3.2 kg)	8.3 x 12.4 x 4.7 in. (21 x 29 x 12 cm)
6895-FB	LSE digital dry bath heater	Four	120V	US	9.6 lbs. (4.4 kg)	8.3 x 16.3 x 4.7 in. (21 x 39 x 12 cm)
6876-SB	LSE digital dry bath heater	Single	230V	EU	7.0 lbs. (3.2 kg)	8.3 x 12.4 x 4.7 in. (21 x 29 x 12 cm)
6886-DB	LSE digital dry bath heater	Dual	230V	EU	7.0 lbs. (3.2 kg)	8.3 x 12.4 x 4.7 in. (21 x 29 x 12 cm)
6896-FB	LSE digital dry bath heater	Four	230V	EU	9.6 lbs. (4.4 kg)	8.3 x 16.3 x 4.7 in. (21 x 39 x 12 cm)
6877-SB	LSE digital dry bath heater	Single	230V	UK	7.0 lbs. (3.2 kg)	8.3 x 12.4 x 4.7 in. (21 x 29 x 12 cm)
6887-DB	LSE digital dry bath heater	Dual	230V	UK	7.0 lbs. (3.2 kg)	8.3 x 12.4 x 4.7 in. (21 x 29 x 12 cm)
6897-FB	LSE digital dry bath heater	Four	230V	UK	9.6 lbs. (4.4 kg)	8.3 x 16.3 x 4.7 in. (21 x 39 x 12 cm)
6878-SB	LSE digital dry bath heater	Single	100V	JP	7.0 lbs. (3.2 kg)	8.3 x 12.4 x 4.7 in. (21 x 29 x 12 cm)
6888-DB	LSE digital dry bath heater	Dual	100V	JP	7.0 lbs. (3.2 kg)	8.3 x 12.4 x 4.7 in. (21 x 29 x 12 cm)
6898-FB	LSE digital dry bath heater	Four	100V	JP	9.6 lbs. (4.4 kg)	8.3 x 16.3 x 4.7 in. (21 x 39 x 12 cm)

Accessories



Cat. No.	Description
480116	Single block, 48 x 0.2 mL PCR tubes or 6 x 0.2 mL strips
480117	Single block, 20 x 2.0 mL tubes
480118	Single block, 24 x 0.5 mL tubes
480119	Single block, 24 x 1.5 mL tubes
480120	Single block, 35 x 6 mm tubes
480121	Single block, 20 x 10 mm tubes
480122	Single block, 20 x 12 mm tubes
480123	Single block, 20 x 13 mm tubes
480124	Single block, 12 x 15 mL centrifuge tubes
480125	Single block, 12 x 16 mm tubes
480126	Single block, 12 x 17 mm tubes
480127	Single block, 6 x 20 mm tubes
480128	Single block, 6 x 25 mm tubes
480129	Single block, 5 x 50 mL centrifuge tubes (for single block unit only)
480130	Single block, 96-well PCR microplate, skirted or nonskirted
480131	Dual block, 96-well microplate or 4 slides (for dual block unit only)
480132	Dual block, 96-well PCR microplate, skirted, or nonskirted (for dual block unit only)
480133	Dual block, 384-well PCR microplate (for dual block unit only)

Corning® Digital Hot Plates, Stirring Hot Plates, and Stirrers

Corning digital hot plates, stirrers, and stirring hot plates are made with the same durability and quality Corning has been putting into Pyroceram® top products since 1964. All models include a Pyroceram top.

- ▶ Twin display stirring hot plate shows both temperature and stirring speed on separate digital displays to ensure accuracy
- ▶ Temperature accuracy within $\pm 2^{\circ}\text{C}$ and stirring speeds at $\pm 5\%$ of the speed setting you choose
- ▶ Digital displays indicate when set temperature and stirring speeds are reached
- ▶ Safety indicators – power button and hot top indicators warn if unit is plugged in or is too hot to touch
- ▶ Angled front panel and large knobs minimize damage from spills
- ▶ PC-400D/410D/420D top plate size: 5 x 7 in. (12.7 x 17.8 cm)
- ▶ PC-600D/610D/620D top plate size: 10 x 10 in. (25.4 x 25.4 cm)
- ▶ 2-year warranty



Model PC-400D



Model PC-410D



Model PC-420D

Digital Hot Plates

Cat. No.	Model	Voltage	Temperature Range	Dimensions (L x W x D)
6795-400D	PC-400D	120V	5°C to 550°C	10.8 x 7.8 x 4.3 in. (27.5 x 19.7 x 10.9 cm)
6795-600D	PC-600D	120V	5°C to 550°C	4.625 x 11 x 15.375 in. (11.75 x 19.7 x 39.05 cm)
6796-400D*	PC-400D	230V	5°C to 550°C	10.8 x 7.8 x 4.3 in. (27.5 x 19.7 x 10.9 cm)
6796-600D*	PC-600D	230V	5°C to 550°C	4.625 x 11 x 15.375 in. (11.75 x 19.7 x 39.05 cm)
6797-400D	PC-400D	100V	5°C to 550°C	10.8 x 7.8 x 4.3 in. (27.5 x 19.7 x 10.9 cm)
6797-600D	PC-600D	100V	5°C to 550°C	4.625 x 11 x 15.375 in. (11.75 x 19.7 x 39.05 cm)
6798-400D**	PC-400D	230V	5°C to 550°C	10.8 x 7.8 x 4.3 in. (27.5 x 19.7 x 10.9 cm)
6798-600D**	PC-600D	230V	5°C to 550°C	4.625 x 11 x 15.375 in. (11.75 x 19.7 x 39.05 cm)

*Comes with EU and UK plug.

**Comes with EU plug only.

Digital Stirrers

Cat. No.	Model	Voltage	Temperature Range	Dimensions (L x W x D)
6795-410D	PC-410D	120V	60 to 1,150	10.8 x 7.8 x 4.3 in. (27.5 x 19.7 x 10.9 cm)
6795-610D	PC-610D	120V	60 to 1,150	4.625 x 11 x 15.375 in. (11.75 x 19.7 x 39.05 cm)
6796-410D	PC-410D	230V	60 to 1,150	10.8 x 7.8 x 4.3 in. (27.5 x 19.7 x 10.9 cm)
6796-610D	PC-610D	230V	60 to 1,150	4.625 x 11 x 15.375 in. (11.75 x 19.7 x 39.05 cm)
6797-410D	PC-410D	100V	60 to 1,150	10.8 x 7.8 x 4.3 in. (27.5 x 19.7 x 10.9 cm)
6797-610D	PC-610D	100V	60 to 1,150	4.625 x 11 x 15.375 in. (11.75 x 19.7 x 39.05 cm)
6798-410D	PC-410D	230V	60 to 1,150	10.8 x 7.8 x 4.3 in. (27.5 x 19.7 x 10.9 cm)
6798-610D	PC-610D	230V	60 to 1,150	4.625 x 11 x 15.375 in. (11.75 x 19.7 x 39.05 cm)

Digital Stirring Hot Plates

Cat. No.	Model	Voltage	Temperature/ Stir Range (rpm)	Dimensions (L x W x D)
6795-420D	PC-420D	120V	5°C - 550°C/60 - 1,150	10.8 x 7.8 x 4.3 in. (27.5 x 19.7 x 10.9 cm)
6795-420KIT†	PC-420D	120V	5°C - 550°C/60 - 1,150	10.8 x 7.8 x 4.3 in. (27.5 x 19.7 x 10.9 cm)
6795-620D	PC-620D	120V	5°C - 550°C/60 - 1,150	4.625 x 11 x 15.375 in. (11.75 x 19.7 x 39.05 cm)
6795-620KIT†	PC-620D	120V	5°C - 550°C/60 - 1,150	4.625 x 11 x 15.375 in. (11.75 x 19.7 x 39.05 cm)
6796-420D	PC-420D	230V	5°C - 550°C/60 - 1,150	10.8 x 7.8 x 4.3 in. (27.5 x 19.7 x 10.9 cm)
6796-620D	PC-620D	230V	5°C - 550°C/60 - 1,150	4.625 x 11 x 15.375 in. (11.75 x 19.7 x 39.05 cm)
6797-420D	PC-420D	100V	5°C - 550°C/60 - 1,150	10.8 x 7.8 x 4.3 in. (27.5 x 19.7 x 10.9 cm)
6797-620D	PC-620D	100V	5°C - 550°C/60 - 1,150	4.625 x 11 x 15.375 in. (11.75 x 19.7 x 39.05 cm)
6798-420D	PC-420D	230V	5°C - 550°C/60 - 1,150	10.8 x 7.8 x 4.3 in. (27.5 x 19.7 x 10.9 cm)
6798-620D	PC-620D	230V	5°C - 550°C/60 - 1,150	4.625 x 11 x 15.375 in. (11.75 x 19.7 x 39.05 cm)

†6795-420KIT and 6795-620KIT includes: One stirring hot plate (Cat No 6795-420D in 6795-420KIT or Cat No. 6795-620D in 6795-620KIT); external temperature controller (Cat. No. 6795PR); vertical support rod (Cat. No 440129) supplied as two 9-inch (22.9 cm) support rods that can be screwed together (18 inches); stir bar retriever (Cat. No. 6970SR).

Available for purchase separately and not included in the Kits: Bosshead clamp (Cat. No. 440140) and holding rod (Cat. No. 440141).

Corning® Analog Hot Plates, Stirring Hot Plates, and Stirrers

PC-200 Hot Plates

Corning's exclusive glass-ceramic Pyroceram® top is standard.

- ▶ Micro-chemistry size
- ▶ Hot top indicator light
- ▶ 2-year warranty



Cat. No.	Voltage	Temperature	Weight	Top Size	Dimensions (H x W x D)
6795-200	120V	25°C - 480°C	4 lbs. (1.8 kg)	4 x 5 in. (10.2 x 12.7 cm)	3.9 x 5.9 x 8.5 in. (10 x 15 x 21.5 cm)
6796-200*	230V	25°C - 480°C	4 lbs. (1.8 kg)	4 x 5 in. (10.2 x 12.7 cm)	3.9 x 5.9 x 8.5 in. (10 x 15 x 21.5 cm)
6797-200	100V	25°C - 480°C	4 lbs. (1.8 kg)	4 x 5 in. (10.2 x 12.7 cm)	3.9 x 5.9 x 8.5 in. (10 x 15 x 21.5 cm)

*Comes with UK plug.

PC-210 Stirrers

PC-210 stirrers come with Corning's Pyroceram® top.

- ▶ Micro-chemistry size
- ▶ 2-year warranty



Cat. No.	Voltage	Stir Range (rpm)	Weight	Top Size	Dimensions (H x W x D)
6795-210	120V	60 - 1,100	4.4 lbs. (2.0 kg)	4 x 5 in. (10.2 x 12.7 cm)	3.9 x 5.9 x 8.5 in. (10 x 15 x 21.5 cm)
6796-210*	230V	60 - 1,100	4.4 lbs. (2.0 kg)	4 x 5 in. (10.2 x 12.7 cm)	3.9 x 5.9 x 8.5 in. (10 x 15 x 21.5 cm)
6797-210	100V	60 - 1,100	4.4 lbs. (2.0 kg)	4 x 5 in. (10.2 x 12.7 cm)	3.9 x 5.9 x 8.5 in. (10 x 15 x 21.5 cm)

*Comes with UK plug.

PC-220 Hot Plate/Stirrers

Hot plate/stirrer units come with Corning's exclusive Pyroceram top.

- ▶ Micro-chemistry size
- ▶ Hot top indicator light
- ▶ Glass ceramic top
- ▶ 2-year warranty



Cat. No.	Voltage	Stir Range (rpm)	Temperature	Weight	Top Size	Dimensions (H x W x D)
6795-220	120V	60 - 1,100	25°C - 480°C	5.1 lbs. (2.3 kg)	4 x 5 in. (10.2 x 12.7 cm)	3.9 x 5.9 x 8.5 in. (10 x 15 x 21.5 cm)
6796-220*	230V	60 - 1,100	25°C - 480°C	5.1 lbs. (2.3 kg)	4 x 5 in. (10.2 x 12.7 cm)	3.9 x 5.9 x 8.5 in. (10 x 15 x 21.5 cm)
6797-220	100V	60 - 1,100	25°C - 480°C	5.1 lbs. (2.3 kg)	4 x 5 in. (10.2 x 12.7 cm)	3.9 x 5.9 x 8.5 in. (10 x 15 x 21.5 cm)

*Comes with UK plug.

Corning® Scholar PC-170 Hot Plates

An economically priced hot plate that has a white enameled steel top plate that provides heat transfer up to 360°C. Dual heat shields dissipate heat and keep the case cool to the touch.



- ▶ Compact, saves on bench space
- ▶ UL/CUL approved
- ▶ 1-year warranty

Cat. No.	Voltage	Temperature	Weight	Top Size	Dimensions (H x W x D)
6795-170	120V	60°C - 360°C	3 lbs. (1.3 kg)	5 x 5 in. (12.7 x 12.7 cm)	4 x 5 x 5 in. (10.2 x 12.7 x 12.7 cm)
6796-170S*	230V	60°C - 360°C	3 lbs. (1.3 kg)	5 x 5 in. (12.7 x 12.7 cm)	4 x 5 x 5 in. (10.2 x 12.7 x 12.7 cm)
6797-170	100V	60°C - 360°C	3 lbs. (1.3 kg)	5 x 5 in. (12.7 x 12.7 cm)	4 x 5 x 5 in. (10.2 x 12.7 x 12.7 cm)

*Comes with UK plug.

Corning Scholar PC-171 Stirrer

The Corning Scholar PC-171 stirrer provides compact design, vigorous stirring with alternating current motor for longer life and rugged construction.



- ▶ UL/CUL approved
- ▶ 1-year warranty

Cat. No.	Voltage	Stir Range (rpm)	Weight	Top Size	Dimensions (H x W x D)
6795-171	100-240V	100 - 1,600	4 lbs. (1.8 kg)	5 x 5 in. (12.7 x 12.7 cm)	3.2 x 5 x 5 in. (8.1 x 12.7 x 12.7 cm)

PC-611 Stirrer

The PC-611 is designed to stir large volumes of liquid with ease. The stirrer is designed for 5 gallon vessels (19L) but can stir up to 10 gallons. This powerful stirring is achieved with a very compact design that conserves bench space. The stirrer uses a magnet that is constructed out of rare earth metals for exceptional coupling strength. The magnet's strength also centers the stir bar quickly inside the vessel. Heavy duty motor and rugged plastic (ABS) top will provide years of reliable service. The PC-611 achieves vigorous stirring with a more compact unit at a lower cost than competitive units. This high volume stirrer can handle many applications that previously required an overhead stirrer.



- ▶ UL/CUL approved
- ▶ 1-year warranty

Cat. No.	Voltage	Stir Range (rpm)	Weight	Top Size	Dimensions (H x W x D)
6795-611	120V	100 - 1,500	11.0 lbs. (5 kg)	11 x 11 in. (27.9 x 27.9 cm)	12.0 x 14.4 x 4.8 in. (30.48 x 36.58 x 12.19 cm)

SS10I Stirrer

One-position slow speed stirrer with integral control to accommodate up to a 10L vessel. Smooth reliable stirring at slow speeds helps promote healthy cell growth. Integral speed control and glass-filled resin platform material. 2-year warranty.



Cat. No.	Voltage	Stir Range (rpm)	No. Pos.	Nom. Stir Vol. per Pos.	Max. Vessel Diam. (mm)	Motor Type	Weight	Dimensions (L x W x D)
440812	120V	10 - 150	1	10L	280	DC, stepper	5.7 lbs. (2.6 kg)	10.3 x 10.3 x 2.8 in. (26 x 26 x 7 cm)

MP4I, MP5I, and MP9I Multiple Position Stirrers with Integral Control

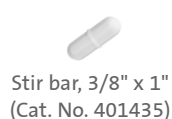
Corning now offers stirrers that stir up to nine vessels at the same time. These stirring platforms come in 4-, 5-, and 9-position models. The unit's magnets and DC motor provide smooth, well-coupled stirring up to 2,000 rpm. The speed of all positions on the units is set simultaneously with the integral knob. Integral speed control and glass-filled resin platform material. 2-year warranty.



Cat. No.	Model	Voltage	Stir Range (rpm)	No. Pos.	Nom. Stir Vol. per Pos.	Max. Vessel Diam. (mm)	Motor Type	Weight	Dimensions (L x W x D)
440824	MP4I	120V	350 - 2,000	4	1L	130	DC	6.8 lbs. (3.1 kg)	10.3 x 10.3 x 2.8 in. (26 x 26 x 7 cm)
440825	MP5I	120V	350 - 2,000	5	400 mL	95	DC	7 lbs. (3.2 kg)	10.3 x 10.3 x 2.8 in. (26 x 26 x 7 cm)
440826	MP9I	120V	350 - 2,000	9	250 mL	75	DC	8.4 lbs. (3.8 kg)	10.3 x 10.3 x 2.8 in. (26 x 26 x 7 cm)

Stir Bars and Stir Bar Retriever

Corning® magnetic stir bars are polytetrafluoroethylene (PTFE)-coated for increased chemical resistance. The Corning stir bar retriever contains a strong magnet to remove a stir bar from all glass and plastic containers used in the laboratory. The container must be taken off the magnetic stirrer before using the retriever as the high powered magnet in the stirrer cancels out the one in the retriever. The handle is designed for ergonomic and easy retrieval.



Cat. No.	Description	Use with Model
401435	Stir bar, 3/8" x 1"	PC-210/220/410D/420D
400430	Stir bar, 3/8" x 2"	PC-610D/620D
409000	Stir bar, 3/4" x 3"	PC-611
6970SR	Magnetic stir bar retriever	All Corning stirrers and hot plate/stirrers

Temperature Controller and Accessories

When used with the digital hot plate or stirring hot plate, the external temperature controller ensures precision temperature accuracy of the liquid inside the vessel as opposed to the temperature of the hot plate top.



Magnetic stir bar retriever
(Cat. No. 6970SR)



Digital hot plate accessories

Cat. No.*	Description	Use with Model
6795PR** 6795PR-CH**	Temperature controller for digital hot plates and stirring hot plates	PC-400D/420D/600D/620D
6795KIT 6795KIT-CH	Corning Digital Hot Plate and Stirring Hot Plate Accessory Kit Includes: External temperature controller (Cat. No. 6795PR/6795PR-CH), 18" support rods (Cat. No. 440129/440129-CH), and stir bar retriever (Cat. No. 6970SR).	PC-400D/420D/600D/620D
440129 440129-CH	Stainless steel support rod, two 9" (45.7 cm) rods, 5/16" diameter. Rods can be screwed together to 18".	All digital and PC-200/210/220
400084 400084-CH	Stainless steel support rod, 12" (30.5 cm), 5/16" diameter	All digital and PC-200/210/220
440140† 440140-CH†	Boss head clamp for use with 5/16" support rod and holding rod	All hot plates with 5/16" or smaller support rod
440141 440141-CH	Temperature probe support clamp, thermocouple	All hot plates

*Please contact Customer Service prior to ordering the accessories.

**Temperature controllers are not available for use with stirrer only units.

†Bosshead clamps to support rod; holding rod connects to bosshead. Temperature controller slides into holding rod.

Liquid Handling Equipment



Corning® Lambda™ EliteTouch™ Single- and Multi-channel Pipettors

- ▶ Ergonomic handle design is a perfect fit for both the right and left hand
- ▶ Convenient one-hand volume setting with auto-lock system prevents accidental volume change
- ▶ 4-digit counter provides greater precision and is perfectly positioned for visibility at all times
- ▶ Single-channel pipettors are compatible with very narrow tubes
- ▶ Fully autoclavable and UV-resistant for sample protection against contaminations
- ▶ The multi-channel shafts retract individually for perfect tip loading and easier tip ejection
- ▶ Unique ejector lever system enables effortless tip ejection
- ▶ Easy in-lab calibration helps you quickly adjust your pipettor to various liquid types
- ▶ Individually tested and supplied with a certificate of quality
- ▶ Additional colored pushbuttons (included) enable easy size identification and reduce the risk of cross-contamination
- ▶ 3-year warranty

Single-channel

Cat. No.	Volume Range (µL)	Accuracy (%)	Precision (%)	Non-filtered Tip (µL)
6050	0.1 - 2	±40.0 to ±1.5	≤12.0 to ≤0.7	10
6051	0.5 - 10	±4.0 to ±1.0	≤2.8 to ≤0.4	10
6052	2 - 20	±3.5 to ±0.8	≤1.5 to ≤0.3	200
6053	5 - 50	±3.5 to ±0.8	≤1.3 to ≤0.3	200
6054	10 - 100	±3.0 to ±0.8	≤1.0 to ≤0.2	200
6055	20 - 200	±2.0 to ±0.6	≤0.7 to ≤0.2	200
6056	100 - 1,000	±2.5 to ±0.6	≤0.6 to ≤0.2	1,000

8-channel

6057	0.5 - 10	±10.0 to ±2.0	≤8.0 to ≤1.2	10
6058	5 - 50	±4.0 to ±1.6	≤2.5 to ≤0.6	200
6059	10 - 200	±5.0 to ±1.0	≤3.0 to ≤0.6	200/300
6060	30 - 300	±3.0 to ±1.0	≤1.5 to ≤0.6	300

12-channel

6061	0.5 - 10	±10.0 to ±2.0	≤8.0 to ≤1.2	10
6062	5 - 50	±4.0 to ±1.6	≤2.5 to ≤0.6	200
6063	10 - 200	±5.0 to ±1.0	≤3.0 to ≤0.6	200/300
6064	30 - 300	±3.0 to ±1.0	≤1.5 to ≤0.6	300

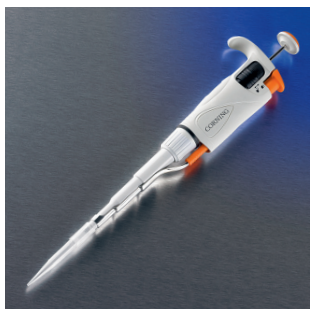
Starter Kit

Cat. No.	Description
6065	Corning Lambda EliteTouch Starter Kit Includes: 4 single-channel pipettors: 0.5 to 10 µL (Cat. No. 6051), 2 to 20 µL (Cat. No. 6052), 20 to 200 µL (Cat. No. 6055), 100 to 1000 µL (Cat. No. 6056); universal linear stand for 4 single-channel pipettors (Cat. No. 6066); Corning DeckWorks pipet tips: 10 µL (Cat. No. 4135), 200 µL (Cat. No. 4138), 1000 µL (Cat. No. 4140); 3 colored pushbuttons (4 sets)

Accessories

Cat. No.	Description
4088	Pipettor stand for one single-channel, 8- or 12-channel pipettor
6066	Universal linear stand, orange, for four pipettors, (four single-channel, two 8- or 12-channel pipettors)
6067	Universal linear stand, transparent, for four pipettors (four single-channel, two 8- or 12-channel pipettors)
6068	Universal linear stand, transparent, for six pipettors, (six single-channel, three 8- or 12-channel pipettors)
6069	Corning carousel stand for six Lambda EliteTouch single-channel pipettors

Corning® Lambda™ Plus Single- and Multi-channel Pipettors



- ▶ Low pipetting forces
- ▶ Volume lock prevents accidental change
- ▶ Fully autoclavable and UV-resistant
- ▶ Designed for universal fit with many common brands of pipet tips
- ▶ Adjustable tip ejector
- ▶ Factory calibrated to strict ISO 8655 standards
- ▶ 3-year warranty



Single-channel

Cat. No.	Volume Range (µL)	Accuracy (%)	Precision (%)	Non-filtered Tip (µL)
4070	0.1 - 2	±40 to ±1.5	≤12 to ≤0.7	10
4071	0.5 - 10	±4.0 to ±0.5	≤2.8 to ≤0.4	10
4072	2 - 20	±3.0 to ±0.8	≤1.5 to ≤0.3	200
4073	10 - 100	±1.6 to ±0.8	≤0.8 to ≤0.2	200
4074	20 - 200	±1.2 to ±0.6	≤0.6 to ≤0.2	200
4075	100 - 1,000	±1.6 to ±0.6	≤0.40 to ≤0.15	1,000

8-channel

4080	0.5 - 10	±10.0 to ±2.0	≤8.0 to ≤1.2	10
4081	5 - 50	±4.0 to ±1.6	≤2.5 to ≤0.6	200
4082	20 - 200	±3.0 to ±1.0	≤1.5 to ≤0.6	200/300
4083	50 - 300	±1.6 to ±1.0	≤1.5 to ≤0.6	300

12-channel

4084	0.5 - 10	±10.0 to ±2.0	≤8.0 to ≤1.2	10
4085	5 - 50	±4.0 to ±1.6	≤2.5 to ≤0.6	200
4086	20 - 200	±3.0 to ±1.0	≤1.5 to ≤0.6	200/300
4087	50 - 300	±1.6 to ±1.0	≤1.5 to ≤0.6	300

Starter Kit

Cat. No.	Description
4069	Lambda Plus Starter Kit Includes: 4 single-channel pipettors: 0.5 to 10 µL (Cat. No. 4071), 2 to 20 µL (Cat. No. 4072), 20 to 200 µL (Cat. No. 4074), 100 to 1000 µL (Cat. No. 4075); Universal carousel rack for six single-channel pipettors (Cat. No. 4078; Corning DeckWorks pipet tips: 10 µL (Cat. No. 4135), 200 µL (Cat. No. 4138), 1000 µL (Cat. No. 4140)



Accessories

Cat. No.	Description
4078	Corning Universal carousel rack for six Corning Lambda Plus single-channel pipettors
4088	Corning Pipettor stand for Corning 8- and 12-channel pipettors
6066	Universal linear stand for four pipettors, orange (four single-channel, maximum of two 8-channel or 12-channel pipettors)
6067	Universal linear stand for four pipettors, transparent (four single-channel, maximum of two 8-channel or 12-channel pipettors)
6068	Universal linear stand for six pipettors, transparent (six single-channel, maximum of three 8-channel or 12-channel pipettors)



Corning® Stripettor™ Ultra Pipet Controller

The Stripettor Ultra pipet controller is designed for use with glass and plastic serological pipets from 0.5 to 100 mL. When fully charged, the batteries enable up to 8 hours of continuous use. Aspirating and dispensing speed is controlled through the finger triggers.

- ▶ LCD display for continuous visualization of speed, modes, and battery status
- ▶ Colored nose pieces for user or application identification
- ▶ 2-year warranty

Cat. No. Description

4099	Stripettor Ultra Pipet Controller
------	-----------------------------------

Accessories

Cat. No.	Description	Qty/Pk	Qty/Cs
4991	Hydrophobic PTFE filter 0.2 µm (5 pcs)	5	5
4992	Hydrophobic PTFE filter 0.45 µm (5 pcs)	5	5
4993	Silicone pipet holder	1	1
4994	Battery set, 3 x AAA, NiHM	3	3
4995	Battery cover	1	1
4996	Universal power supply, 9V with set of adaptors (EU, US, UK, and AUS)	1	1
4997	Colored nose pieces, set of 4 (orange, yellow, green, red)	4	4
4998	Charging stand, 3-positions	1	1

Corning Aspirator

The Corning Aspirator is an aspiration tool used for the removal of liquids from a variety of lab vessels. The device allows precise fingertip aspiration control, and is a sensible alternative to the use of glass pipets for supernatant disposal.

- ▶ Vacuum regulation controlled by a touch-sensitive button allows for quick and comfortable aspiration of liquids
- ▶ Entirely autoclavable for maximum safety when working with hazardous materials

Cat. No. Description

4930	Corning Aspirator
------	-------------------

Accessories

Cat. No.	Description	Qty/Pk	Qty/Cs
4931	8-channel adapter for the Corning Aspirator	1	1
9016	Aspirating pipet, without graduations, unplugged, sterile, paper/plastic wrapped	50	500

Transtar®-96 Accessories

A sterile 96 tip disposable cartridge, which loads into the Transtar system, enables liquids to be aspirated, transferred, and dispensed over a volume range of 25 to 200 µL in 5 µL increments.

Cat. No.	Description	Sterile	Qty/Pk	Qty/Cs
7610	Transtar disposable cartridges	Yes	1	24
4876	Transtar disposable reservoir liner, open	Yes	1	100
4877	Transtar disposable reservoir liner, 12-channel	Yes	1	100
4878	Transtar disposable reservoir liner, 8-channel	Yes	1	100



Corning® Bottle Top Dispensers

The Corning Bottle Top Dispenser is a universal solution for dispensing organic and inorganic liquids. The specialized air-purging and closed circuit system ensures no loss of reagent during dispensing, as well as when the device is not in use.

- ▶ Six (6) different volume models to dispense solutions from 0.25 to 100 mL
- ▶ Easy in-lab calibration with built-in recalibration mechanism
- ▶ Fully autoclavable for protection against contamination
- ▶ 3-year warranty

Cat. No.	Volume Range	Thread Size
6840	0.25 - 2.5 mL	GL 32
6841	0.5 - 5 mL	GL 32
6842	1 - 10 mL	GL 32
6843	2.5 - 25 mL	GL 45
6844	5 - 50 mL	GL 45
6845	10 - 100 mL	GL 45

Accessories

Cat. No.	Description
6867	Telescopic suction tube, 2.5 - 10 mL
6868	Telescopic suction tube, 25 - 100 mL
6869	Borosilicate Glass Accessory, one-way valve
6870	Borosilicate Glass Accessory, calcium chloride tube
6871	Thread adapter, made of PP, A32/A25
6872	Thread adapter, made of PP, A32/A28
6873	Thread adapter, made of PP, A32/A38
6874	Thread adapter, made of PP, A32/A40
6875	Thread adapter, made of PP, A32/A45
6876	Thread adapter, made of PP, A45/A32

Catalog Number Index

Cat. No.	Page No.	Cat. No.	Page No.	Cat. No.	Page No.	Cat. No.	Page No.	Cat. No.	Page No.
4069	19	6707	8	6795-610D	14	6887-DB	13	480129	13
4070	19	6709	8	6795-611	16	6888-DB	13	480130	13
4071	19	6710	8	6795-620D	14	6895-FB	13	480131	13
4072	19	6711	8	6795-620KIT	14	6896-FB	13	480132	13
4073	19	6720	7	6795KIT	17	6897-FB	13	480133	13
4074	19	6721	7	6795KIT-CH	17	6898-FB	13	480134	3
4075	19	6722	7	6795-PR	17	6970SR	17	480135	3
4078	19	6749	1	6795PR-CH	17	7610	20	480136	4
4080	19	6749-OC	1	6796-170S	16	9016	20	480137	4
4081	19	6750	10	6796-200	15	48010	8	480138	4
4082	19	6752	10	6796-210	15	48011	8	480139	4
4083	19	6753	11	6796-220	15	48012	8	480140	4
4084	19	6754	11	6796-400D	14	400084	17	480141	4
4085	19	6755	4	6796-410D	14	400084-CH	17	480142	4
4086	19	6756	4	6796-420D	14	400430	17	480143	4
4087	19	6758	4	6796-600D	14	401435	17	480144	9
4088	18, 19	6759	4	6796-610D	14	409000	17	480145	9
4099	20	6765-HS	3	6796-620D	14	440129	17	480146	9
4876	20	6766-HS	3	6797-170	16	440129-CH	17	480147	9
4877	20	6767-HS	3	6797-200	15	440140	17	480148	9
4878	20	6768-HS	3	6797-210	15	440140-CH	17	480149	9
4930	20	6770	3	6797-220	15	440141	17	480150	9
4931	20	6770-RT	3	6797-400D	14	440141-CH	17	480151	9
4991	20	6770-RTA.5	3	6797-410D	14	440812	16	480152	9
4992	20	6770-RTA.20	3	6797-420D	14	440824	17	480153	10
4993	20	6770-RTA.25	3	6797-600D	14	440825	17	480154	10
4994	20	6770-RTS	3	6797-610D	14	440826	17	480155	10
4995	20	6775	5	6797-620D	14	480100	5	480156	9, 10, 11
4996	20	6776	5	6798-400D	14	480101	5	480157	10
4997	20	6777	5	6798-410D	14	480102	5	480158	10
4998	20	6778	5	6798-420D	14	480103	5	480159	11
6050	18	6779	5	6798-600D	14	480104	5	480160	11
6051	18	6780-4	6	6798-610D	14	480105	5	480161	11
6052	18	6780-FP	6	6798-620D	14	480106	5	480162	11
6053	18	6780-NP	7	6840	21	480107	5	480163	11
6054	18	6781-4	6	6841	21	480108	7	480164	11
6055	18	6781-5	6	6842	21	480109	7	480165	11
6056	18	6781-FP	6	6843	21	480110	7	480166	11
6057	18	6781-NP	7	6844	21	480111	7	480167	9, 11
6058	18	6782-4	6	6845	21	480112	7	480168	11
6059	18	6782-FP	6	6867	21	480113	7	480169	11
6060	18	6782-NP	7	6868	21	480114	7	480170	11
6061	18	6783	12	6869	21	480115	7	480200	1
6062	18	6784	12	6870	21	480116	13	480201	1
6063	18	6790	9	6871	21	480117	13	VD-1000	2
6064	18	6791	9	6872	21	480118	13	VD-1000-AT	2
6065	18	6795-170	16	6873	21	480119	13	VD-1000-GS	2
6066	18, 19	6795-171	16	6874	21	480120	13	VD-1000-LPC	2
6067	18, 19	6795-200	15	6875	21	480121	13	VD-1000-PC	2
6068	18, 19	6795-210	15	6875-SB	13	480122	13	VD-1000-PM	2
6069	18	6795-220	15	6876	21	480123	13	VD-1000-SC	2
6702	8	6795-400D	14	6876-SB	13	480124	13	VD-1000-SH	2
6703	8	6795-410D	14	6877-SB	13	480125	13		
6704	8	6795-420D	14	6878-SB	13	480126	13		
6705	8	6795-420KIT	14	6885-DB	13	480127	13		
6706	8	6795-600D	14	6886-DB	13	480128	13		

Warranty/Disclaimer: Unless otherwise specified, all products are for research use or general laboratory use only.* Not intended for use in diagnostic or therapeutic procedures. Not for use in humans. These products are not intended to mitigate the presence of microorganisms on surfaces or in the environment, where such organisms can be deleterious to humans or the environment. Corning Life Sciences makes no claims regarding the performance of these products for clinical or diagnostic applications. *For a listing of US medical devices, regulatory classifications or specific information on claims, visit www.corning.com/resources.

Corning's products are not specifically designed and tested for diagnostic testing. Many Corning products, though not specific for diagnostic testing, can be used in the workflow and preparation of the test at the customers discretion. Customers may use these products to support their claims. We cannot make any claims or statements that our products are approved for diagnostic testing either directly or indirectly. The customer is responsible for any testing, validation, and/or regulatory submissions that may be required to support the safety and efficacy of their intended application.

CORNING

Corning Incorporated
Life Sciences

www.corning.com/lifesciences

Technical Support

ScientificSupportAP@corning.com

ASIA/PACIFIC

Australia/New Zealand

t 61 427286832

Singapore

t 65 6572-9740

Korea

t 82 2-796-9500

India

t 91 124 4604000