

Centrix™ System

The central office or headend is the heart of your network. With reliability being critical, you need products that optimise your network's capabilities.

The Centrix™ system, Corning's next-generation switch center offering, combines extreme flexibility and simplicity with the ultimate in density. With superior patch cord management and an innovative fibre routing system, the Centrix system is a cross-functional solution that meets the requirements of multiple application spaces.

| Product | Characteristics |
|----------------------------------|---|
| Centrix System MTP® Module | 1 MPO - 12 SC APC or UPC 2 MPO - 24 LC or SC 3 MPO - 36 LC APC or UPC |
| Centrix System Splitter Cassette | 1 or 2x16 SC or LC 1 or 2x32 splitter, LC connectors |
| Centrix System Splice Cassette | 12 SC, LC, or LSH APC or UPC 24 SC or LC APC or UPC 36 LC APC or UPC |
| Centrix System WDM Cassette | 8 channel mux or demux, SC or LC APC or UPC 4 quadplexers SC APC |

| Product | Capacity |
|------------|---|
| 1U Housing | 3 cassettes, with up to 108 LC ports, 72 SC ports, or 36 LSH ports |
| 2U Housing | 6 cassettes, with up to 216 LC ports, 144 SC ports, or 72 LSH ports |
| 4U Housing | 12 cassettes, with up to 432 LC ports, 288 SC ports, or 104 LSH ports |

| Centrix System | Housing Capacity | Port Capacity |
|----------------|----------------------|---|
| Single Frame | Up to 10 4U housings | Up to 4,320 LC ports 2,880 SC ports 1,440 LSH ports |
| Dual Frame | Up to 20 4U housings | Up to 8,640 LC ports 5,760 SC ports 2,880 LSH ports |
| Quad Frame | Up to 40 4U housings | Up to 17,280 LC ports 11,520 SC ports 5,760 LSH ports |

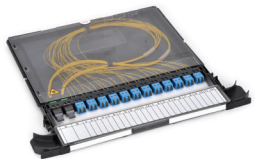


Centrix™ System

Centrix™ system cabinets provide best-in-class density and fibre management, with single, dual, and quad configurations housing up to 17,280 LC ports in one square meter

Cassettes support up to 36 LC, 24 SC, or 12 LSH connectors, in single-mode APC, UPC, or multimode configurations. Accommodates splice and patch functions, as well as optical devices

Centrix system MTP® connector module



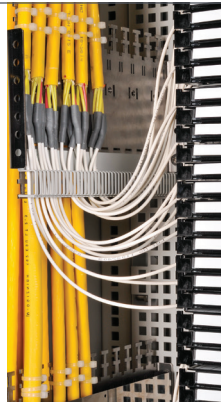
Centrix system splitter cassette



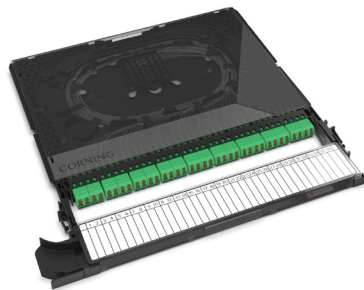
Centrix system WDM cassette



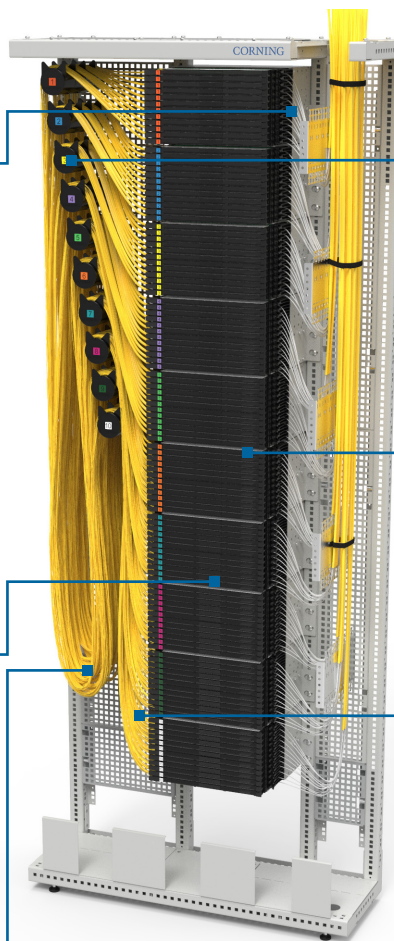
Three cabinet strain-relief plates with speed pipe design available for multiple requirements



Centrix system splice cassette



Gravity loop allows for simple and clean patch cord management



Modular hubs allow for simple, clean, and tidy installation, with numbering available



Label card provides easy port identification



4-metre patch cord length accommodates single, dual, and quad configurations

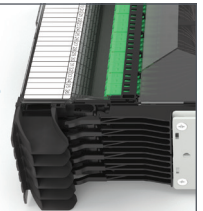
Housings hold 3 cassettes (in 1U housing), 6 cassettes (in 2U housing), or 12 cassettes (in 4U housing)



Lockable doors available for secure installations



Patch cord routing guides ensure appropriate slack for proper sliding tray usage



SC APC to SC APC patch cord, 1 fibre with 1.6 mm outer diameter



LC APC to LC APC patch cord, 1 fibre with 1.6 mm outer diameter



Corning Optical Communications GmbH & Co. KG · Leipziger Strasse 121 · 10117 Berlin, GERMANY
+00 800 2676 4641 · FAX: +49 30 5303 2335 · www.corning.com/opcomm/emea

Corning Optical Communications reserves the right to improve, enhance, and modify the features and specifications of Corning Optical Communications products without prior notification. A complete listing of the trademarks of Corning Optical Communications is available at www.corning.com/opcomm/ trademarks. All other trademarks are the properties of their respective owners. Corning Optical Communications is ISO 9001 certified.

© 2017, 2018 Corning Optical Communications. All rights reserved. CRR-699-A4-BEN / September 2018